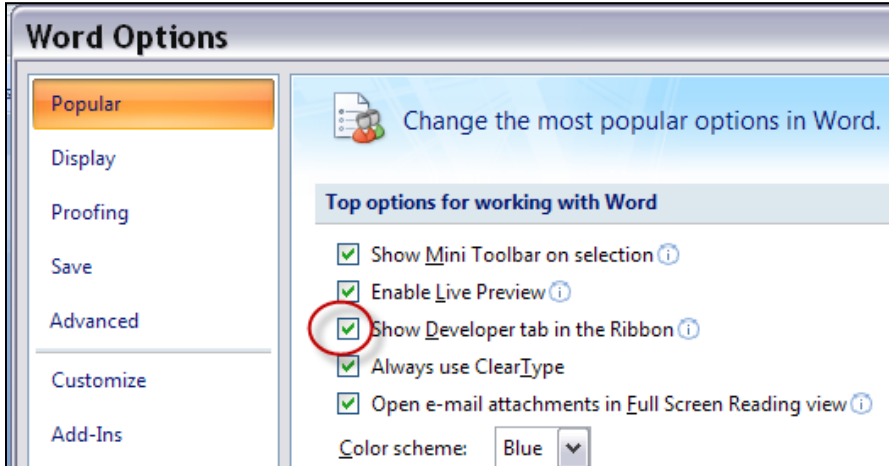
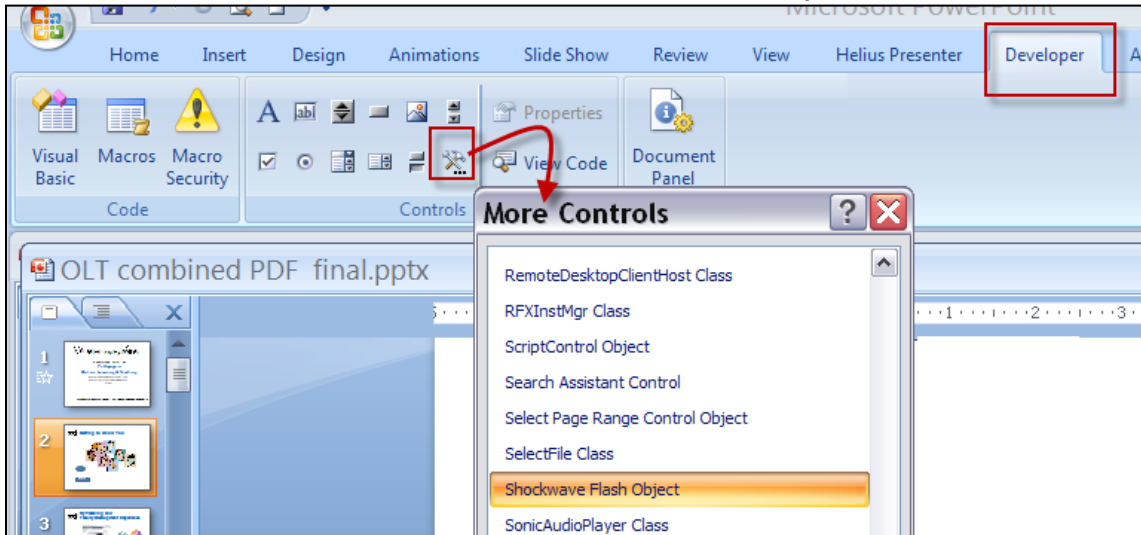


## How to embed a YouTube movie in your PowerPoint slide

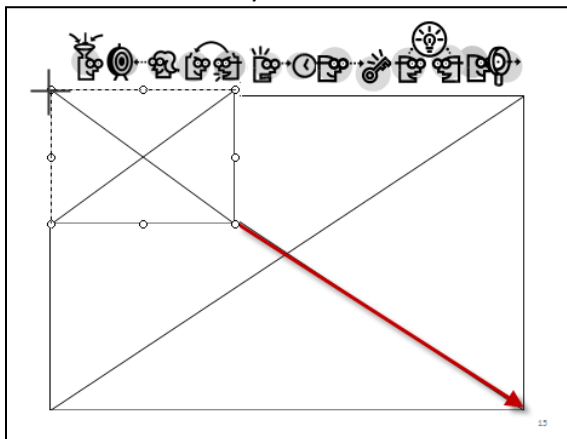
1. In a new slide, go to the Ribbon and select the **Developer** tab. (If you do not see it, click on the **Office** button at the upper right and select **Words Options** at the lower left to open the Word Options window. Check the box for **Show Developer tab in the Ribbon** on the first page of **Popular**.)



2. In the **Developer Ribbon**, select the **More Controls** icon in the **Controls** group. The More Controls window pops up.
3. In the **More Controls** window, scroll down to “**Shockwave Flash Object**”. Click **OK**.



4. A **crosshair** cursor appears. With this new cursor, click on your slide and drag down diagonally to create a window for your movie.



5. Right click on this window and the options list appears. Select **Properties** from the list. The Properties window appears with a table of attributes.
6. In the row for **"Movie"** in this table, insert the URL of your YouTube movie.
7. Modify the code of your URL by
  - a. Deleting "watch?", and
  - b. Replacing the "=" symbols with the "/" symbols

In the Movie row, copy and paste the URL of the Youtube movie.

Menu	True
Movie	http://www.youtube.com/watch?v=qQqiQfsYVA8&feature=rec_index
MovieData	
Playing	True
Profile	False
ProfileAddress	
ProfilePort	0
Quality	1
Quality2	High
SAlign	
Scale	ShowAll

Annotations: A yellow box labeled "Delete 'watch?'" points to the "watch?" part of the URL. A blue box labeled "Replace '=' with '/'" points to the equals signs in the URL. A red arrow points from the original URL to the modified URL below.

Loop	true
Menu	True
Movie	http://www.youtube.com/v/qQqiQfsYVA8&feature/grec_index
MovieData	
Playing	False

8. Close the **Properties** window to return to your slide. You cannot see the movie until you are in SlideShow mode.
9. Go to the **Slideshow** mode. The empty movie window is replaced with the YouTube movie's default screen. Click on the **Play** button in the movie. Movie starts playing in your slide. If you do not see the movie screen or movie, most likely you are experiencing disconnection from the Internet.