

**San Jose State University  
University Computing Systems  
CA E-Trust Antivirus  
Manual Installation & Configuration Instructions**



**eTrust Manual Installation & Configuration Instructions**

**Created: August 16<sup>th</sup>, 2005**

Prepared by  
Victor Van Leer  
University Computing Systems

# San Jose State University CA E-Trust Antivirus Manual Installation & Configuration Instructions

## Overview:

This document provides the recommended settings for campus computers using the CA eTrust Antivirus software. This document is intended for campus desktop support technicians. You may wish to customize the installation based on your department's needs.

The E-Trust Antivirus software described in this document for use on San Jose State University owned computer equipment. The antivirus software was provided to SJSU campus technicians. Department IT heads should contact UCAT if they do not have the software.

This campus version of the antivirus software is available to staff and faculty for use on SJSU owned computer equipment. The campus version has additional features and allows for easier management of large installations. The campus version is available without additional cost to SJSU departments.

**Note:** these instructions cover the use of antivirus software on **state owned equipment**. There is another software package available for home use by SJSU staff, faculty and students. Contact the University Help Desk for the "home use antivirus" software.

## Installing the Anti-Virus Software:

**Note:** University Computing Systems has an anti-virus policy server in production. You can point your clients to that machine as the AV server and it will ensure that your computers are set to receive frequent updates and scans.

You must both install and then configure the antivirus software. To install the antivirus software, run the setup program on the installation CD or perform a remote installation.

## Configuring the Antivirus Settings:

This antivirus software, like most, does not default to vigorous scanning and protection options. It is **strongly recommended** that you configure the software to settings similar to the settings suggested below.

Open the eTrust Antivirus window by using the **right** mouse button to click on the “eTrust AV” icon in the System Tray in Windows and choose “Launch eTrust Antivirus”

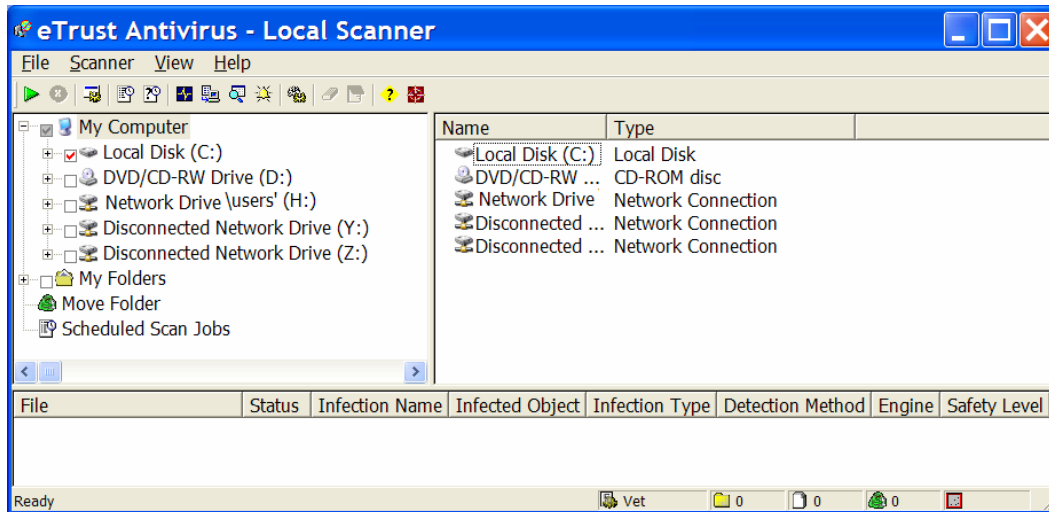
**Hint:**

The Windows System Tray icon for My eTrust Anti-Virus (version for personal machines) looks like this:

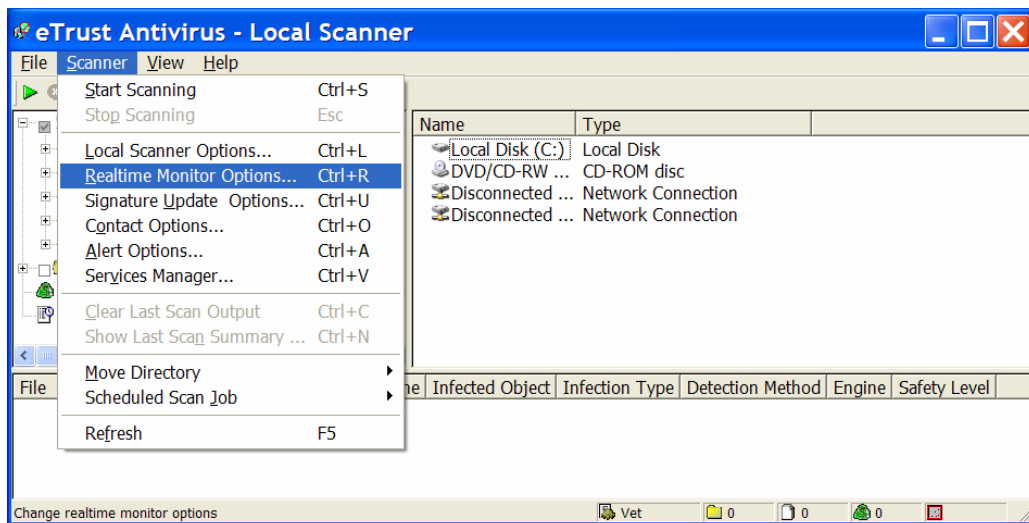


(Icon is a blue square that may contain an animated yellow dot)

After right-clicking on icon and choosing "Launch eTrust Antivirus" you will see this window:

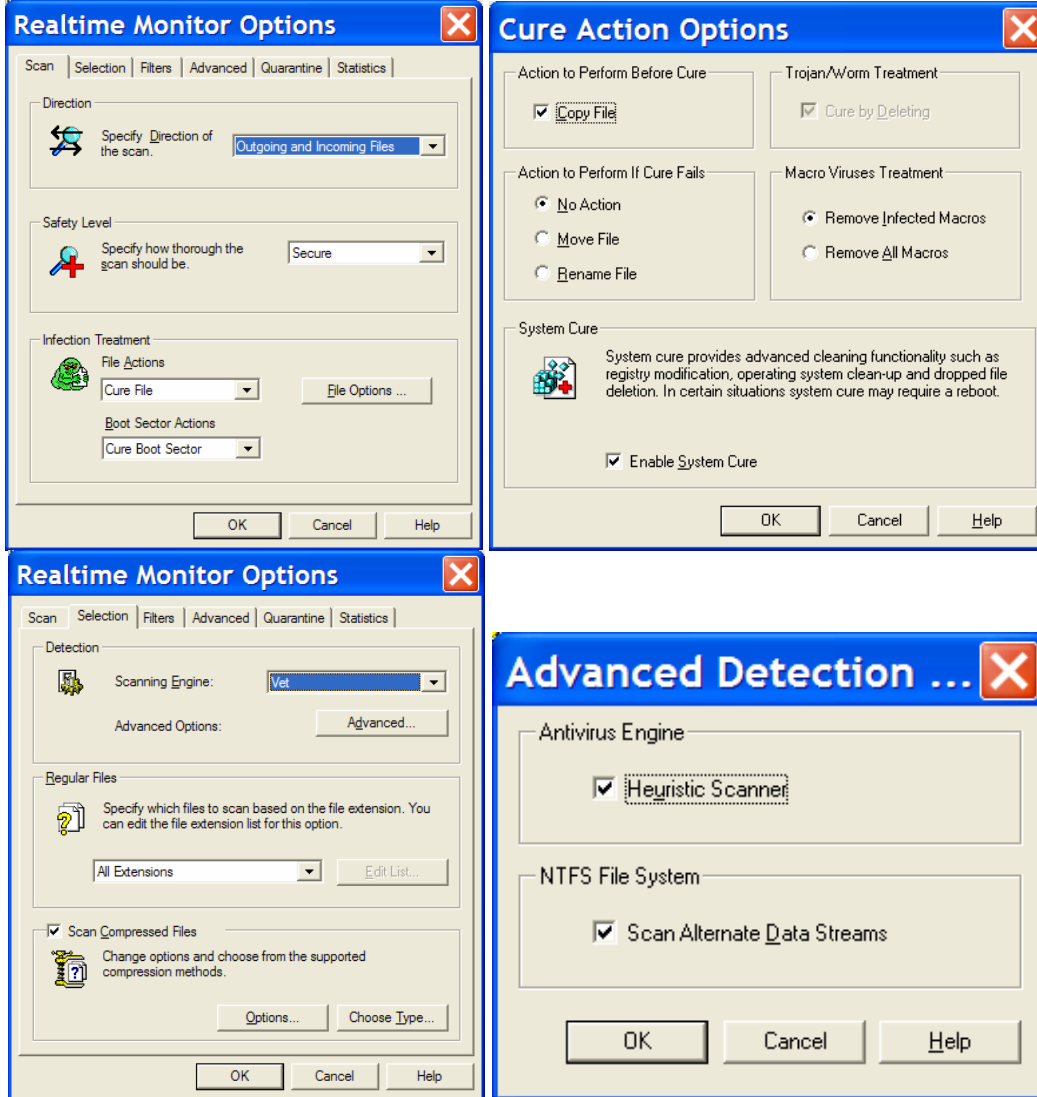


From the menu bar for eTrust, choose “Scanner\RealTime Options” and then the following menu items: Realtime Protection, Program Options, and Scheduled Scan. The settings for each window are supplied below.



**Realtime Protection Options:**

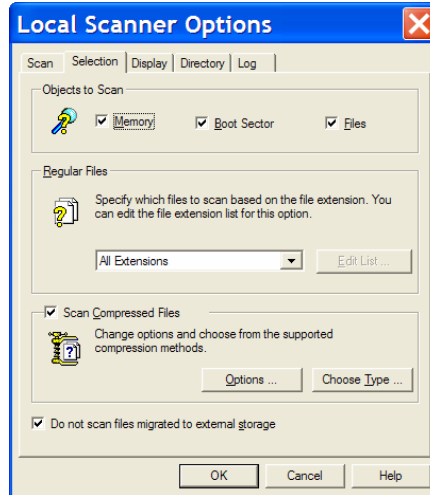
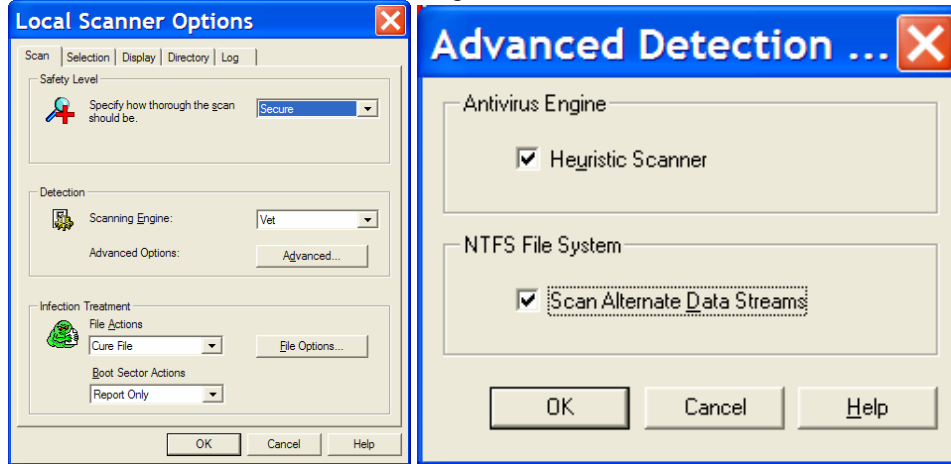
University Computing recommends that you make sure your computers have the same settings as shown below:



**Note:** Heuristic scanning provides additional defense against unknown viruses. Heuristic Scanning can slightly slow down a CPU starved computer. Modern computers should have no noticeable impact with this setting.

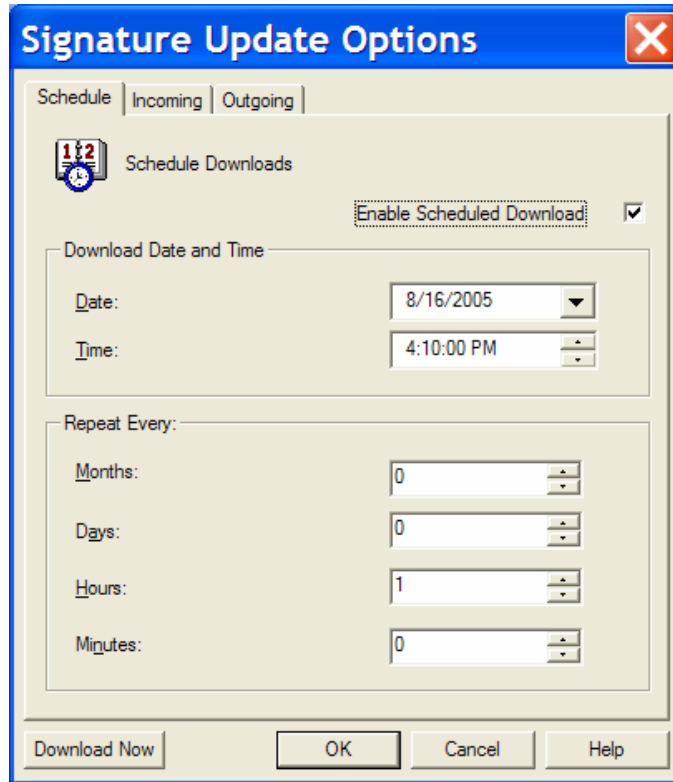
### ***Local Scanner Options:***

Make sure your computer has the same settings as shown below:



### ***Signature Update Options***

**Important:** Make sure your computers download frequent antivirus definition updates:

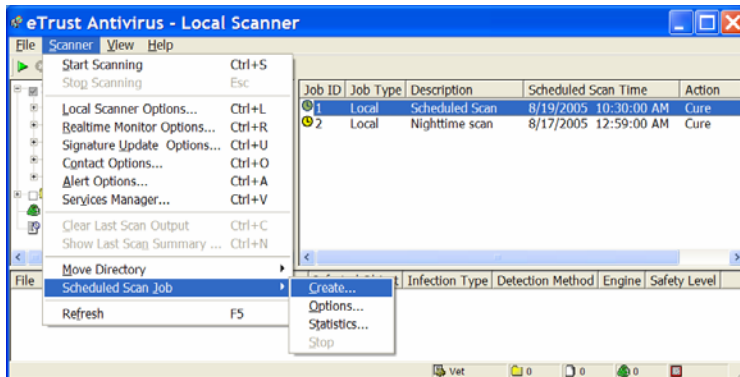


**Scheduled Scan:**

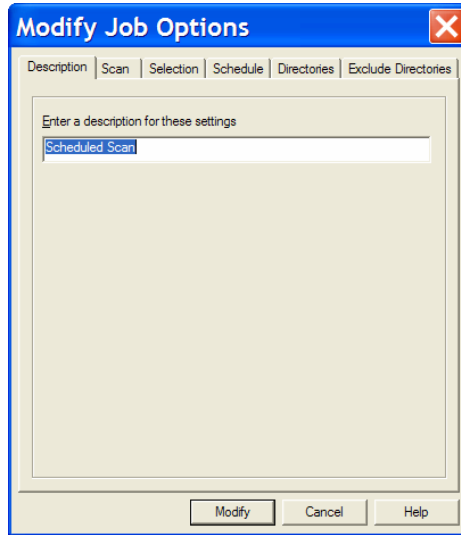
Please scan your machine frequently. Set the software to scan during times when your computer is on. If your machine is on at night, you may wish to scan at midnight. Otherwise, you should scan at noon or some other time when your machine is on.

**Creating a Scheduled Scan:**

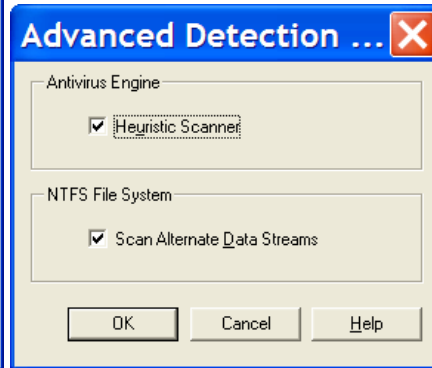
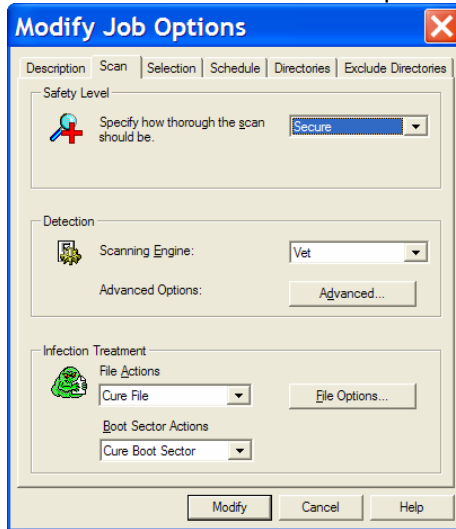
Choose “Scanner\Scheduled Scan Jobs\Create...”

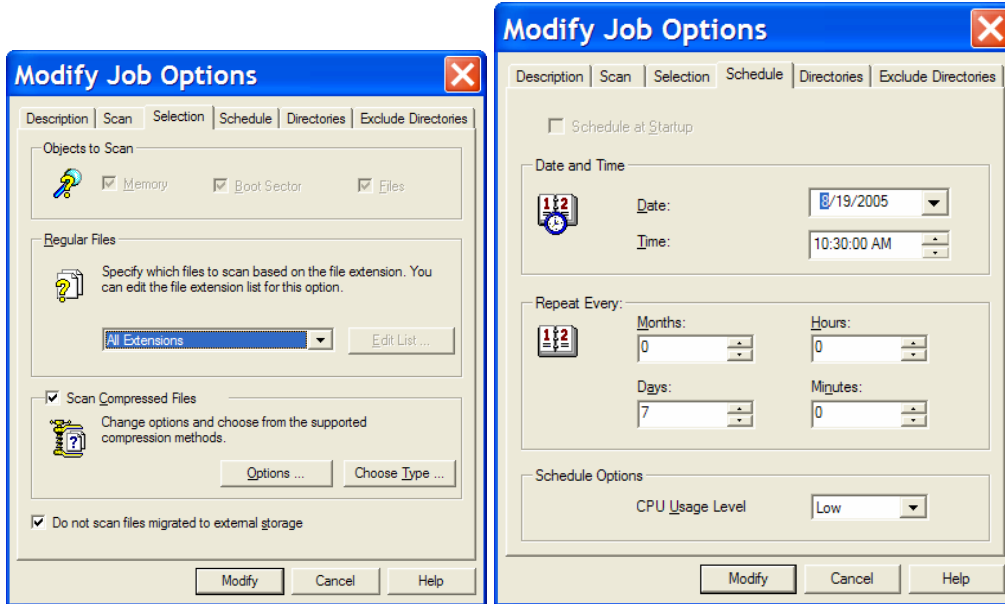


Enter a name for the scheduled scan.

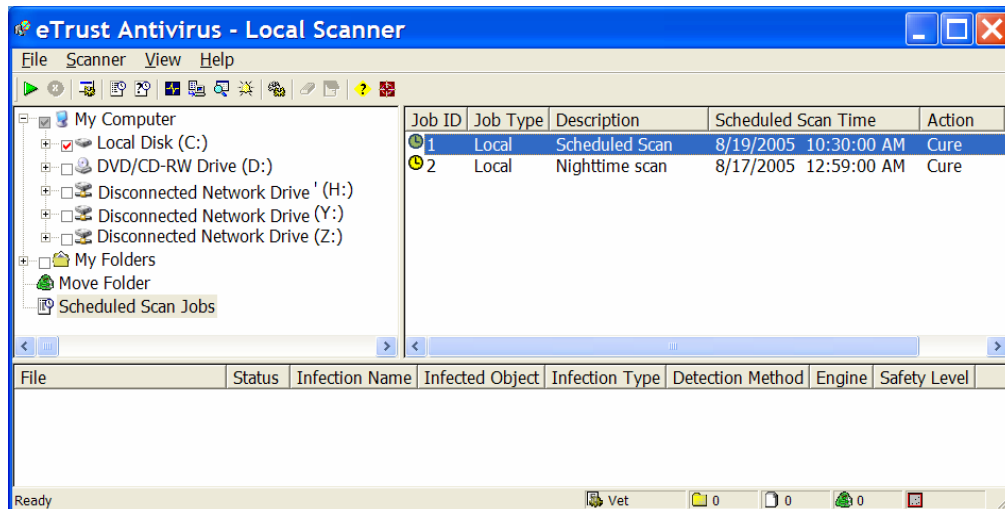


Set the rest of the tabs in to match the samples below.





When you've created a scheduled scan, it will appear in the window on the right (highlighted)



The settings above ensure that your machine frequently receives the latest antivirus definition updates and will scan the computer for viruses. These settings also enable your machine to scan a file for viruses when you access the file. This last setting is useful when you receive files from unknown sources such as the Internet.

### Which Version of Anti-Virus is on the Machine:

The Windows tray icon for My eTrust Anti-Virus (version for personal machines):



(Icon reads "EZ AV.")

The above icon is for the version you download from the web and install on home

PCs or non-state-owned machines.

The Windows tray icon for eTrust Anti-Virus the SJSU owned machines looks like this:



The icon above is for the version that campus IT installs on SJSU owned PCs.

## **Congratulations**

Congratulations. You have downloaded, installed and configured your anti-virus software for optimum performance.

New viruses appear without warning and the anti-virus companies are constantly updating their defenses. The settings above will help ensure that your machine is well protected from current and future attacks.