

FALL 2015
Steps to **Admission**
NON-RESIDENTS OF CALIFORNIA

SAN JOSÉ STATE UNIVERSITY *powering* SILICON VALLEY



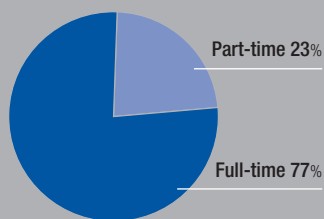


GENDER

♀ 51%
FEMALE

♂ 49%
MALE

ENROLLMENT STATUS



DEGREES AWARDED 2012/2013

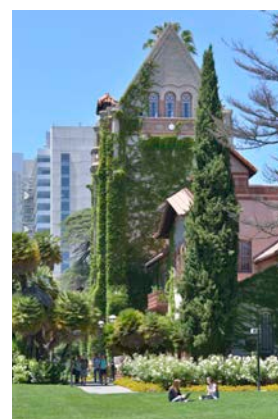
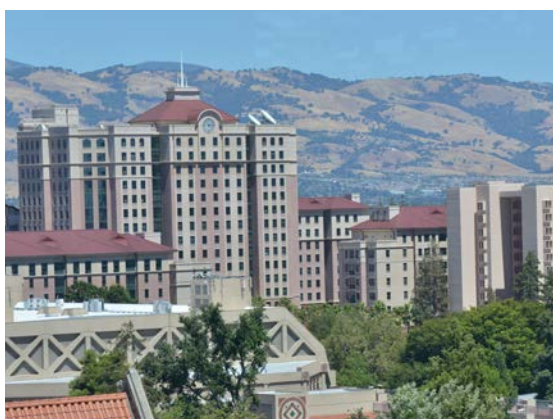
5,206
BACHELOR'S

2,351
MASTER'S

AVERAGE YEARS TO COMPLETE DEGREE 2012/2013

4.27
BACHELOR'S

2.59
MASTER'S



SJSU Points of Pride

- 1 As a Spartan, you get the best Silicon Valley has to offer, while having fun nearby in the **Pacific Ocean, Yosemite National Park and San Francisco.**
- 2 Distinguished SJSU alumni include actors **Coby Bell** and **Omar Benson Miller**, author **Amy Tan**, Oracle co-founder **Ed Oates** and former NFL coaches **Dick Vermeil** and **Bill Walsh.**
- 3 **SJSU is the top supplier of education, engineering, computer science, and business graduates** to Silicon Valley, the world's high-tech capital.
- 4 Our Charles W. Davidson College of Engineering was **ranked second** last year by U.S. News & World Report among bachelor's and master's degree-granting public engineering programs in the West.
- 5 Our School of Journalism and Mass Communication was one of only two California universities ranked among the **top 50 nationally** last year by U.S. News & World Report.
- 6 SJSU received more than **52,000 applications** from prospective students for fall 2013, setting a new SJSU record.
- 7 Among your fellow Spartans are 2,000 new and returning **international students** enrolled for fall 2013.
- 8 Go Spartans! SJSU student-athletes set an all-time **record high grade point average (GPA)** for the fourth year in a row (58 percent earned a 3.0 GPA or higher).
- 9 While you study here, you can take **online courses** for credit from other California State University campuses.
- 10 You'll soon enjoy an expanded **Student Union** and **Spartan Complex**, and a new **Student Health and Counseling Center.**
- 11 Spartans are **leaders in sustainability** with our comprehensive recycling program, bike and car share programs, and new buildings in progress designed to meet LEED standards.

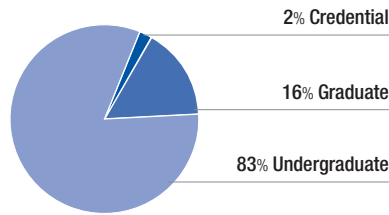
SJSU Overview

The founding **California State University (CSU)** campus, San José State University (SJSU) provides a comprehensive university education, granting bachelor's and master's degrees in 134 areas of study with 110 concentrations.

As of Fall 2013:

STUDENT BODY

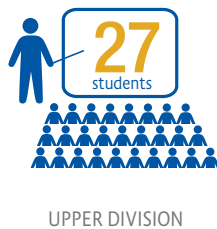
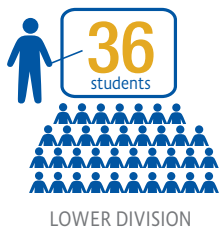
31,278



STUDENT TO FACULTY RATIO



AVERAGE CLASS SIZE



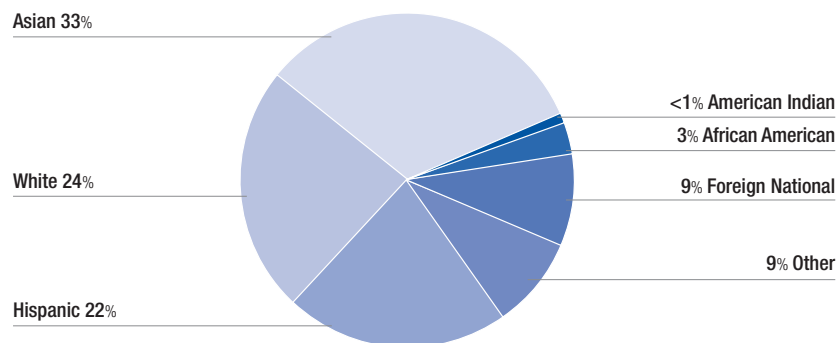
HOUSING



3,649
UNIVERSITY HOUSING

27,629
OFF CAMPUS HOUSING

RACE/ETHNICITY



WHERE DO SJSU STUDENTS CALL HOME?

14,046

SANTA CLARA COUNTY

14,762

OTHER CALIFORNIA COUNTIES

289

OUTSIDE CALIFORNIA

2,181

OUTSIDE THE U.S.

Contacts

For a complete campus directory of faculty, staff and departments, visit sjsu.edu/directory

Admission

sjsu.edu/admissions
admissions@sjsu.edu
408-283-7500

Admission Counseling

outreach@sjsu.edu
408-924-2564

Athletics

sjsuspartans.com

Bookstore

spartanbookstore.com
408-924-1800

Financial Aid and Scholarship Office

sjsu.edu/faso
fao@sjsu.edu
408-283-7500

Housing

<http://housing.sjsu.edu>
uhs-frontdesk@sjsu.edu
408-795-5600

International House (I-House)

sjsu.edu/ihouse
ihouse@sjsu.edu
408-924-6570

Outreach

sjsu.edu/soar
outreach@sjsu.edu
408-924-2564

Parking

Purchase parking permits online only
sjsu.edu/parking

Parent Information

sjsu.edu/advising/for_parents

Tours of SJSU

youvisit.com/tour/sjsu (virtual tour of campus)
sjsu.edu/soar
outreach@sjsu.edu
408-924-2786

Transfer Planning

<http://transfer.sjsu.edu>

Veterans


sjsu.edu/veterans
408-924-6299


Accessibility

All San José State classes are wheelchair accessible. If you have other needs regarding accommodations, please contact the Accessible Education Center at 408-924-6000 voice/408-924-5990 TTY or aec-info@sjsu.edu.

Have a general admissions question?

 Post it in the comments on facebook.com/SJSUEnrollment

 Tweet your question to [@SJSU_ES](https://twitter.com/SJSU_ES) on Twitter

 Follow Enrollment Services on Instagram [@SJSU_ES](https://www.instagram.com/SJSU_ES)

Admission Checklist

Important Dates & Deadlines

- Application Period and Deadline**
WEDNESDAY, OCTOBER 1–
SUNDAY, NOVEMBER 30, 2014
- EOP (Educational Opportunity Program) Application Deadline**
MONDAY, DECEMBER 15, 2014
- Application Fee/Fee Waiver Form**
MONDAY, DECEMBER 22, 2014
- ACT/SAT official scores (Freshmen Only)**
MONDAY, DECEMBER 22, 2014
- Petition for Re-Admission as a Former Student Returning (FSR) Deadline**
THURSDAY, JANUARY 15, 2015
- EOP (Educational Opportunity Program) Documents Deadline**
SUNDAY, FEBRUARY 1, 2015
- Financial Aid Priority Deadline**
MONDAY, MARCH 2, 2015
- Work in Progress (Partial) Transcript Deadline (Transfer Only)**
SUNDAY, MARCH 1, 2015–
FRIDAY, MAY 1, 2015
- Intent to Enroll Deadline (Sign up for Orientation)**
FRIDAY, MAY 1, 2015
- Freshman Housing Requirement/ Priority Application Deadline**
FRIDAY, MAY 1, 2015
- English (EPT) and Math (ELM) Placement Tests– Last Day to Take Tests (Freshmen Only)**
SATURDAY, MAY 2, 2015
- Complete Admission Requirements**
END OF SPRING 2015
- Final Transcripts Deadline**
POSTMARKED BY WEDNESDAY,
JULY 15, 2015

Virtual Campus Tour

To get a feel for SJSU's campus and what it has to offer take a virtual tour at youvisit.com/tour/sjsu

How to Apply

Use your full, legal name consistently on every application and every document you submit. This includes financial aid forms, transcripts and test scores. Avoid using nicknames as this will lead to delays in application processing and admission notification. If you allow someone other than yourself to fill out the application, you are still accountable and responsible for meeting all requests for information and deadlines.

Apply to SJSU at csumentor.edu

Fall 2015 Semester: Wednesday, October 1 – Sunday, November 30, 2014 (11:59 p.m.)

THERE ARE NO EXCEPTIONS TO THE APPLICATION DEADLINE(S).

You will receive an application confirmation number: this is your receipt. Keep this number in a safe place; it is your proof that you submitted the application by the deadline.

Once you have applied, look for a message regarding activating your MySJSU account.

Choose Your Major Carefully

You cannot change your major during the admission process. Once you are admitted, your mandatory orientation, advising, and registration will all be based on your choice of major. After you are admitted, change of major is never guaranteed and is by petition only. You must also enter an alternative major on your application to SJSU. We will use this information for advising purposes only, and will not consider your alternative major in the admission process. Transfer students may not apply as an undeclared major.

Meeting Minimum Requirements

Admission to San José State is competitive in all majors. SJSU continues to have more qualified applicants than available new student spaces. Due to this shortfall, meeting the minimum CSU requirements does not guarantee admission to SJSU. San José State gives preference in the impaction process to "local" applicants. For freshmen, you are a "local" applicant if you will graduate from a high school in Santa Clara County. For transfers, you are a "local" applicant if you will earn the majority of your transferrable units at a college located in Santa Clara or Santa Cruz counties.

Learn more about impaction at <http://info.sjsu.edu/static/admission/impaction.html>

Jake Arnstein(Left)
Undeclared

Stephen Suh
Business Administration



SOAR-ADNR-0914-4K-V1

PORTRAITS BY: Sharon Hall Photography

Freshman Admission Requirements

1 Earn a high school diploma, or equivalent

2 Complete the required high school courses with grades of "C-" or better

All required high school courses must be completed by the end of the spring semester prior to fall admission. We will deny admission for missing or receiving failing grades in any of these courses. Print your high school transcript now and verify that you will graduate with grades of C- or better in courses approved to meet the admission requirements listed below.

<input type="checkbox"/> a. History/Social Science	2 years required	One year of world history and one year of U.S. history or U.S. history/U.S. government
<input type="checkbox"/> b. English	4 years required	Composition and literature
<input type="checkbox"/> c. Mathematics	3 years required (4 years recommended)	Algebra, geometry, intermediate algebra; or integrated mathematics
<input type="checkbox"/> d. Laboratory Science	2 years required (3 years recommended)	One year of biological science and one year of physical science; both with lab
<input type="checkbox"/> e. Language other than English	2 years required	Study in the same language
<input type="checkbox"/> f. Visual and Performing Arts	1 year required	Select a year-long course from art, theatre/drama, music or dance.
<input type="checkbox"/> g. Elective	1 year required	Select from areas a–f (above) or from other approved college prep "A–C" courses.

3 Submit SAT or ACT test scores by Monday, December 22, 2014

Freshman applicants are required to submit SAT (critical reading and math) or ACT composite scores from a test taken no later than November 2014. (The SAT institution code for CSUMentor is 3594.)

No exceptions! Submit your official scores by the deadline. Failure to do so will result in your application being withdrawn. Request to have your official scores sent from the testing agency. Listing your scores on your application will not satisfy this deadline. Please note: The SAT/ACT writing portion is not used for admission or placement purposes at SJSU.

4 Meet or exceed the Minimum Eligibility Index (combination of Grade Point Average and SAT/ACT scores)

Your admission to SJSU is based on a combination of the grades you earned in the approved courses (listed in step 2) during your sophomore and junior years and your official SAT/ACT scores. This combined score (eligibility index) is used to determine whether or not you will be admitted to SJSU.

Minimum Eligibility Index (EI)

Nonresidents who graduate from a high school outside of California must have a minimum eligibility index of 3502 using the SAT or 842 using the ACT. The CSU eligibility index is calculated by using either the SAT or ACT as follows:

SAT (sum of scores in mathematics and critical reading) + (800 x high school Grade Point Average)

-or-

(10 x ACT composite score without the writing score) + (200 x high school Grade Point Average)

AVERAGE SCORES

 **1037** CR
MATH

 **22** COMP

 **3.31**

Non-Discrimination Policy

San José State University does not discriminate on the basis of accent, age, ancestry, citizenship status, color, creed, disability, ethnicity, gender, marital status, medical condition, national origin, race, religion or lack thereof, sex, sexual orientation, transgender, genetics or veteran's status. This policy applies to all SJSU students, faculty and staff programs and activities. Questions regarding this policy should be directed to the director of the Office for Equal Opportunity, 408-924-2250.

Learn more at sjsu.edu/hr/about_us/hr_directory/eo_unit/title_ix/

Transfer Admission Requirements

1 Earn Enough Units to Reach Junior Status (upper division transfer)

No college freshmen, sophomores, or applicants seeking a second bachelor's degree (except for those entering the nursing program) will be admitted.

2 Meet the Following Criteria by the end of the Spring 2015 term

- Complete 60 or more transferable semester units or 90 or more quarter units.
- Earn a college grade point average of 2.00 or better in all transferable courses.
- Be in good standing at the last college or university attended.
- Complete 30 semester units (45 quarter units) of general education, including four basic skills courses:
 - 1. One course in oral communication
 - 2. One course in written composition
 - 3. One course in critical thinking
 - 4. One course in college-level mathematics or quantitative reasoning, with intermediate algebra as a prerequisite

AVERAGE SCORE

 **3.13**

Complete your four basic skills courses as early as possible. The four basic skills courses and 60 transferable semester units (90 quarter units) must be completed by the end of the spring semester to be eligible for admission to the fall term. You must earn a "C" or better grade in each basic skills course. You will not be allowed to register until we have a transcript showing that you have passed the four basic skills courses.

Costs

Estimated Cost of Attendance for the academic year for non-residents of California:

	SJSU	UC (Average)	Local Private (Average)
*Tuition & Fees	\$16,252	\$36,270	\$43,812
Campus Housing	\$11,810	\$14,412	\$12,921
Total	\$28,062	\$50,682	\$56,733

* Amounts are based on full-time attendance (12 units per semester) for a 9-month academic year. More detailed information about fees can be found at sjsu.edu/bursar

Fees Are Subject to Change

The CSU makes every effort to keep student costs to a minimum. Fees listed in published schedules or student accounts may need to be increased when public funding is inadequate. Therefore, CSU must reserve the right, even after initial fee payments are made, to increase or modify any listed fees, without notice, until the date when instruction for a particular semester or quarter has begun. All CSU listed fees should be regarded as estimates that are subject to change upon approval by The Board of Trustees.

Financial Aid

Free Application for Federal Student Aid (FAFSA)

The Free Application for Federal Student Aid (FAFSA) is used to apply for financial aid to help cover the cost of attending SJSU. Apply by the Monday, March 2, 2015 priority filing deadline for Fall 2015. Applications are still accepted after March 2; however, funding for many programs is limited so you are encouraged to apply as early as possible.

Students who apply for financial aid through the FAFSA will view a personalized Student Aid Report online. Print this report for your records. The Financial Aid Office will post requests on your MySJSU account for the documents required to complete your file in order to determine your financial aid eligibility. It takes about two weeks to respond to your initial application and three to four months to complete the entire process. The FAFSA form asks for SJSU's six-digit code, which is 001155. The form is available Thursday, January 1, 2015 at fafsa.ed.gov

To learn more, visit sjsu.edu/faso



22,667

THE NUMBER OF STUDENTS
WHO RECEIVED FINANCIAL AID
FOR THE 2013-14 SCHOOL YEAR

Housing

Housing Options	Description	Rent	Meal Plan	Included in Rent	Contact
Campus Village Apartments – Building B “CVB”	High Rise: studios, three, four and five-bedroom units typically for transfers	\$13,302	5-day included in rent 7-day meal plan available	Internet, Basic Utilities & Cable	housing.sjsu.edu UHS-frontdesk@sjsu.edu 408-795-5600
Campus Village Suites – Building C “CVC”	High Rise: four-bedroom units typically for freshmen	\$13,336	5-day included in rent 7-day meal plan available	Internet, Basic Utilities & Cable	
Washburn, Hoover & Royce Halls “The Bricks” “The Classics”	Three-Story Building: traditional dorm typically for freshmen	\$11,476	5-day included in rent 7-day meal plan available	Internet, Basic Utilities & Cable	
Joe West Hall “The Classics”	High Rise: traditional dorm typically for freshmen	\$11,476	5-day included in rent 7-day meal plan available	Internet, Basic Utilities & Cable	
International House “I-House”	Large residence near campus with 70 U.S. and International students	\$13,386	5-day included in rent 7-day meal plan available	Internet, Basic Utilities & Cable	sjsu.edu/ihouse ihouse@sjsu.edu 408-924-6570

*Rent amounts are subject to change and are based on double occupancy, furnished units with a 10-month contract.

**Meal plans are required for all freshmen living in University Housing or the International House (I-House).

University Housing Services

Within the residence halls, we offer a variety of communities to bring students together who have similar interests. Programming is designed around student interests and often has a component tied to a SJSU academic department. Some previous Living Learning Communities include: Arts Village, Substance Free and Healthy Living, Service Learning, Science & Technology, Multicultural Living, and Social Justice. Students who live on campus have the opportunity to get involved in social gatherings, cultural events, intramural sports, community service, and a wide range of other campus activities.

International House

The International House is a co-ed residence for 70 U.S. and international students attending San José State. SJSU I-House is located nearby campus and is a large comfortable home featuring friendly interaction among students of many cultures. Residents represent approximately 25 countries. I-House offers a one-semester contract and stays open year-round with per diem rates during summer and winter breaks. Students interested in living in the I-House must send a separate application directly to the I-House. Applications are available at sjsu.edu/ihouse

Freshman Housing Requirement

Freshmen who graduate from a high school located in a city outside a 30-mile radius of campus are required to live on campus their first year. Appeals for exceptions to the housing requirement will be reviewed after admission. The sooner you submit your completed license agreement and initial payment, the greater your chance of receiving your hall preference. Residence in University Housing or the International House (I-House) satisfies the freshman on-campus housing requirement.

Financial Aid and Housing

If you plan to live on campus and will need financial assistance to do so, you should apply for financial aid prior to the March 2 priority application deadline.



Lindsay Sommers
Psychology

California Overview



San José

- The Tech Museum of Innovation
- Santana Row
- Center for the Performing Arts
- San Pedro Square Market



San Francisco

- 48 miles north
- Fisherman's Wharf
- Pier 39
- Golden Gate Park
- Alcatraz Island



Santa Cruz

- 32 miles south
- Santa Cruz Beach Boardwalk
- Natural Bridges State Beach
- West Cliff Drive



Monterey Bay/ Carmel

- 71 miles south
- Pebble Beach Resorts
- Monterey Bay Aquarium
- Cannery Row
- 17- Mile Drive



Los Angeles

- 339 miles south
- Universal Studios Hollywood
- Disneyland
- The Getty Center
- Malibu

Top Hiring Employers of SJSU Students

SJSU powers the Silicon Valley economy, contributing more than 7,000 graduates annually to its work force.

We are immensely proud of the accomplishments of our 220,000 alumni, 60 percent of whom live and work in the San Francisco Bay Area.

- | | | | |
|--|----------------------------------|-----------------------------|----------------------------|
| Aerotek | Deloitte LLP | Juniper Networks | PricewaterhouseCoopers LLP |
| Altera Corporation | eBay Inc. | Kaiser Permanente | Qualcomm Incorporated |
| Anritsu | EMC Corporation | KPMG LLP | San José State University |
| Apple, Inc. | Ernst & Young LLP | Lam Research | SAP SE |
| AT&T | FireEye, Inc. | Lockheed Martin | ShoreTel |
| Bank of America | Grant Thornton LLP | Marvell Semiconductor, Inc. | Sony |
| Boston Scientific Corporation | Hewlett-Packard | McAfee, Inc. | Symantec |
| Broadcom Corporation | Hitachi Data Systems Corporation | NetApp, Inc. | Target Corporation |
| California State Board of Equalization | IBM | Oracle | Wells Fargo Bank |
| Cisco Systems, Inc. | Intel Corporation | Plantronics | |
| City of San José | Intuit | PMC-Sierra, Inc. | |