

# Landscape, Tourism & Beauty

## Romantic Authors



Claude Lorrain, *Pastoral Landscape with the Arch of Titus*



**J. M. W. Turner, *The Passage of the St. Gothard* (1804).  
Watercolor**

# Rap of Wordsworth's Daffodils

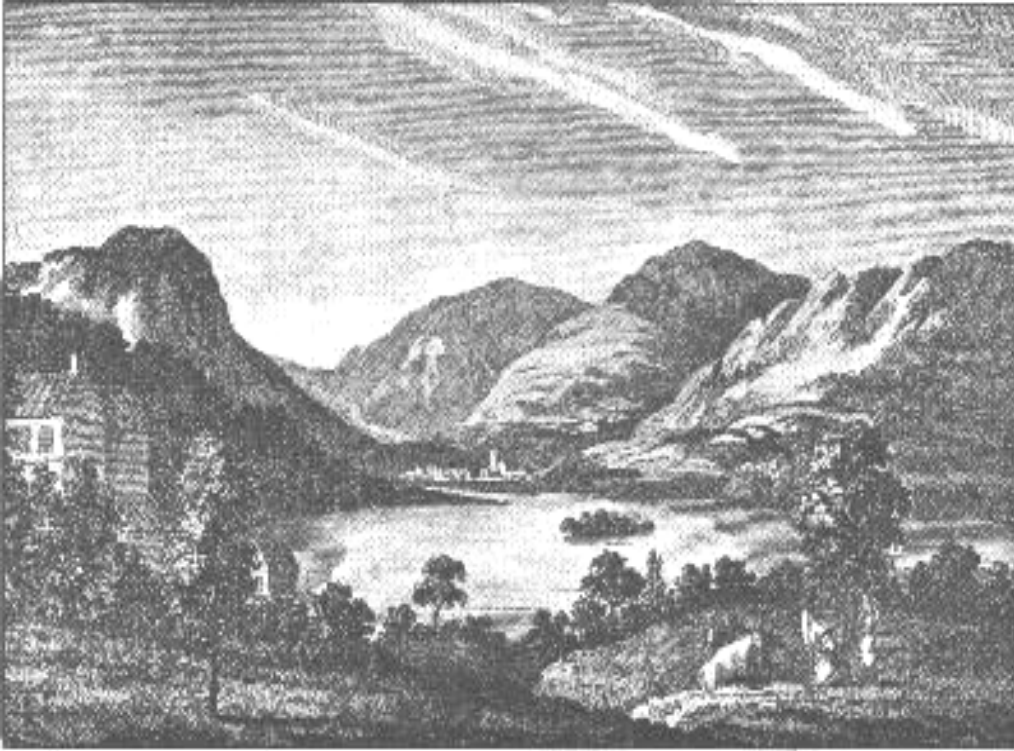
<http://www.golakes.co.uk/wordsworthrap/>





# Tintern Abbey





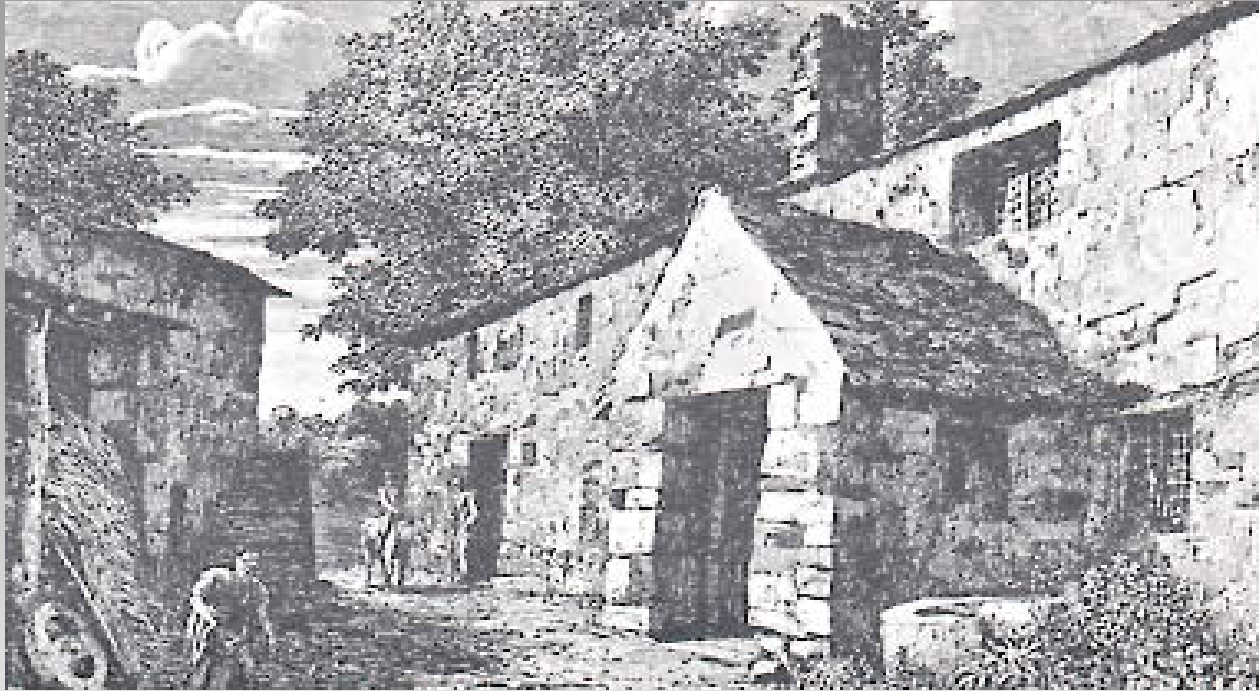
**Francis Towne, *Grasmere from the Rydal Road* (ca. 1787). Pen, brown ink, and watercolor**

**Ernest de Sélincourt, *Grasmere*. From Wordsworth's *Guide to the Lakes*, Fifth Edition (1835)**



See map of Britain here:

<http://www.tate.org.uk/britain/exhibitions/apictureofbritain/map.shtm>



***Cottage at Buttermere***, illustrated by Ernest de Sélincourt (1835). From Wordsworth's *Guide to the Lakes*, Fifth Edition.

## Remnants of Keats in a *New Yorker* cartoon:

“Beauty is Truth, truth Beauty  
Price: \$19.99  
Plus shipping and handling  
That is all ye need to know.”

