

Jane Austen's Critique of Popular Literature	Critiques of Jane Austen's Writing
<ul style="list-style-type: none"> ➤ Heroic (falsely idealized) ➤ Sensationalism ➤ Highly wrought & unnatural emotion ➤ Unlikely meetings between long-lost relatives ➤ Villainous aristocratic would-be ravishers ➤ Perfectly virtuous heroines ➤ Interdependence of spiritual & material values ➤ Critiques in "Plan of a Novel" 	<ul style="list-style-type: none"> ❖ Failure to be instructive, <i>i.e.</i>, to teach a moral ❖ Failure to be inspirational, <i>i.e.</i>, "to elevate mankind by their depiction of ideal persons, even in defiance of the known realities of ordinary life"

Praise for Jane Austen's Writing & *Northanger Abbey*

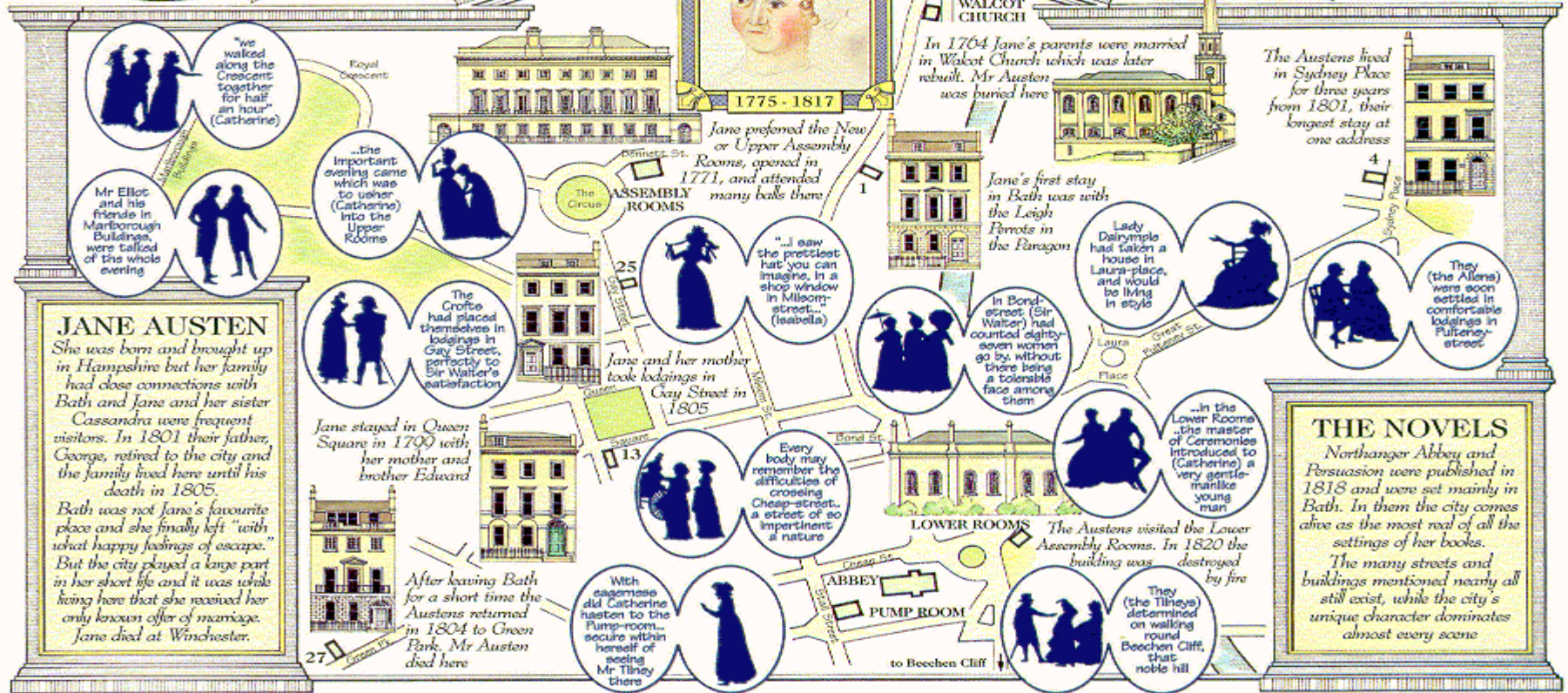
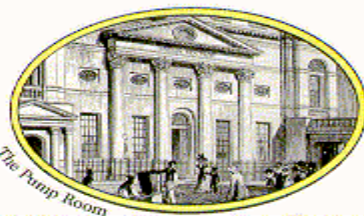
Simple Representations of Common Life

- ❖ Author has no deep interest [no political motivation or social causes?]
- ❖ No uncommon characters in novel
- ❖ No vehement passions displayed by characters or author
- ❖ "...without the slightest strain of imagination" (*Blackwood's Review* 272)
- ❖ Fictions could be in any town or village in England [no more colonialism?]
- ❖ Really about English manners [didactic or marriage plot?]
- ❖ History of common people that readers see [relates to readers]
- ❖ Characters not dull, but lively & interesting [everyday life has its excitement?]

See also chapter on Bath in your Longman Edition (243)

JANE AUSTEN IN BATH

Jane Austen

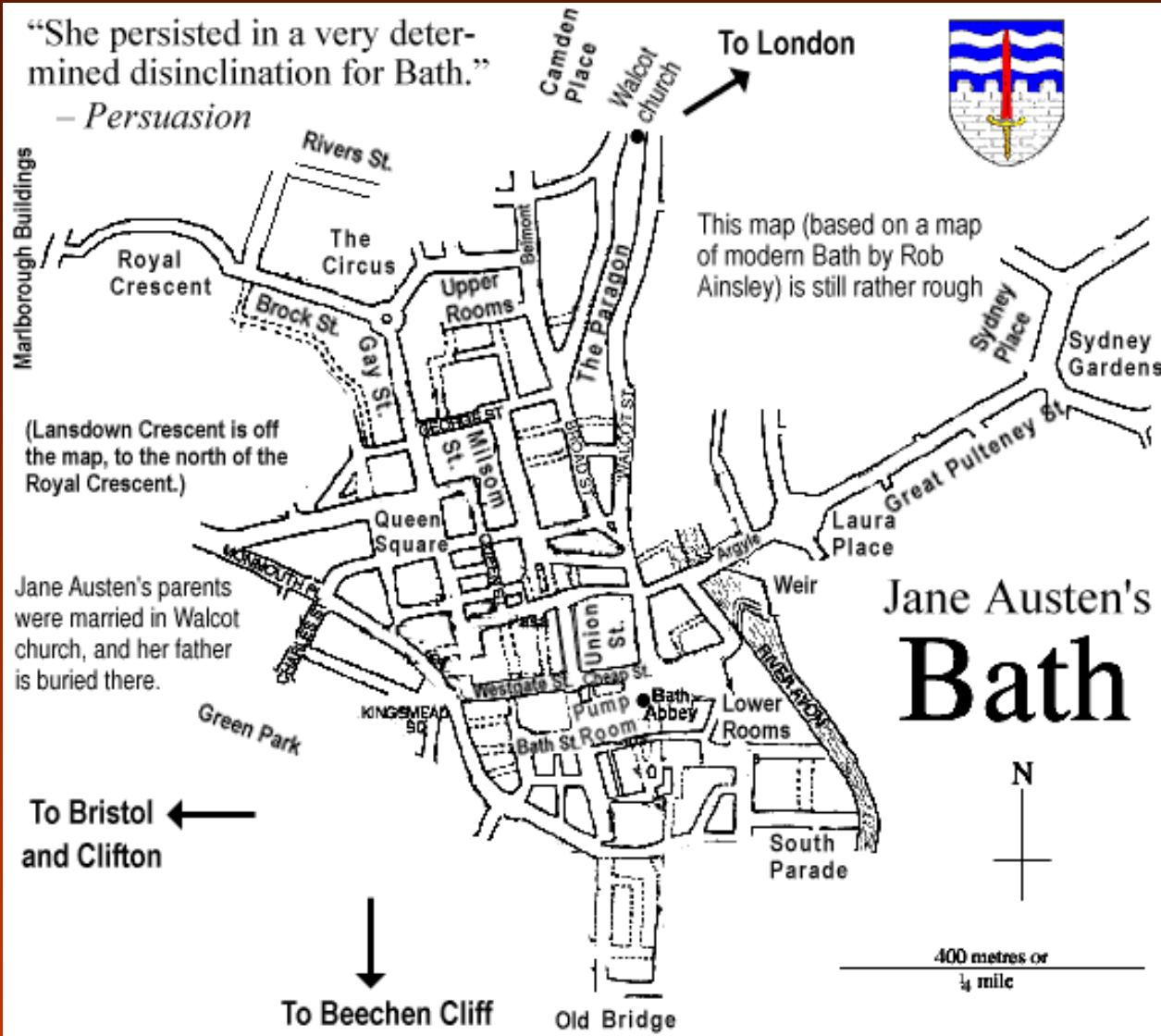


JANE AUSTEN
 She was born and brought up in Hampshire but her family had close connections with Bath and Jane and her sister Cassandra were frequent visitors. In 1801 their father, George, retired to the city and the family lived here until his death in 1805.
 Bath was not Jane's favourite place and she finally left "with what happy feelings of escape." But the city played a large part in her short life and it was while living here that she received her only known offer of marriage. Jane died at Winchester.

THE NOVELS
 Northanger Abbey and Persuasion were published in 1818 and were set mainly in Bath. In them the city comes alive as the most real of all the settings of her books.
 The many streets and buildings mentioned nearly all still exist, while the city's unique character dominates almost every scene

“She persisted in a very determined disinclination for Bath.”

– *Persuasion*



Bath circa 1800

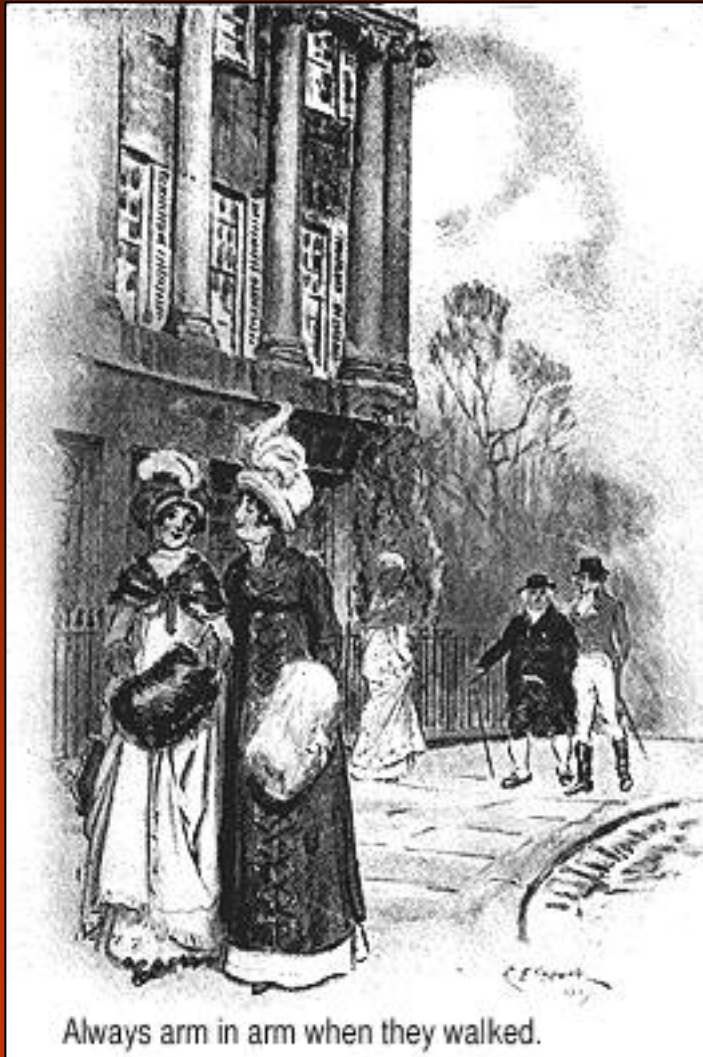
Setting of
Northanger Abbey

From Republic of Pemberley:

<http://www.pemberley.com/janeinfo/bath-map.gif>

1907 Illustrations of *Northanger Abbey*

From
<http://www.pemberley.com/janeinfo/jabrokil.html#northabbey>



This is a genuine Paperback Library Gothic.

A HOLIDAY ENDS AS TERROR BEGINS— STALKING CATHERINE MORLAND FROM EVERY SHADOWY CORNER OF NORTH- ANGER ABBEY!

Delighted to be a house guest at Northanger Abbey—ancestral home of Henry Tilney, the man she loves—Catherine anticipated a time of happiness. Soon, however, the very atmosphere of the old mansion menaced her with strange noises, weird suspicions.

What was the mystery surrounding the death of Henry's mother? Was the family concealing a terrible secret within the elegant rooms of the Abbey?

Could Catherine trust her love? Would Henry tell her the truth or was he, too, involved in the evil of the house—an evil which threatened to enmesh Catherine herself.

**FAR FROM HOME AND CLOSE TO DANGER,
CATHERINE HAS NOWHERE TO TURN!**

1965 USA Cover & Marketing Blurb

Identifies *Northanger Abbey* as a Gothic Novel not a Gothic parody

