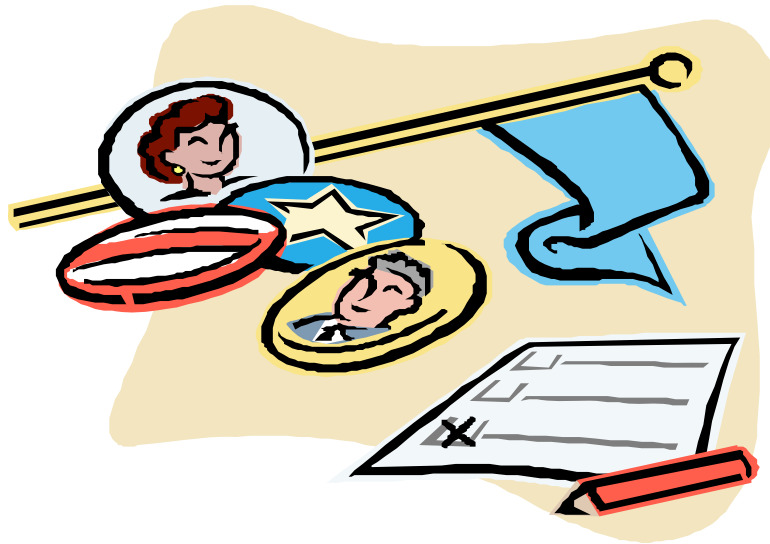


**San José State University
Department of Political Science
POL108, Political Participation, Section 1
Fall 2009**



Instructor: Dr. Melinda Jackson
Office Location: Clark Hall 402C
Telephone: (408) 924-5293
Email: Melinda.Jackson@sjsu.edu (preferred method of contact)
Office Hours: MW 3-5pm, and By Appointment
Class Days/Time: MW 9:00 – 10:15am
Classroom: DMH 161

Faculty Web Page

Copies of the course materials such as the syllabus, major assignment handouts, etc. may be found on my faculty web page accessible from the Political Science department web page.

Course description

In this course we will explore the nature of political participation in America. We will examine the roles of societal influences, the media, political campaigns, and individual voter psychology in shaping patterns of political participation, and how the Internet may be changing this process in important ways.

We will also participate in several “hands on” political activities in and outside of class, including a local survey project.

Finally, we will investigate the importance of civic participation in building social capital and how this helps “make democracy work.” You will come away from this class with a deeper understanding of what political participation means, from both a societal and a personal point of view!

Student Learning Objectives:

- To gain familiarity with political science scholarship on political participation and voting. Students will learn about theories of voter turnout, vote choice, and civic and political engagement through course readings and writing assignments. Students will also test these theories through hands-on exercises in practical politics.
- To develop a critical understanding of the various influences on political participation and vote choice including political socialization and learning, social characteristics, the media, technology, campaigns and elections.
- To develop an understanding of the concept of social capital, and its relationship to political participation and democracy.

Required Texts:

Political Behavior of the American Electorate, 11th Edition (2006), CQ Press
By William H. Flanigan and Nancy H. Zingale (abbreviated F&Z in the course schedule)
W/2007 Midterm Supplement ISBN: 978-0-87289-527-0

Get Out the Vote: How to Increase Voter Turnout, 2nd Edition, Brookings Institution Press, By:
Donald P. Green & Alan S. Gerber ISBN: 978-0-8157-3267-9

Bowling Alone: The Collapse and Revival of American Community (2000), Simon & Schuster, By
Robert D. Putnam ISBN: 978-0-7432-0304-3

All texts available for purchase in the Spartan Bookstore.
Additional readings will be posted electronically on the course website.

Turnitin.com:

All papers for this course must be submitted through www.turnitin.com. In order to have your paper graded and to receive credit you must submit it through turnitin.com.

If you already have a turnitin.com account, simply log in using your e-mail and password. If you have never used turnitin.com you will need to create an account using the New Users selection at the top right of the home page and following the instructions and prompts.

Class ID number: 2810770

Password: fall2009

COURSE REQUIREMENTS

1. Quizzes

There will be weekly quizzes covering the assigned readings, given in class, normally on Wednesdays (any alteration to this schedule will be announced in advance). Quizzes will be multiple choice and true/false, and will be worth 10 points each. *Quizzes will make up 20% of your total grade. THERE ARE NO MAKE-UPS ON QUIZZES.*

2. Exams

There will be two exams in this class – a midterm and a final. Generally speaking, the midterm exam will cover the material learned in the first half of the course, and the final exam will cover the material from the second half of the course. *Each exam will make up 20% of your total grade.*

3. Papers

There will be three short papers in this class. Due dates are listed in the course schedule – more detail about each paper assignment will be given in class. *Each paper is worth 10% of your grade.*

4. Survey Service Learning Project

Students in this class will participate in a hands-on telephone survey service learning project: Students will spend one evening (4:30-8:30pm) in the Survey & Policy Research Institute (SPRI) lab on campus, conducting a telephone survey. You will have a choice of dates on which to complete this project, and we will cancel one regular class session to compensate for this out-of-class required time. Students will then write a short paper reflecting on their experience working on the survey project.

THE SURVEY PROJECT IS A REQUIRED CLASS ACTIVITY – IT IS YOUR RESPONSIBILITY TO SPEAK TO PROF. JACKSON AS SOON AS POSSIBLE ABOUT ANY SCHEDULING DIFFICULTIES. *Survey project participation and the survey reflection paper are each worth 5% of your grade (10% total).*

4. Participation

Class participation – meaning coming to class and engaging in class discussion and activities – *will also count for 10% of your total grade.* So that you have plenty of opportunities to participate, expect to be “mobilized” (i.e., called on by name) in class.

Evaluative Criteria:

Your grade will be calculated as follows. You may use the “my points” column to keep track of your grade in the class.

	Points	My Points	Percentage of total
Quizzes (10 @ 10 points each)	100		20%
Paper #1 – What if everyone voted?	50		10%
Paper #2 – Survey reflection paper	25		5%
Paper #3 – Building social capital	50		10%
Midterm Exam	100		20%
Final Exam	100		20%
Survey project participation	25		5%
Participation	50		10%
Total	500		100%

Final letter grades for the course will be assigned based on the following scale:

A = 92 – 100%	B = 82 – 87%	C = 72 – 77%	D = 62 – 67%
A- = 90 – 91%	B- = 80 – 81%	C- = 70 – 71%	D- = 60 – 61%
B+ = 88 – 89%	C+ = 78 – 79%	D+ = 68 – 69%	F = 59% or less

Accommodations:

If you need course adaptations or accommodations because of a disability, or if you need special arrangements in case the building must be evacuated, please make an appointment with me as soon as possible, or see me during office hours. Presidential Directive 97-03 requires that students with disabilities register with DRC to establish a record of their disability.

Academic Integrity:

Your own commitment to learning, as evidenced by your enrollment at San José State University, and the University’s Academic Integrity Policy requires you to be honest in all your academic course work. Faculty members are required to report all infractions to the Office of Student Conduct and Ethical Development.

The policy on academic integrity can be found at: <http://www2.sjsu.edu/senate/S04-12.pdf>.

The website for the Office of [Student Conduct and Ethical Development](http://www.sa.sjsu.edu/judicial_affairs/index.html) is: http://www.sa.sjsu.edu/judicial_affairs/index.html

Instances of academic dishonesty will not be tolerated. Cheating on exams or plagiarism (presenting the work of another as your own, or the use of another person’s ideas without giving proper credit) will result in a failing grade and sanctions by the University. For this class, all assignments are to be completed by the individual student unless otherwise specified. If you would like to include in your assignment any material you have submitted, or plan to submit for another class, please note that SJSU’s Academic Policy F06-1 requires approval of instructors.

Other Course Policies:

Late papers or assignments will be penalized with lower grades.

No late papers will be accepted after the last day of class.

Missed exams may not be made up unless students are excused in advance.

Medical and family emergencies must be documented.

LATE ARRIVALS, EARLY DEPARTURES AND DISRUPTIONS OF CLASS IN ANY FORM ARE UNACCEPTABLE. CELL PHONES AND OTHER ELECTRONIC EQUIPMENT SHOULD BE TURNED OFF AT ALL TIMES IN THE CLASSROOM.

Other Useful Information:

The **library liaison for Political Science** is available to answer questions and provide one-on-one help learning using the library for research. He is also a very friendly guy and happy to meet with students, so don't be afraid to take advantage of his expertise!

His name and contact info is: Nyle Monday
 Librarian (Political Science Liaison)
 (408) 808-2041
 Nyle.Monday@sjsu.edu

Learning Assistance Resource Center

The Learning Assistance Resource Center (LARC) is located in Room 600 in the Student Services Center. It is designed to assist students in the development of their full academic potential and to motivate them to become self-directed learners. The center provides support services, such as skills assessment, individual or group tutorials, subject advising, learning assistance, summer academic preparation and basic skills development. LARC is an excellent resource if you find yourself needing some extra help with writing or other course skills. [The LARC website is located at http://www.sjsu.edu/larc/](http://www.sjsu.edu/larc/).

SJSU Writing Center

The SJSU Writing Center is located in Room 126 in Clark Hall. It is staffed by professional instructors and upper-division or graduate-level writing specialists from each of the seven SJSU colleges. Our writing specialists have met a rigorous GPA requirement, and they are well trained to assist all students at all levels within all disciplines to become better writers. [The Writing Center website is located at http://www.sjsu.edu/writingcenter/about/staff/](http://www.sjsu.edu/writingcenter/about/staff/).

Peer Mentor Center

The Peer Mentor Center is located on the 1st floor of Clark Hall in the Academic Success Center. The Peer Mentor Center is staffed with Peer Mentors who excel in helping students manage university life, tackling problems that range from academic challenges to interpersonal struggles. On the road to graduation, Peer Mentors are navigators, offering "roadside assistance" to peers who feel a bit lost or simply need help mapping out the locations of campus resources. Peer Mentor services are free and available on a drop –in basis, no reservation required. The Peer Mentor Center website is located at <http://www.sjsu.edu/muse/peermentor/>

POLS108 COURSE SCHEDULE – FALL 2008 <i>Subject to change with fair notice (announced in class or by email)</i>		
DATE	TOPIC	ASSIGNMENT
WEEK 1 M Aug. 24	Introduction to course	Print out and READ syllabus COMPLETE online plagiarism tutorial and quiz at: http://tutorials.sjlibrary.org/tutorial/plagiarism/index.htm **Be sure to follow the link to read the SJSU Academic Integrity Policy when taking this tutorial**
W Aug. 26	Political Culture and American Democracy	READ Flanagan & Zingale (F&Z) Ch.1
WEEK 2 M Aug. 31	Voting and Nonvoting	READ F&Z Ch. 2
W Sept. 2	Who are the Nonvoters? California's Exclusive Electorate	READ ON RESERVE (posted on course website): California Voter Foundation's California Participation Survey Report (2005), pp. 1-48. Baldassare (2006) "California's Exclusive Electorate," PPIC Report QUIZ 1 (Wed.) PLAGIARISM QUIZ RESULTS DUE TO PROF. JACKSON - WED. SEPT 2
WEEK 3 M Sept. 7	NO CLASS – LABOR DAY	
W Sept. 9	Who Participates?	READ ON RESERVE (posted on course website): Verba, Scholzman & Brady, <i>Voice and Equality</i> , Chs. 2-3 QUIZ 2 (Wed.)

POLS108 COURSE SCHEDULE – FALL 2008 <i>Subject to change with fair notice (announced in class or by email)</i>		
DATE	TOPIC	ASSIGNMENT
WEEK 4 M Sept. 14	Evaluating Participatory Representation EXTRA CREDIT OPPORTUNITY: TUESDAY SEPT. 15 TH : DON EDWARDS LECTURE, Featuring Tom Campbell, Republican candidate for governor 7:00pm, Morris Dailey Auditorium (Tower Hall)	READ ON RESERVE (posted on course website): Verba, Schlozman & Brady, <i>Voice and Equality</i> , Chs. 7-8 QUIZ 3 (Mon.)
W Sept. 16	What if Everyone Voted?	Paper #1 –DUE ONLINE AND IN CLASS 9/16 – Bring one hard copy to class and be prepared to discuss
WEEK 5 M Sept. 21	GOTV: Getting Out the Vote	READ Green & Gerber – Ch's 1-4 QUIZ 4 (Mon.)
W Sept. 23	GUEST LECTURE: Les Francis, Washington Media Group	Come to class prepared for questions/discussion
WEEK 6 M Sept. 28	SPRI Lab – Survey Training	Meet in SPRI Lab, Central Classroom Bldg., Room 100
W Sept. 30	Guest Lecture: Blair Bobier, Deputy Director Political Reform Program, New America Foundation	Read New America Foundation report on Instant Runoff Voting (IRV) Come to class prepared for questions/discussion
WEEK 7 M Oct. 5	NO CLASS (SURVEY PROJECT—FREE DAY)	
W Oct. 7	What did we learn from the survey project?	Paper #2 – Survey Project Reflection – DUE ONLINE AND IN CLASS 10/7 – Bring hard copy to class and be prepared to discuss

POLS108 COURSE SCHEDULE – FALL 2008 <i>Subject to change with fair notice (announced in class or by email)</i>		
DATE	TOPIC	ASSIGNMENT
WEEK 8 M Oct. 12	GOTV: The Tools	READ Green & Gerber – Ch's 5-8
W Oct. 14	GOTV: What works? EXTRA CREDIT OPPORTUNITY: DON EDWARDS LECTURE, Featuring CA Insurance Commissioner Steve Poizer, Republican candidate for governor, 7:00pm, Morris Dailey Auditorium (Tower Hall)	READ Green & Gerber Ch's 9-10 READ ON RESERVE (posted on course website): Gerber & Green (2000) APSR Article Addonizio, Green & Glaser (2007) PS Article QUIZ 5 (Wed.)
WEEK 9 M Oct. 19	CAMPUS FURLOUGH DAY – NO CLASS	
W Oct. 21	MIDTERM EXAM – WED. 10/21	Bring Large Blue Book, Pen
WEEK 10 M Oct. 26	Party Identification & Electoral Change	READ F&Z Chs. 3-4
W Oct. 28	Public Opinion and Ideology	Read F&Z Ch. 5-6 and Survey Research Methods Appendix QUIZ 6 (Wed.)
WEEK 11 M Nov. 2	Political Communication and the Media	Read F&Z Ch. 7
W Nov. 4	Vote Choice and Electoral Decisions	Read F&Z Ch. 8 QUIZ 7 (Wed.)
WEEK 12 M Nov. 9 W Nov. 11	What is Social Capital? VETERANS DAY – NO CLASS	Read Putnam Chs. 1-3
WEEK 13 M Nov 16	Social Capital – Socialization & Trust	Read Putnam Chs. 8-9
W Nov 18	Social Capital – Explaining the Decline I	Read Putnam Chs. 10-12 QUIZ 8 (Wed.)

POLS108 COURSE SCHEDULE – FALL 2008 <i>Subject to change with fair notice (announced in class or by email)</i>		
DATE	TOPIC	ASSIGNMENT
WEEK 14 M Nov 23 W Nov 25	Social Capital – Explaining the Decline II FURLOUGH DAY – NO CLASS HAPPY THANKSGIVING!	Read Putnam Chs. 13-15 QUIZ 9 (Mon.)
WEEK 15 M Nov 30 W Dec 2	So What? The Effects of Social Capital Social Capital – Looking Ahead	Read Putnam Chs. 16-19 Read Putnam Chs. 23-24 QUIZ 10 (Wed.)
WEEK 16 M Dec 7	LAST DAY OF CLASS Building Social Capital in the 21 st Century	PAPER #3 DUE ONLINE AND IN CLASS 12/7 – Bring one copy to class and be prepared to discuss Wrap up and Final Exam Review
M Dec 14	FINAL EXAM 7:15-9:30 Bring Large Blue Book, Pen	