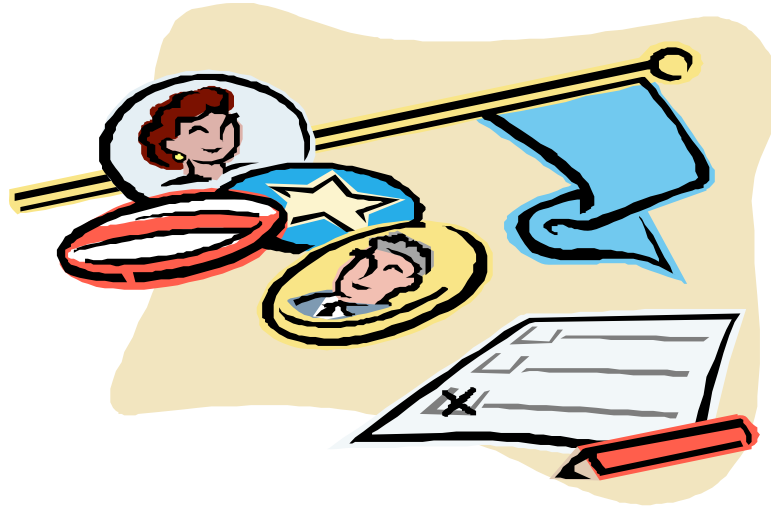


**San José State University  
Department of Political Science  
POLS108, Political Participation, Section 1  
Fall 2011**



**Instructor:** Dr. Melinda Jackson

**Office Location:** Clark Hall 402C

**Telephone:** (408) 924-5293

**Email:** [Melinda.Jackson@sjsu.edu](mailto:Melinda.Jackson@sjsu.edu) (preferred method of contact)

**Office Hours:** MW 11am-12pm, 5-6pm, and By Appointment

**Class Days/Time:** MW 12:00 – 1:15pm

**Classroom:** DMH 149A

**Faculty Web Page:** <http://www.sjsu.edu/people/melinda.jackson>

**Course D2L Website:** <http://sjsu.desire2learn.com>  
Follow log-in instructions on p.3

## Course description

In this course we will explore the nature of political participation in America. We will examine the roles of societal influences, the media, political campaigns, and individual voter psychology in shaping patterns of political participation, and how the Internet may be changing this process in important ways.

We will also participate in several “hands on” political activities in and outside of class, including a local survey project.

Finally, we will investigate the importance of civic participation in building social capital and how this helps “make democracy work.” You will come away from this class with a deeper understanding of what political participation means, from both a societal and a personal point of view!

## Student Learning Objectives:

- To gain familiarity with political science scholarship on political participation and voting. Students will learn about theories of voter turnout, vote choice, and civic and political engagement through course readings and writing assignments. Students will also test these theories through hands-on exercises in practical politics.
- To develop a critical understanding of the various influences on political participation and vote choice including political socialization and learning, social characteristics, the media, technology, campaigns and elections.
- To develop an understanding of the concept of social capital, and its relationship to political participation and democracy.

## Required Texts:

*Political Behavior of the American Electorate, 12<sup>th</sup> Edition* + 2011 Midterm Election Supplement (2011), CQ Press

By William H. Flanigan and Nancy H. Zingale, Elizabeth Theiss-Morse, and Michael W. Wagner (abbreviated F&Z in the course schedule)

ISBN: 978-1-60871-914-3

*Get Out the Vote: How to Increase Voter Turnout, 2<sup>nd</sup> Edition*, Brookings Institution Press

By: Donald P. Green & Alan S. Gerber ISBN: 978-0-8157-3267-9

*The Revolution Will Not Be Televised: Democracy, the Internet, and the overthrow of everything* (2004) By: Joe Trippi ISBN: 978-0-0607-6155-4

*Bowling Alone: The Collapse and Revival of American Community* (2000), Simon & Schuster, By Robert D. Putnam ISBN: 978-0-7432-0304-3

All texts available for purchase in the Spartan Bookstore. Additional readings will be posted electronically on the course D2L website.

### Course D2L Website

The course Desire2Learn (D2L) site is an online resource supplement for this course. Copies of all course materials include the syllabus, assignments, and reserve readings will be posted on the D2L course site and updated throughout the semester. You will also turn in your papers online using the “dropbox” feature on the D2L course site, which will automatically check for plagiarism using the turnitin.com database. It is your responsibility to become familiar with the D2L site for this class and make sure that you check it regularly.

To access the site go to <http://sjsu.desire2learn.com>

Username = *firstname.lastname*, but may have an appended number (e.g., *joshua.doe2*)

Password = Your initial D2L password is your 9 digit SJSU ID number.

See the online tutorial for additional login and usage information:

Desire2Learn Student Tutorial: [http://www.sjsu.edu/ecampus/students/D2L\\_students/](http://www.sjsu.edu/ecampus/students/D2L_students/)

***Email me immediately if you are still unable to access the site.***

### COURSE REQUIREMENTS

#### 1. Quizzes

There will be weekly quizzes covering the assigned readings, given in class, normally on Wednesdays (any alteration to this schedule will be announced in advance). Quizzes will be multiple choice and true/false, and will be worth 10 points each. There will be 11 quizzes total, and the top 10 quiz grades will be counted (i.e., your lowest quiz grade will be dropped). *Quizzes will make up 20% of your total grade. THERE ARE NO MAKE-UPS ON QUIZZES.*

#### 2. Exams

There will be two exams in this class – a midterm and a final. Generally speaking, the midterm exam will cover the material learned in the first half of the course, and the final exam will cover the material from the second half of the course. *Each exam will make up 20% of your total grade.*

#### 3. Papers

There will be three short papers in this class. Due dates are listed in the course schedule – more detail about each paper assignment will be given in class. *Each paper is worth 10% of your grade.*

#### 4. Survey Service Learning Project

Students in this class will participate in a door-to-door survey service learning project in conjunction with several other classes as part of the CommUniverCity San José service learning initiative. For this project, you will do door-to-door survey interviews in teams on **Saturday, October 8 – attendance is mandatory**. Please mark this date on your calendars and keep it free! More details of the survey project will be given in class.

We will cancel one regular class session to compensate for this out-of-class required time. Students will then write a short paper reflecting on their experience working on the survey project (Paper #2). THE SURVEY PROJECT IS A REQUIRED CLASS ACTIVITY – IT IS YOUR RESPONSIBILITY TO SPEAK TO PROF. JACKSON AS SOON AS POSSIBLE ABOUT ANY SCHEDULING DIFFICULTIES. *Survey project participation and the survey reflection paper are each worth 5% of your grade (10% total).*

#### 4. Participation

Class participation – meaning coming to class and engaging in class discussion and activities – *will also count for 10% of your total grade.* So that you have plenty of opportunities to participate, expect to be “mobilized” (i.e., called on by name) in class.

#### Evaluative Criteria:

Your grade will be calculated as follows. You may use the “my points” column to keep track of your grade in the class.

	Points	Percentage of total
Quizzes (10 @ 10 points each)	100	20%
Paper #1 – What if everyone voted?	50	10%
Paper #2 – Survey reflection paper	25	5%
Survey project participation	25	5%
Paper #3 – Building social capital	50	10%
Midterm Exam	100	20%
Final Exam	100	20%
Class Participation	50	10%
Total	500	100%

Final letter grades for the course will be assigned based on the following scale:

A = 92 – 100%	B = 82 – 87%	C = 72 – 77%	D = 62 – 67%
A- = 90 – 91%	B- = 80 – 81%	C- = 70 – 71%	D- = 60 – 61%
B+ = 88 – 89%	C+ = 78 – 79%	D+ = 68 – 69%	F = 59% or less

#### Accommodations:

If you need course adaptations or accommodations because of a disability, or if you need special arrangements in case the building must be evacuated, please make an appointment with me as soon as possible, or see me during office hours. Presidential Directive 97-03 requires that students with disabilities register with DRC to establish a record of their disability.

#### Academic Integrity:

Your own commitment to learning, as evidenced by your enrollment at San José State University, and the University's Academic Integrity Policy requires you to be honest in all your academic course work. Faculty members are required to report all infractions to the Office of Student Conduct and Ethical Development.

The policy on academic integrity can be found at: <http://www2.sjsu.edu/senate/S04-12.pdf>.

The website for the Office of [Student Conduct and Ethical Development](http://www.sa.sjsu.edu/judicial_affairs/index.html) is:

[http://www.sa.sjsu.edu/judicial\\_affairs/index.html](http://www.sa.sjsu.edu/judicial_affairs/index.html)

Instances of academic dishonesty will not be tolerated. Cheating on exams or plagiarism (presenting the work of another as your own, or the use of another person's ideas without giving proper credit) will result in a failing grade and sanctions by the University. For this class, all assignments are to be completed by the individual student unless otherwise specified. If you would like to include in your assignment any material you have submitted, or plan to submit for another class, please note that SJSU's Academic Policy F06-1 requires approval of instructors.

**Other Course Policies:**

Late papers or assignments will be penalized with lower grades.

**No** late papers will be accepted after the last day of class.

**Missed exams may not be made up unless students are excused in advance.**

**Medical and family emergencies must be documented.**

**LATE ARRIVALS, EARLY DEPARTURES AND DISRUPTIONS OF CLASS IN ANY FORM ARE UNACCEPTABLE. CELL PHONES AND OTHER ELECTRONIC EQUIPMENT SHOULD BE TURNED OFF AT ALL TIMES IN THE CLASSROOM.**

**Other Useful Information:**

The **library liaison for Political Science** is available to answer questions and provide one-on-one help learning using the library for research. She is also very friendly and happy to meet with students, so don't be afraid to take advantage of her expertise!

Her name and contact info is:           Crystal Goldman  
  Librarian (Political Science Liaison)  
  (408) 808-2015  
  [Crystal.Goldman@sjsu.edu](mailto:Crystal.Goldman@sjsu.edu)

**Learning Assistance Resource Center**

The Learning Assistance Resource Center (LARC) is located in Room 600 in the Student Services Center. It is designed to assist students in the development of their full academic potential and to motivate them to become self-directed learners. The center provides support services, such as skills assessment, individual or group tutorials, subject advising, learning assistance, summer academic preparation and basic skills development. LARC is an excellent resource if you find yourself needing some extra help with writing or other course skills. [The LARC website is located at http://www.sjsu.edu/larc/](http://www.sjsu.edu/larc/).

**SJSU Writing Center**

The SJSU Writing Center is located in Room 126 in Clark Hall. It is staffed by professional instructors and upper-division or graduate-level writing specialists from each of the seven SJSU colleges. Our writing specialists have met a rigorous GPA requirement, and they are well trained to assist all students at all levels within all disciplines to become better writers. [The Writing Center website is located at http://www.sjsu.edu/writingcenter/about/staff/](http://www.sjsu.edu/writingcenter/about/staff/).

**Peer Mentor Center**

The Peer Mentor Center is located on the 1<sup>st</sup> floor of Clark Hall in the Academic Success Center. The Peer Mentor Center is staffed with Peer Mentors who excel in helping students manage university life, tackling problems that range from academic challenges to interpersonal struggles. On the road to graduation, Peer Mentors are navigators, offering "roadside assistance" to peers who feel a bit lost or simply need help mapping out the locations of campus resources. Peer Mentor services are free and available on a drop-in basis, no reservation required. The Peer Mentor Center website is located at <http://www.sjsu.edu/muse/peermentor/>

<b>POLS108 COURSE SCHEDULE – FALL 2011</b>		
<i>Subject to change with fair notice (announced in class or by email)</i>		
<b>DATE</b>	<b>TOPIC</b>	<b>ASSIGNMENT</b>
WEEK 1 W Aug. 24	Introduction to course	Print out and READ syllabus COMPLETE online plagiarism tutorial and quiz at: <a href="http://tutorials.sjlibrary.org/tutorial/plagiarism/index.htm">http://tutorials.sjlibrary.org/tutorial/plagiarism/index.htm</a> **Be sure to follow the link to read the SJSU Academic Integrity Policy when taking this tutorial**
WEEK 2 M Aug. 29  W Aug 31	Political Culture and American Democracy  Voting and Nonvoting	READ Flanagan & Zingale (F&Z) Ch.1  READ F&Z Ch. 2 QUIZ 1 (Wed.)  *PLAGIARISM QUIZ RESULTS DUE TO PROF. JACKSON AUG 31*
WEEK 3 M Sept. 5  W Sept. 7	NO CLASS – LABOR DAY  California's Exclusive Electorate Who are the Nonvoters?	READ ON RESERVE (posted on course website): California Voter Foundation's California Participation Survey Report (2005), pp. 1-48. Baldassare (2006) "California's Exclusive Electorate," PPIC Report QUIZ 2 (Wed.)
WEEK 4 M Sept. 12  W Sept. 14	Who participates?  Evaluating Participatory Representation	READ ON RESERVE (posted on course website): Verba, Schlozman & Brady, <i>Voice and Equality</i> , Chs. 2-3  READ Verba, Schlozman & Brady, <i>Voice and Equality</i> , Chs. 7-8 QUIZ 3 (Wed.)

<b>POLS108 COURSE SCHEDULE – FALL 2011</b>		
<i>Subject to change with fair notice (announced in class or by email)</i>		
<b>DATE</b>	<b>TOPIC</b>	<b>ASSIGNMENT</b>
WEEK 5 M Sept. 19	What if Everyone Voted?	Paper #1 – DUE ONLINE IN D2L DROPBOX AND IN CLASS 9/19 Bring one hard copy to class and be prepared to discuss
W Sept. 21	Guest Lecture (tentative): Les Francis, Former White House Deputy Chief of Staff to President Jimmy Carter	READ Bio (posted on D2L), come to class prepared to ask questions
WEEK 6 M Sept. 26	GOTV: Getting Out the Vote	READ Green & Gerber – Ch's 1-4
W Sept. 28	GOTV: The Tools	READ Green & Gerber – Ch's 5-8 QUIZ 4 (Wed.)
WEEK 7 M Oct. 3	GOTV: What works?	READ Green & Gerber Ch's 9-10 READ ON RESERVE (posted on course D2L site): Gerber & Green (2000) APSR Article Addonizio, Green & Glaser (2007) PS Article QUIZ 5 (Mon.)
W Oct. 5	MIDTERM EXAM – WED. 10/5	BRING LARGE BLUE BOOK AND PEN
<b>SAT OCT 8<sup>TH</sup></b>	<b>CommUniverCity Door-to-Door Survey Project</b>	<b>REQUIRED CLASS ACTIVITY</b> <b>Response (Paper 2) DUE MON. 10/17</b>
WEEK 8 M Oct. 10	Party Identification & Electoral Change	READ F&Z Chs. 3-4
W Oct. 12	NO CLASS (SURVEY PROJECT FREE DAY)	

<b>POLS108 COURSE SCHEDULE – FALL 2011</b>		
<i>Subject to change with fair notice (announced in class or by email)</i>		
DATE	TOPIC	ASSIGNMENT
WEEK 9 M Oct. 17	What did we learn from the survey project?	Paper #2 – Survey Project Reflection DUE ONLINE IN D2L DROPBOX AND IN CLASS 10/17 Bring hard copy to class and be prepared to discuss
W Oct. 19	Social Characteristics of Partisans & Independents  <b>EXTRA CREDIT OPPORTUNITY:</b> Fall 2011 Don Edwards Lecture series, featuring former CA State Assembly Leader Fabian Núñez, Morris Dailey Auditorium, 7:00pm	READ F&Z Ch. 5 Quiz 6 (Wed.)  Extra Credit response paper DUE WED. 10/26
WEEK 10 M Oct. 24	Public Opinion and Ideology	READ F&Z Ch. 6 and Survey Research Methods Appendix
W Oct. 26	Political Communication and the Media	READ F&Z Ch. 7 QUIZ 7 (Wed.) Extra Credit Don Edwards Lecture paper DUE WED. 10/26 ONLINE ONLY IN D2L DROPBOX
WEEK 11 M Oct 31	Vote Choice and Electoral Decisions Do People Vote “Correctly?”	READ F&Z Ch. 8 READ ON RESERVE (posted on course website): Laurel & Redlawsk (1997) APSR Article
W Nov. 2	Analyzing the 2010 Midterm Election	READ F&Z 2011 Midterm Election supplement (all) QUIZ 8 (Wed.)
WEEK 12 M Nov. 7	Virtual Politics: Does the Internet help or hurt democracy?	READ <i>The Revolution will not be Televised</i> , Trippi (2004)
W Nov. 9	Campaigns on the Net	QUIZ 9 (Wed.): Candidate website analysis assignment DUE ONLINE IN D2L DROPBOX AND HARD COPY IN CLASS Bring hard copy to class and be prepared to discuss your analysis

<b>POLS108 COURSE SCHEDULE – FALL 2011</b>		
<i>Subject to change with fair notice (announced in class or by email)</i>		
<b>DATE</b>	<b>TOPIC</b>	<b>ASSIGNMENT</b>
WEEK 13 M Nov. 14	What is Social Capital?	Read Putnam Chs. 1-3
W Nov. 16	Social Capital – Socialization & Trust	Read Putnam Chs. 8-9 QUIZ 10 (Wed.)
WEEK 14 M Nov 21	Social Capital – Explaining the Decline	Read Putnam Chs. 10-12
W Nov 24	NO CLASS – ENJOY THANKSGIVING!	
WEEK 15 M Nov 28	Social Capital – Explaining the Decline (continued)	Read Putnam Chs. 13-15
W Nov 30	So What? The Effects of Social Capital	Read Putnam Chs. 16-19 QUIZ 11 (Wed.)
WEEK 16 M Dec 5	Social Capital – Looking Ahead	Read Putnam Chs. 23-24
W Dec 7	LAST DAY OF CLASS Building Social Capital in the 21 <sup>st</sup> Century	PAPER #3 DUE ONLINE IN D2L DROPBOX AND IN CLASS 12/7 – Bring one copy to class and be prepared to discuss Wrap up and Final Exam Review
WED Dec 14	FINAL EXAM 9:30am-12:00pm	BRING LARGE BLUE BOOK, PEN