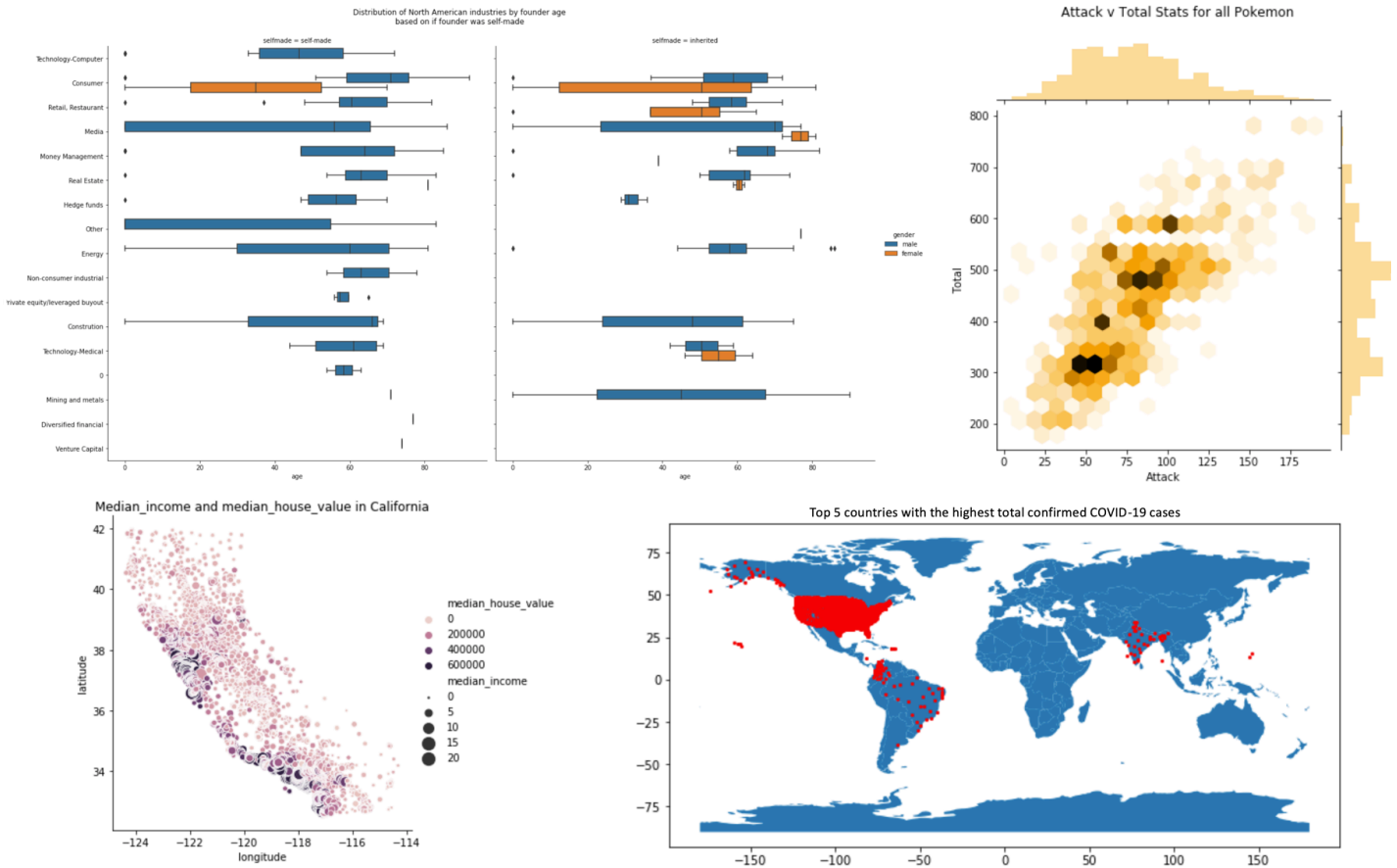


CS 185C-01

Introduction to Data Analysis & Visualization

TuTh 12:00PM - 1:15PM Course # 22207



Instructor: Wendy Lee, Ph.D. wendy.lee@sjsu.edu

Prerequisites: CS22B and graduate standing, or CS146

Topics:

- ▶ Filter, combine, reshape, and transform large datasets.
- ▶ Handle missing or inconsistent values in datasets.
- ▶ Perform data mining and data analysis.
- ▶ Create static and interactive data visualizations.
- ▶ Analyze big data using techniques such as memory mapping, zero memory copy policy, and lazy computations.