



2020-2021

University Housing Services

SAN JOSÉ STATE UNIVERSITY

San Jose State University
Resident Activity Center



COSTS

Housing rent includes basic utilities, wi-fi internet access, internet-based TV and furniture. To view the most up-to-date costs for our housing facilities, visit housing.sjsu.edu



MEAL PLANS

Meal plans are mandatory for first-year students/residents of CVC, Joe West, Washburn Hall, and CV2, and optional for residents of CVA and CVB. There are a variety of meal plans offered. Students are sure to find one that fits their needs! More information on current meal plan options can be found at <https://dineoncampus.com/sjsu>



WHAT TO BRING

It is a good idea to contact your roommate(s) prior to moving into the residence halls. Contacting your roommate can help you avoid duplicating items and bringing more than you need! Here is a short list of items that you should plan to bring:

- Extra-long twin sheets (except faculty/staff apartments)
- Pillows and blankets
- Towels
- Personal toiletries
- Cleaning supplies
- Trash bags
- Alarm clock
- Computer (desktop or laptop)
- Television
- Surge protector and extension cords (UL approved)
- Flashlight

For more information on what to bring when you move in, visit housing.sjsu.edu/housingaz/movein

Putting You at the Center of the SJSU Experience!

A RESIDENTIAL LEARNING COMMUNITY

Living on campus is a critical part of the San José State student experience. Through intentional learning opportunities and community involvement, residents will be able to engage as contributing and empowered individuals who foster thriving communities. Our goal is to help residents develop self-awareness, relationships, cultural competency, and ethical leadership through a wide variety of initiatives such as one on one conversations, roommate agreements, workshops and more.

The residence halls and apartments are located on the main San José State campus, near classroom buildings, the library, recreation and dining facilities and downtown

San José. Professional and student staff members live within the residential community, providing residents with support and programming. Staff members are trained to handle a variety of situations, including roommate conflicts, policy violations and crisis situations.

Housing programs and services are designed to cultivate students' academic and personal growth by supporting their transition to the university, acting as an extension of their classroom experience, and increasing their awareness of community responsibility. Through intentional strategies, residential students have the opportunity to build one on one relationships, get involved in social events, cultural activities, intramural sports, community service, and many other campus activities.

Weeks of Welcome

During the first weeks of the fall semester, there are many social events to help students get connected and build friendships, educational programs to support students as they develop their independence, and academic workshops to assist students in preparing for their classes.



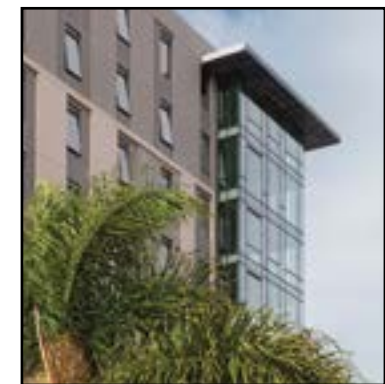
CAMPUS VILLAGE



JOE WEST HALL



WASHBURN HALL



CAMPUS VILLAGE 2



RESIDENT ACTIVITY CENTER



VILLAGE MARKET



COURTESY DESK



DIAZ COMPEAN STUDENT UNION

HOUSING APPLICATION PROCESS

Housing spaces are limited, and we suggest that you apply for housing as soon as you decide to become a Spartan! It is a good idea to file your intent to enroll prior to applying for housing, but you can apply for housing any time after the application becomes available (usually, early in the spring).

Housing applications are accepted online and all applicants should be prepared to submit the following:

- A completed online University Housing Services application
- A nonrefundable application fee
- An initial payment (which is applied towards housing charges)

To view the most up-to-date fees for housing, visit housing.sjsu.edu.

All steps must be completed in order for your housing application to be considered complete.

The housing application deadline is May 1. The sooner you submit your completed license agreement and initial payment, the greater your chance of receiving your hall preference. If you plan to live on campus and will need financial assistance to do so, you should apply for financial aid prior to the financial aid priority application deadline. International students do not qualify for financial aid.

To apply for housing, visit housing.sjsu.edu and click on the "Housing Application Portal" button to begin the application process.

FRESHMAN HOUSING REQUIREMENT

Freshmen who graduate from a high school located in a city outside a 30-mile radius of campus are required to live on campus their first year. Appeals for exceptions to the housing requirement will be reviewed after admission. For more information about the Exemption Appeal process, visit <http://www.housing.sjsu.edu/prospectiveresidents>

ACCOMMODATIONS

University Housing Services is committed to meeting the needs of our residents to the best of our ability. Some housing facilities (including bathrooms) are accessible to residents in wheelchairs, and special-adapted rooms are available for residents who are hearing and/or visually impaired. Other accommodations include:

- Hearing, mobility or vision impairment (where physical accommodation or building adaptation may be required)
- Religious reasons that require special facilities (such as dietary or special room arrangements)
- Needs related to lesbian, gay, bisexual, transgender or queer identities
- Medical conditions; including mental health concerns
- Disabilities that may require a live-in attendant (at the resident's expense)

PARKING FOR UHS RESIDENTS

All residents have the option of requesting a CV parking permit for the underground Campus Village Parking Garage, or an "H" parking permit for the Seventh Street Garage. The Campus Village Parking Garage is conveniently located near our Campus Village Residences while the Seventh Street Garage is in closer proximity to our Residence Halls (Joe West and Washburn Halls). Parking in the Campus Village garage is limited on a first-come, first-served basis.

RESIDENT ACTIVITY CENTER

The Resident Activity Center (RAC) located in Campus Village Building B, is an open space for residents to relax with friends and create a balance between academics and social life.

Available to all residents, this multi-purpose space is complete with pool tables, foosball tables, ping pong, and a piano. The RAC also has meeting rooms, which can be used for studying or watching internet-based TV. All equipment and movies can be checked out at the Courtesy Desk.

VILLAGE MARKET

Located on the ground floor of CVB, Village Market is an express store where students and staff can purchase groceries and convenience items using credit or gold (Spartan) points. Customers can find a mix of home essentials, health/beauty products, and basic kitchen items. The store also features a wide variety of beverages, snacks, pizza, ice cream, and breakfast options.

COMPUTER LAB

The University Housing Services Computer Lab is open to all residents. Located in Campus Village Building B on the first floor, the Computer Lab has PC and Mac computers available on a first-come, first-served basis. Residents have access to the Internet and Microsoft Office applications, and printing is also available for a "per page" fee.

SPARTAN HUB

Located on the first floor of Campus Village Building B, next to the Resident Activity Center, the Spartan Hub provides workshops, tutoring, advising, study space and many resources to support the academic and educational aspirations of our residents.

COURTESY DESKS

Courtesy desks are located on the ground floor of each of our residence halls. As an added measure of safety, all guests must check-in and show identification at the courtesy desk 24 hours a day. Courtesy desk services also include recreation equipment check out, laundry card purchase, campus and community information.

CONFERENCE SERVICES

In the summer, conference groups, camps, and individual campus visitors are all invited to enjoy our summer conference services. Each of our residence halls offers unique, affordable living accommodations that can cater to your group's needs. For more information on San José State University Conference Services, please visit <http://www.housing.sjsu.edu/conferenceservices> or email us at uhs-conferenceassistant@sjsu.edu.

**We look forward to
hosting you here at SJSU!**

Visit housing.sjsu.edu for hours of operation.

Residence Halls

CAMPUS VILLAGE BUILDING B (CVB)



Campus Village Building B is an apartment building designed to accommodate over 1,550 sophomores, upper-division, and graduate students who seek a more private, independent living environment. Stretching to 15-stories at its highest point, Campus Village Building B offers residents a variety of living options: Studios, three-bedroom, four-bedroom, or five-bedroom apartments, (single and double occupancy) all equipped with a kitchen and a living room area. Kitchens in CVB apartments do not have garbage disposals. The Resident Activity Center, Spartan Study Hub, and the Village Market are also located in Campus Village Building B. This building is equipped with elevators and air conditioning.

Studio Apartments

Studios are single-occupancy and offer a combined living area (no separate bedroom and living room), a bathroom and a kitchenette. The living area includes a bed, dresser, closet, desk and chair, sofa, coffee table, and lamp. The kitchenette comes with a sink, two-burner stovetop microwave oven, and mini-fridge.

Three Bedroom Apartments

The double-occupancy three-bedroom apartments are for two people per bedroom and offer two bathrooms, a living/dining area and a full kitchen. The kitchen includes a full-sized refrigerator, stovetop, oven, and dishwasher.

Four Bedroom Apartments

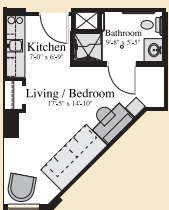
The single-occupancy four-bedroom apartments are designed for one person per bedroom and offer one bathroom, a living/dining area and a full kitchen. The kitchen includes a full-sized refrigerator, stovetop oven, and dishwasher. Note: Some four-bedroom apartments offer a Junior Double option in which one room in the apartment is double occupancy.

Four Bedroom Apartment - Junior Double

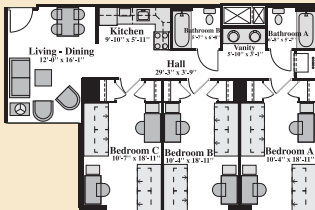
Some four bedroom apartments offer a Junior Double option in which one room in the apartment is double occupancy.

Five Bedroom Apartments

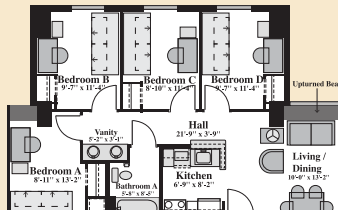
The single-occupancy five-bedroom apartments have five bedrooms designed for one person per bedroom and offer one bathroom, a living/dining area, and a full kitchen. The kitchen includes a full-sized refrigerator, stovetop, oven, and dishwasher.



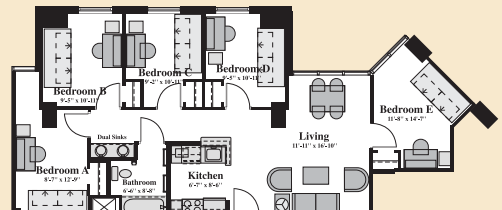
STUDIO



THREE BEDROOM



FOUR BEDROOM



FIVE BEDROOM

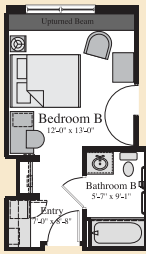
CAMPUS VILLAGE BUILDING A (CVA)



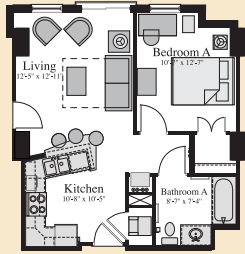
Campus Village Building A (CVA) is an eight-story apartment building designed to accommodate approximately 200 faculty, staff, graduate and upper-division undergraduate students. Graduate students, seniors, and juniors may rent a two-bedroom apartment in CVA that two students share, each having their own bedroom. CVA also has two-bedroom apartments that four students share, two students sharing each bedroom and a shared kitchen. The kitchens include a full-sized refrigerator, oven, dishwasher, stackable washer and dryer and a sink with garbage disposal.

Faculty and staff may choose from furnished and unfurnished one bedroom/one bath or two-bedroom/two-bath units or a single efficiency room. Efficiency rooms are similar to hotel rooms and feature a living area, bathroom, and microwave/mini-fridge station. A limited number may be available to graduate students. CVA is equipped with elevators and air conditioning.

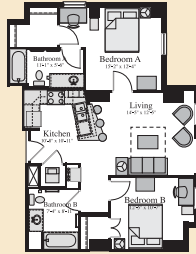
Expanded versions of floor plans are available at www.housing.sjsu.edu



EFFICIENCY ROOM



ONE BEDROOM

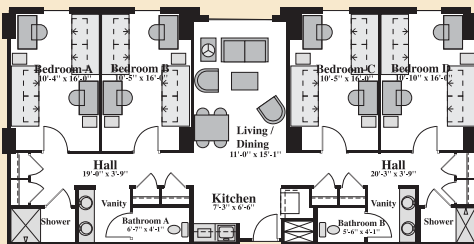


TWO BEDROOM

CAMPUS VILLAGE BUILDING C (CVC) “THE SUITES”



The Suites is a seven-story, suite-style residence hall available to first-year students. The Suites emphasize community living, with a programming focus on the transition to college life, building connections to campus, and supportive activities for academic success. This building is equipped with elevators and air conditioning and can accommodate approximately 570 students. Each suite consists of four bedrooms, two bathrooms, a common living area, and a kitchenette, which includes a sink and microwave. All bedrooms are designed and furnished for two students, with a total of eight students sharing the suite. Some suites offer triple occupancy, with three students in one bedroom, with a total of nine students sharing the entire suite. All residents of Campus Village Building C must purchase a Block meal plan.

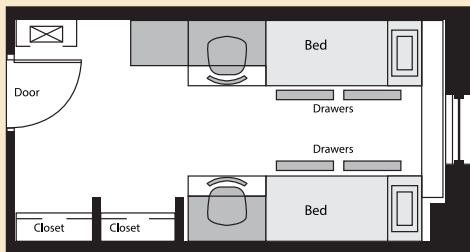


SUITE

CAMPUS VILLAGE BUILDING 2 (CV2)



This 10-story residence hall housing approximately 950 first-year students is equipped with common study rooms, lounges, multi-purpose room, recreation space and other student support spaces to ensure a smooth transition to college life. Bedrooms are double occupancy rooms designed and furnished for two people. Some rooms offer triple occupancy, with three students sharing one bedroom. Housing rent includes basic utilities, Wi-Fi internet access, internet-based TV and furnished rooms. All residents of Campus Village 2 must purchase a Block meal plan.

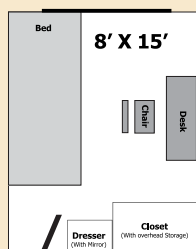


DOUBLE OCCUPANCY ROOM

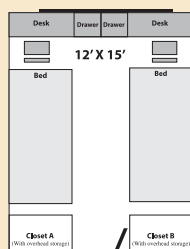
JOE WEST HALL



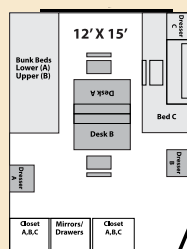
Joe West Hall is a 12-story residence hall that houses over 650 incoming first-year students. Joe West Hall provides a number of living options including Single, double and triple occupancy rooms. Joe West Hall is equipped with two elevators but does not have air conditioning. Housing rent includes basic utilities, Wi-Fi internet access, internet-based TV, and furnished rooms. All residents of Joe West Hall must purchase a Block meal plan.



SINGLE



DOUBLE

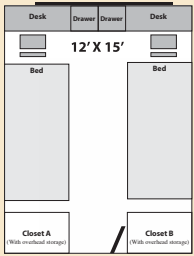


TRIPLE

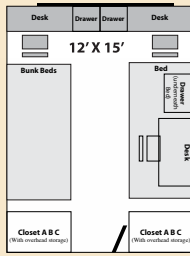
WASHBURN HALL “THE BRICKS”



The small community experience in Washburn Hall is designed for incoming first-year students in order to ease the transition to college and provide a supportive first-year experience. This three-story residence hall offers a small living-learning environment for approximately 250 students. The building is divided into six wings of approximately 48 students each, a design that helps promote community among the residents. Students have the option of double or triple occupancy rooms (two or three students per room). Housing rent includes basic utilities, Wi-Fi internet access, internet-based TV, and furnished rooms. This building does not have an elevator but offers air conditioning. All residents of Washburn Hall must purchase a Block meal plan.



DOUBLE



TRIPLE



Housing Costs

Housing rent is based on double occupancy, furnished units with a 10-month contract. Rent includes basic utilities, wi-fi internet access, internet-based TV and furniture. Please note rent amounts are subject to change. To view the most up-to-date costs for our housing facilities, visit housing.sjsu.edu

Housing Options	Description	Residents	Rent for School Year
Campus Village Apartments – Building A “CVA”	Eight-story building: Efficiencies, one and two bedroom units and bed spaces	Juniors, Seniors, Graduate Students, Faculty and Staff	\$12,237
Campus Village Apartments – Building B “CVB”	Fifteen-story building: Studios, three, four and five-bedroom units	Sophomores, Juniors, Seniors, Graduate Students	\$11,836
Campus Village Suites – Building C “CVC”	Seven-story building: Four-bedroom units	Freshmen	\$11,811
Campus Village 2 “CV2”	Ten-story building: Traditional hall	Freshmen	\$12,515
Washburn Hall “The Bricks” “The Classics”	Three-story building: Traditional hall	Freshmen	\$9,333
Joe West Hall “The Classics”	Twelve-story building: Traditional hall	Freshmen	\$9,333
International House “I-House”	Large residence near campus. Home to 70 U.S. and international students	Freshmen, Sophomores, Juniors, Seniors, Graduate Students	\$11,020

Meal Plans

Meal plans are mandatory for freshmen residents. There are a variety of meal plans offered, including plans offering a limited number of meals per semester. Students are sure to find one that fits their needs. Please note that meal plan amounts are subject to change. More information on current meal plan options can be found at dineoncampus.com/sjsu

Housing Options	Meal Plan Options	Semester	School Year	Meal Plan and Rent for School Year
Campus Village Apartments – Building A “CVA”	90 Swipes* per Semester 145 Swipes* per Semester	\$1,375 \$1,875	\$2,750 \$3,750	\$12,237 (no meal plan) \$14,987 (40 swipes) \$15,987 (145 swipes)
Campus Village Apartments – Building B “CVB”				\$11,836 (no meal plan) \$14,586 (40 swipes) \$15,586 (145 swipes)
Campus Village Suites – Building C “CVC”	15 Swipes* per week 21 Swipes* per week	\$2,575 \$3,050	\$5,150 \$6,100	\$16,961 (15 Swipes) \$17,911 (21 Swipes)
Campus Village 2 “CV2”				\$17,665 (15 Swipes) \$18,615 (21 Swipes)
Washburn Hall “The Bricks” “The Classics”				\$14,483 (15 Swipes) \$15,433 (21 Swipes)
Joe West Hall “The Classics”				\$14,483 (15 Swipes) \$15,433 (21 Swipes)
International House “I-House”	7-day meal plan (Includes 2-3 meals/day prepared on-site at I-House + 50 Swipes* in The Commons on campus)	\$2,871	\$5,742	\$16,762

* A swipe is how you pay when you eat at the dining hall known as The Commons. Your meal plan includes a certain number of all-you-care-to-enjoy meals stored on your student ID Card. One swipe will be used each time you enter The Commons.