



# **SAN JOSÉ STATE UNIVERSITY**

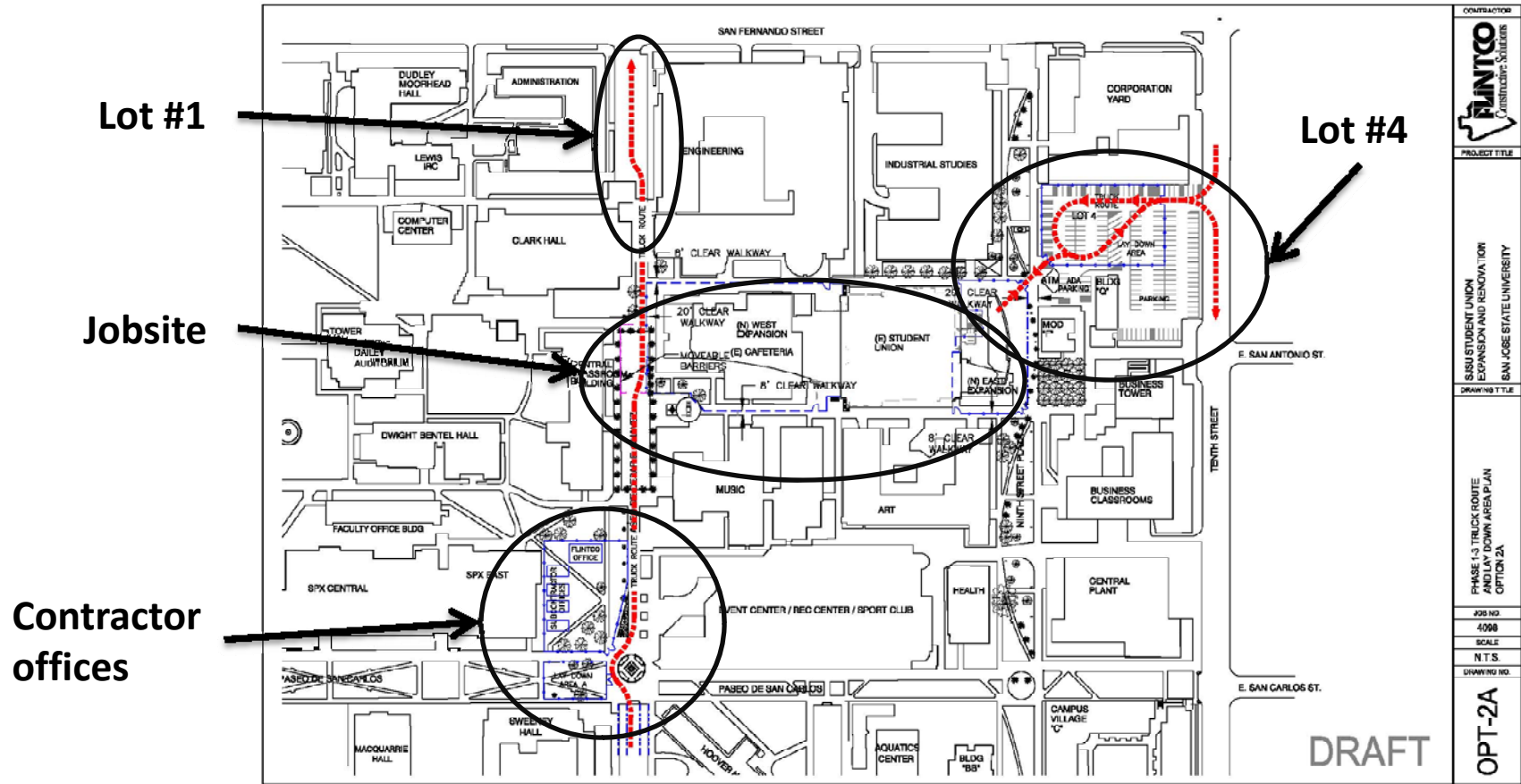
## **Traffic Control**

Student Union Renovation and  
Expansion

Student Health and Counseling Facility

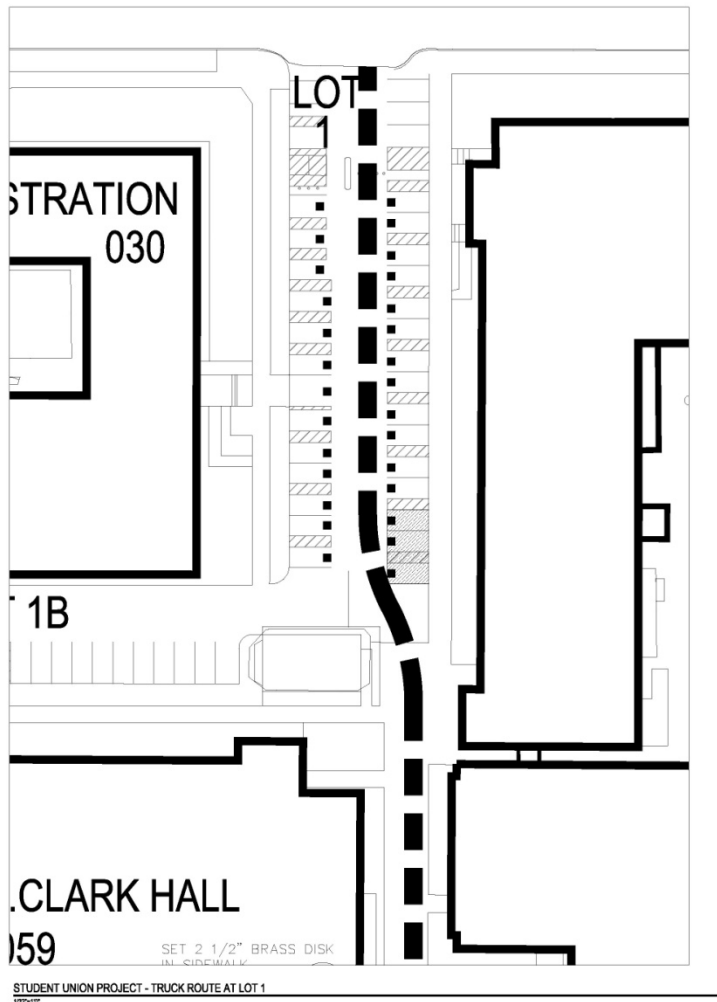


# SU Renovation and Expansion – Traffic Control Plan Recommendation



CONTRACTOR	<b>PLINTO</b> Construction Services
PROJECT TITLE	BUSINESS TOWER EXPANSION AND RENOVATION
DRAWING TITLE	SAN JOSE STATE UNIVERSITY
JOB NO.	4098
SCALE	N.T.S.
DRAWING NO.	OPT-2A

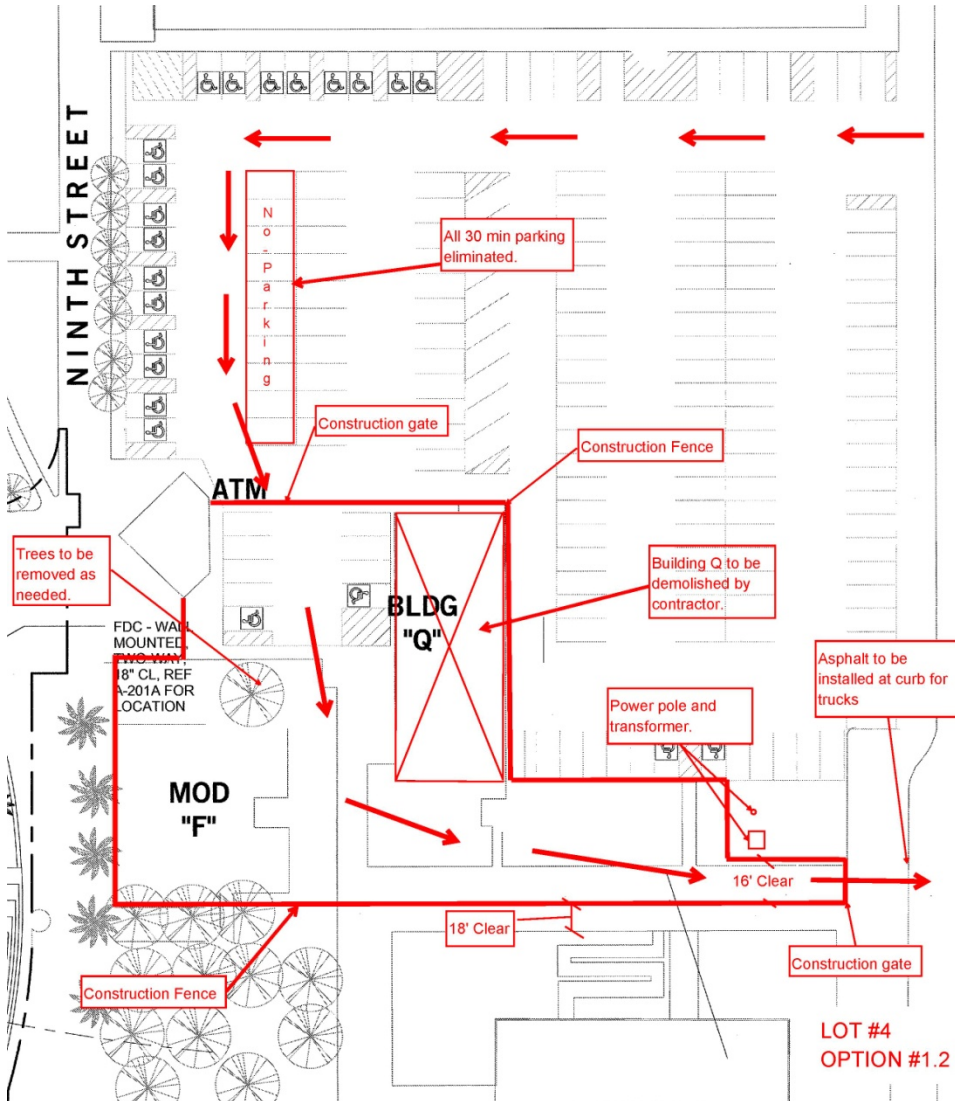
# Recommended Lot 1



- Loss of only 3 ADA parking stalls.
- Reduced barriers.
- Easy access of parking lot for users.
- Exit only.



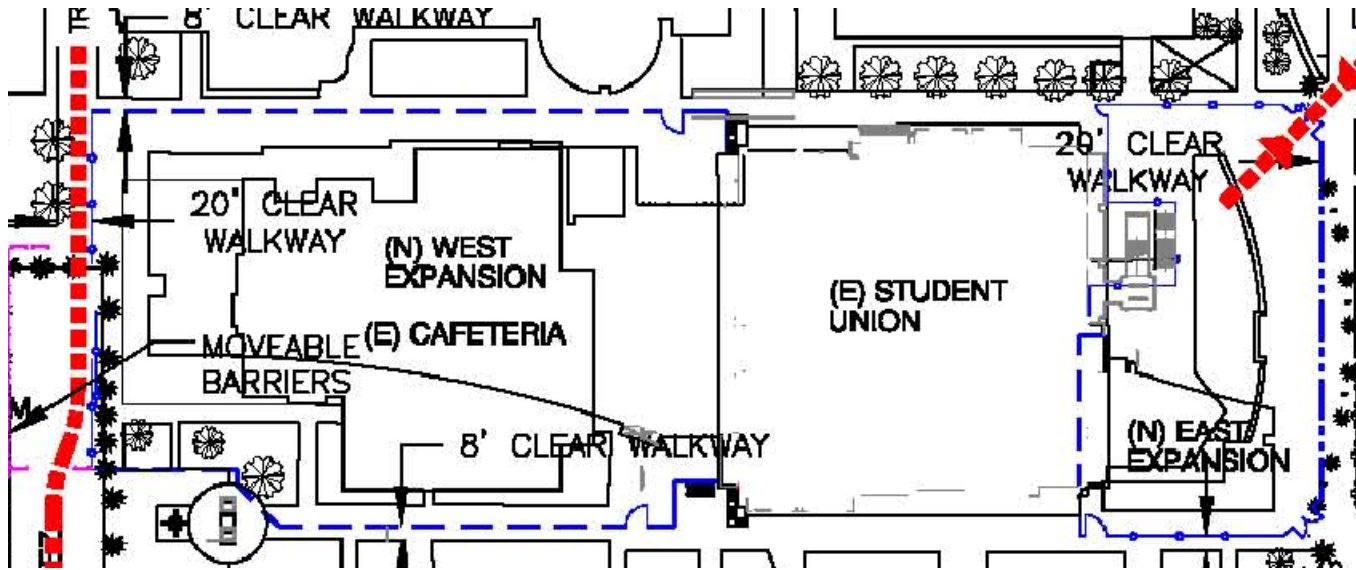
# Lot 4 Option #2



- Contractor to demolish building Q.
- Contractor to have possession of Mod "F".
- Loss of all 30 minute parking.
- Loss of two ADA parking stalls.
- Loss of 2 employee parking stalls
- Loss of 3 management parking stalls.

LOT #4  
OPTION #1.2

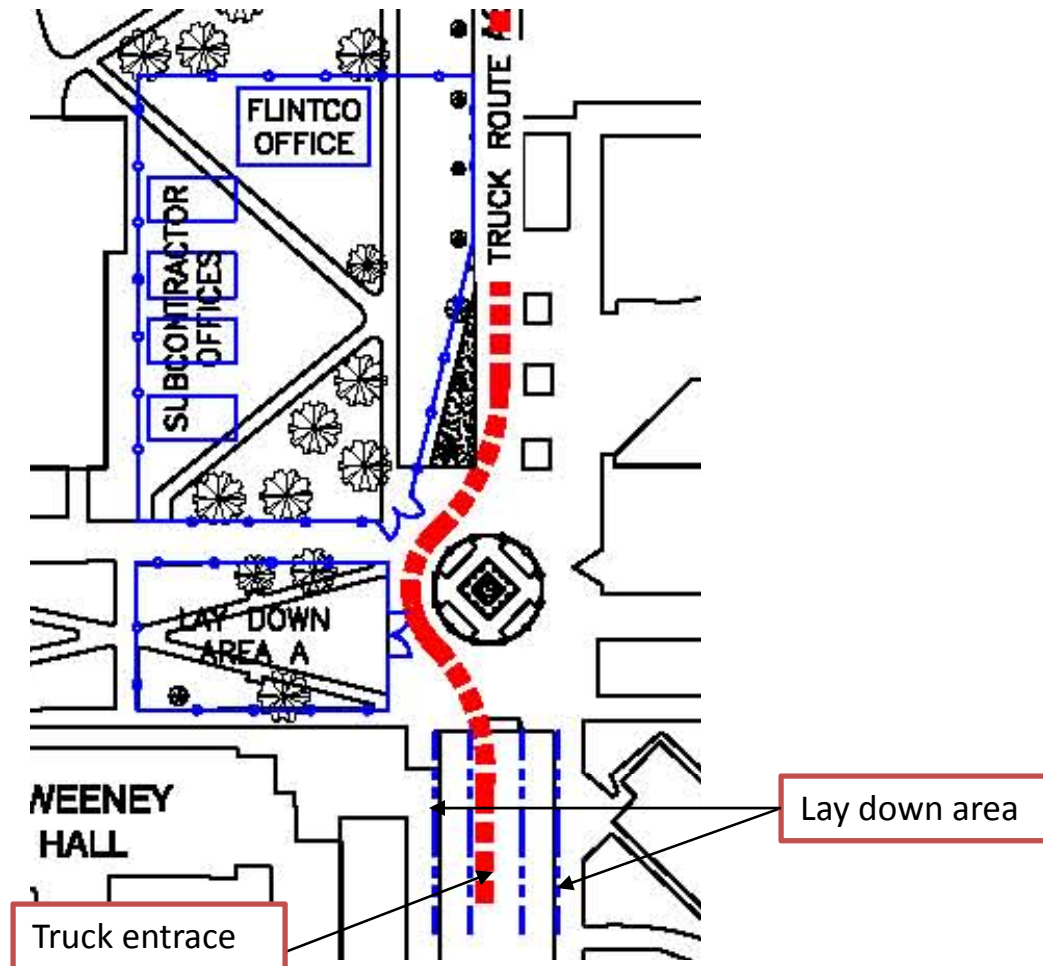
# Recommended Jobsite



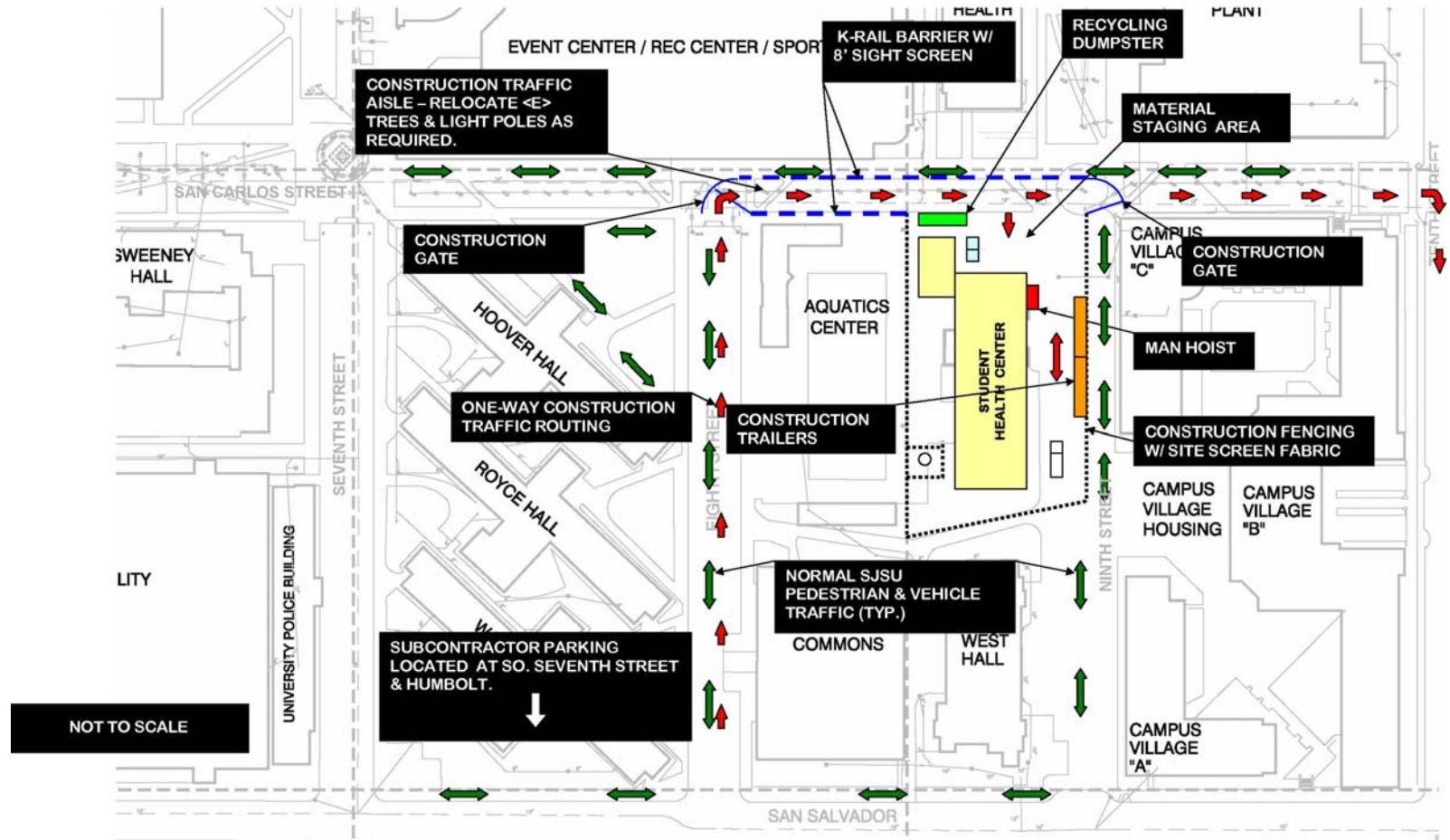
- Directional signage will be provided by the Contractor.



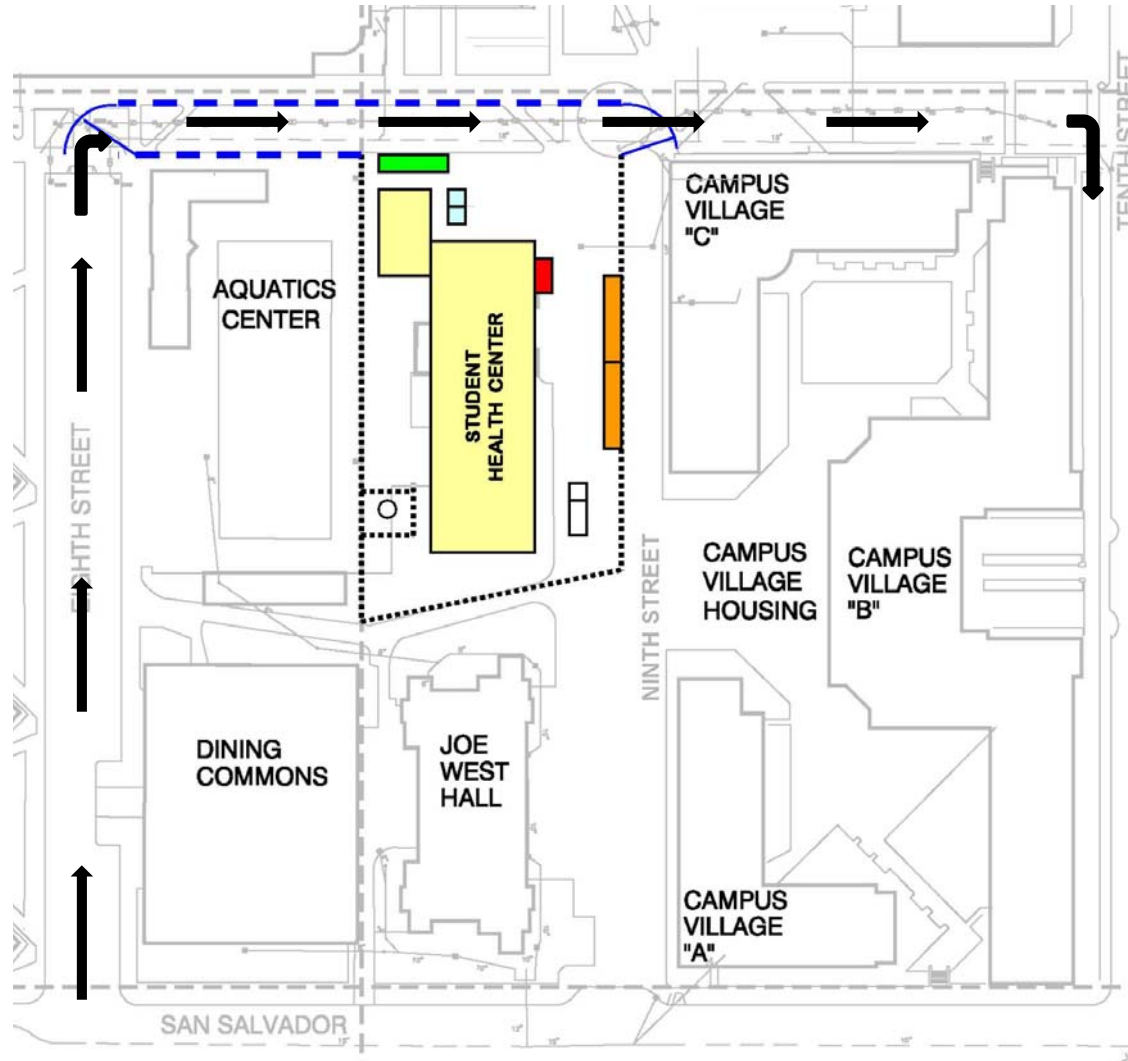
# Recommendation Office location



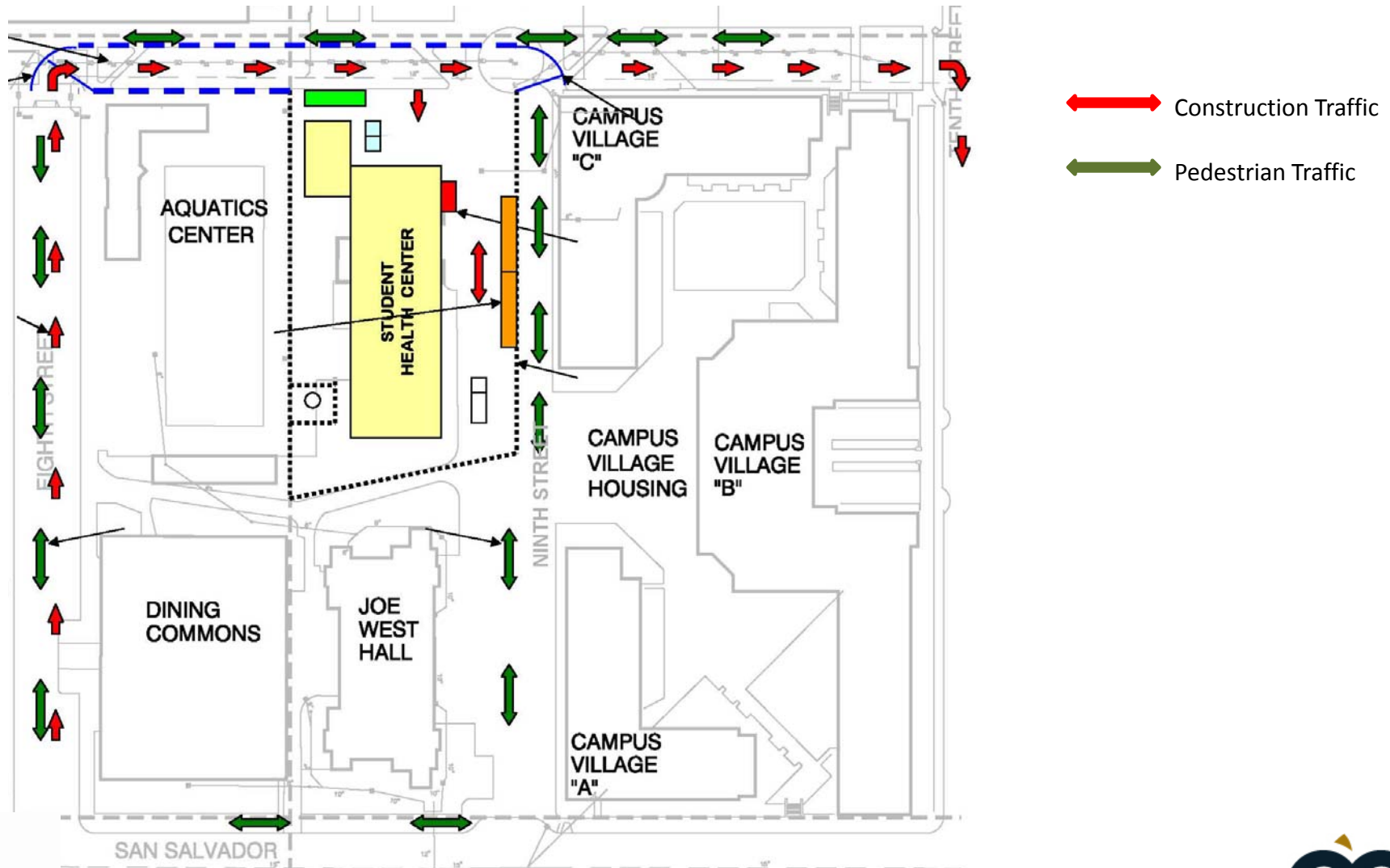
# Student Health and Counseling – Traffic Control Plan Recommendation



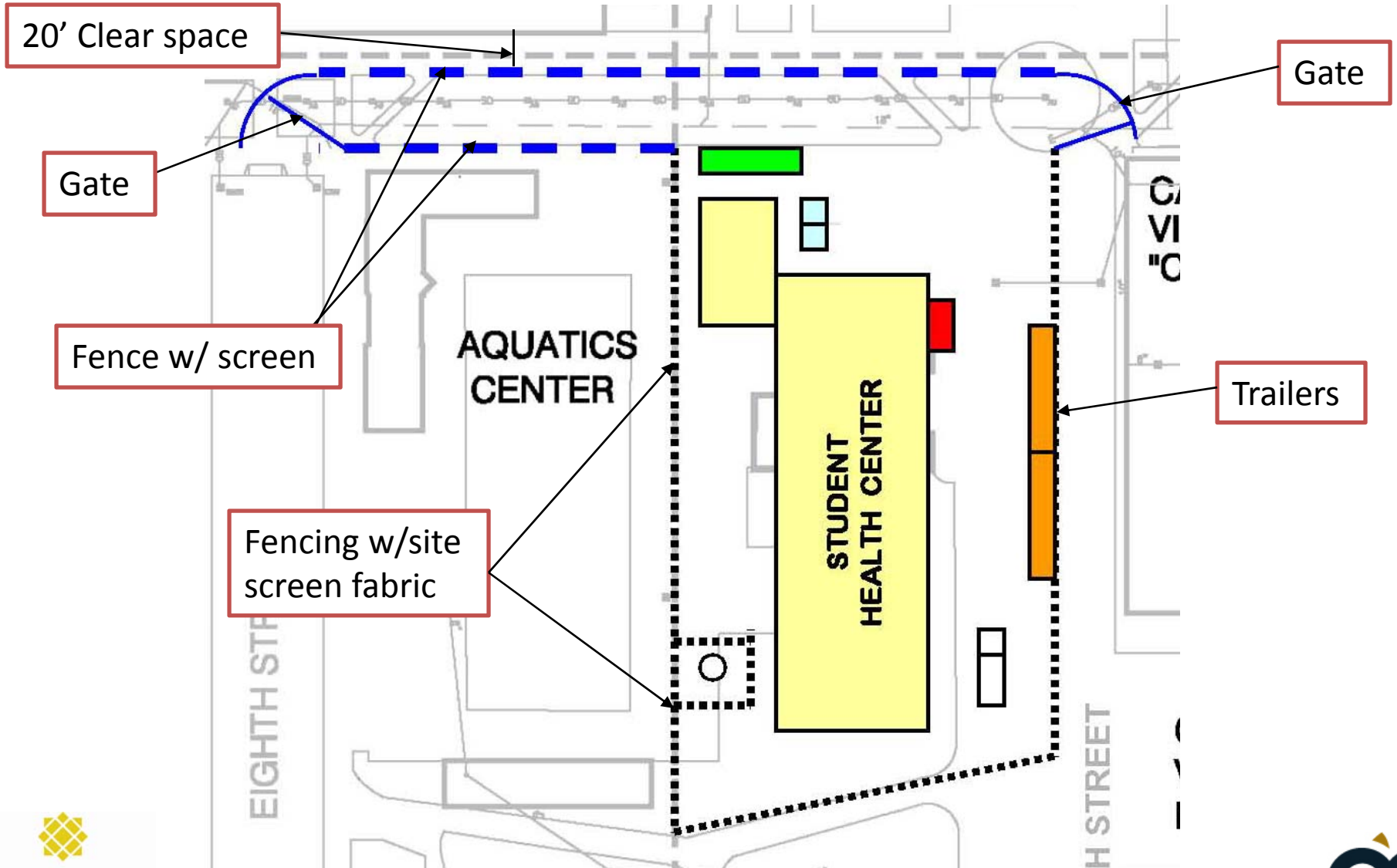
# Construction Traffic Flow



# Construction and Pedestrian Flow



# Construction Site





**SAN JOSÉ STATE**  
UNIVERSITY

Thank you

