

Biosafety Cabinet (BSC) Operation

Before Using BSC

Make sure that the BSC has been certified in the past 12 months.



Run ventilation for >2 min to clear stagnant air before use.



Disinfect all surfaces of the BSC using approved disinfectant.



Gather all needed materials inside the BSC to limit work interruptions and minimize entering or exiting the BSC.

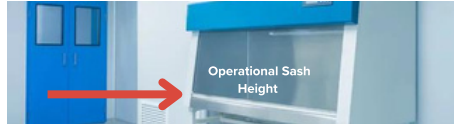


Make sure that your seat is properly adjusted so that you're working at a comfortable height.



When Using BSC

Do not exceed the sash level indicated on the side.



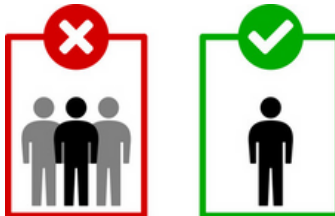
Limit movement in and out of the BSC.



Place items >6 inches into cabinet, parallel to front grate, from clean-to-dirty.



Restrict use of the cabinet to one person at a time.

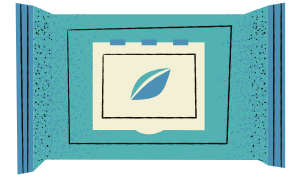


Never use an open flame inside the BSC



After Using BSC

Wipe down equipment and supplies with disinfectant wipes prior to removing them from the BSC.



Disinfect gloves before removing hands from BSC.



Place all solid and liquid waste in appropriate waste containers.



When the BSC is empty, disinfect work surfaces, interior walls, and window with appropriate disinfectant.



Wash you hands, turn off the light, and close the window sash.

