



# GET INVOLVED @ SJSU

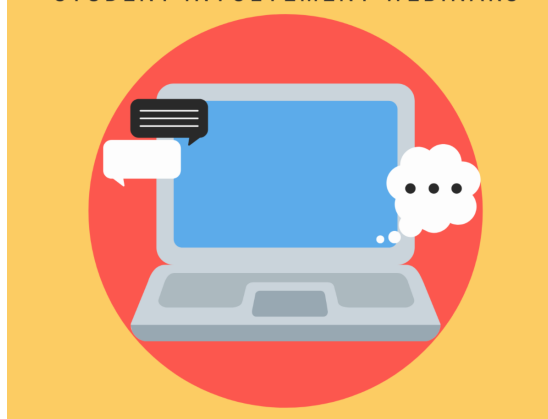
CAMPUS  
PROGRAMING

FRATERNITY &  
SORORITY LIFE

LEADERSHIP  
DEVELOPMENT

RECOGNIZED  
STUDENT ORGS

## STUDENT INVOLVEMENT WEBINARS



Do you want to learn more about Student Involvement and student life at SJSU?  
Attend one of our upcoming webinars:

### Life as a Spartan

- Monday, June 29 at 4:00pm ([Registration Link](#))
- Monday, July 27 at 4:00pm ([Registration Link](#))

### Fraternity & Sorority Life at SJSU

- Monday, July 6 at 4:00pm ([Registration Link](#))
- Monday, August 3 at 4:00pm ([Registration Link](#))

These webinars are geared towards new Spartans, but any student who is looking for ways to get engaged on campus could benefit from attending!

---

## STUDENT INVOLVEMENT UPDATES

---

# OVER 450 RECOGNIZED STUDENT ORGANIZATIONS



ACADEMIC • CLUB SPORTS • CULTURAL/RELIGIOUS • FRATERNITY/SORORITY • SPECIAL INTEREST • UNIVERSITY SPONSORED

San José State University recognizes over 450 student organizations. Students are encouraged to participate in one of the many clubs as this is the best way to connect with campus life!

## START A NEW STUDENT ORGANIZATION

Can't find a group that fits your interests? It's easy to start a new organization at SJSU! To become a student organization, all groups must go through the New Org Recognition process to be officially Recognized at San José State University and be able to take advantage of University resources and facilities.

Learn more at one of our Q&A sessions in August and September. Sign up at [bit.ly/SJSUFALL2020NEWORG](https://bit.ly/SJSUFALL2020NEWORG).

### Start a New Organization

### Q&A Sessions

### Fall 2020

THURSDAY 8/20 12PM-1PM  
THURSDAY 9/3 12PM-1PM  
WEDNESDAY 9/16 12PM-1PM

SIGN UP VIA FORM BELOW FOR  
ZOOM LINK!

[BIT.LY/SJSUFALL2020NEWORG](https://bit.ly/SJSUFALL2020NEWORG)



## VIRTUAL STUDENT ORGANIZATION FAIR

SJSU | STUDENT INVOLVEMENT

# SJSU FALL 2020 VIRTUAL ORG FAIR SAVE THE DATE

**TUESDAY, SEPTEMBER 1ST**

**STAY TUNED FOR DETAILS  
ON HOW TO PARTICIPATE!**

Questions? Contact us at  
[studentorgs@sjsu.edu](mailto:studentorgs@sjsu.edu)

Save the date!

Tuesday, September 1

Details on how to participate coming soon!

## JUNE FEATURE FRIDAYS

This summer, we launched our new Feature Friday series, spotlighting a different recognized student organization on social media every week. RSOs were invited to submit their organization for this series, and we randomly select one each week. In case you missed our posts, here are the orgs that were featured in June!

### Women Wellness Club

The Women Wellness Club was our very first Feature Friday! Founded at SJSU in 2019, this recognized student organization promotes leading a healthy lifestyle, networking, and building positive social communities. One member's favorite part of the organization is the ability to connect with SJSU students, community members, and local business owners while learning about different self-care methods. This year, the Women Wellness Club donated twice to Nextdoor Solutions to Domestic Violence, a local Santa Clara County agency. Want to get involved? Email [wwsjsu@gmail.com](mailto:wwsjsu@gmail.com) or visit their website

<https://wwsjsu.wixsite.com/womenwellness>.

Follow them on Instagram @sjsu\_ww.



### Hmong Student Association

Our next Feature Friday was the Hmong Student Association (HSA). This organization has been bringing awareness of Hmong culture to SJSU since 2011! In addition to building awareness, HSA provides an outlet for students on campus. Members take pride in how close the organization is, sharing that they love "getting to know and bond with everyone" and that HSA is "the closest thing to family that you will have while being away for college." Want to learn more about the Hmong Student Association? Contact the student leaders on the SAMMY App @ Hmong Student Association or on Facebook @ HSA SJSU!

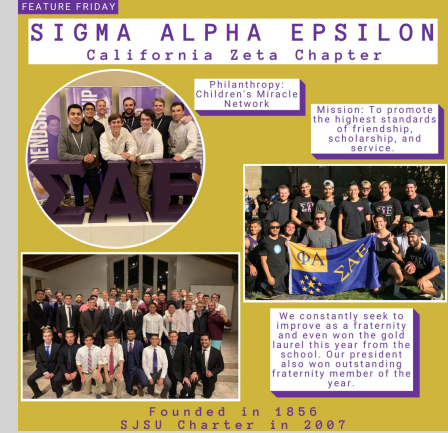


### Sigma Alpha Epsilon

June's final Feature Friday is Sigma Alpha Epsilon, California Zeta Chapter! Members describe the fraternity's mission as "to promote the highest standards of friendship, scholarship and service for our members based upon the ideals set forth by our Founders and as specifically enunciated in "The True Gentleman"." They also highlighted that Sigma Alpha Epsilon seeks to ensure that members understand



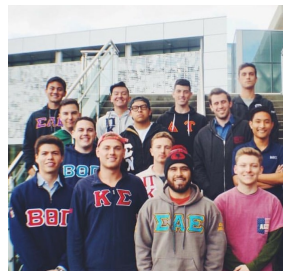
that diversity, in its many forms, is understood, respected and valued. Philanthropy is highly valued by the chapter, which supports the Children's Miracle Network. Follow @saesjsu on Instagram and Twitter to see what the chapter is currently doing!



## FRATERNITY & SORORITY LIFE

Fraternity & Sorority Life, also known as Greek Life, is a community of men's and women's organizations that support personal growth and development. Many of these fraternal organizations use Greek letters, hence the term Greek Life. These organizations are rooted in values of siblinghood, scholarship, philanthropy, friendship, and leadership. SJSU is home to over 40+ social fraternities and sororities.

During the 2019-2020 school year, fraternities and sororities welcomed 624 new members!



**Tune into one of our upcoming Informational Webinars to learn more:**

Monday, July 6th at 4:00pm PST

Registration link:

[https://sjsu.zoom.us/webinar/register/WN\\_YwEdbjFERhqA285gxREUCa](https://sjsu.zoom.us/webinar/register/WN_YwEdbjFERhqA285gxREUCa)

Monday, August 3rd at 4:00pm PST

Registration link:

[https://sjsu.zoom.us/webinar/register/WN\\_AXL\\_ZqlTTe2\\_rOhlBmJecw](https://sjsu.zoom.us/webinar/register/WN_AXL_ZqlTTe2_rOhlBmJecw)

### FALL 2020 RECRUITMENT

Chapters and their respective councils are working to share out more information regarding recruitment opportunities for Fall 2020. Learn more:

<https://www.sjsu.edu/getinvolved/greek-life/join.php>

Follow @sjsu.greeks on instagram or email [fraternities-sororities@sjsu.edu](mailto:fraternities-sororities@sjsu.edu) with any questions!



### ***National Pan-Hellenic Council Recruitment***

National Pan-Hellenic Council is the coordinating body to eight of nine historically Black/ African- American international greek-lettered organizations inclusive of fraternities and sororities. They are colloquially known as the Divine Nine.

*Organizations present at SJSU include:* [Alpha Phi Alpha Fraternity, Inc.](#), [Alpha Kappa Alpha Sorority, Inc.](#), [Kappa Alpha Psi Fraternity, Inc.](#), [Omega Psi Phi Fraternity Inc.](#), [Delta Sigma Theta Sorority, Inc.](#), [Phi Beta Sigma Fraternity, Inc.](#), [Zeta Phi Beta Sorority, Inc.](#), [Iota Phi Theta Fraternity, Inc.](#)

You can follow NPHC on instagram: [@sjsunphc](#)

Complete the [Interest & Eligibility Form](#) (requires SJSU Tower ID Number).

### ***United Sorority & Fraternity Recruitment***

The United Sorority and Fraternity Council (USFC) was established in 2003 with culturally based fraternal organizations. These include Latinx-Interest, Asian-Interest, and Multicultural-Interest organizations. Sororities include: [alpha Kappa Delta Phi Sorority, Inc.](#), [Alpha Kappa Omicron](#), [Lambda Sigma Gamma Sorority, Incorporated](#), [Lambda Theta Alpha Latin Sorority, Incorporated](#), [Sigma Alpha Zeta Multicultural Sorority](#), [Sigma Omega Phi Multicultural Sorority, Incorporated](#), [Sigma Pi Alpha](#), [Sigma Theta Psi Multicultural Sorority Incorporated](#). Fraternities include: [Alpha Kappa Omega](#), [Gamma Zeta Alpha Fraternity, Inc](#), [Lambda Theta Phi Latin Fraternity Incorporated](#), [Nu Alpha Kappa](#), [Sigma Delta Alpha, Fraternity Inc.](#), [Sigma Lambda Beta International Fraternity Inc.](#), and [Zeta Chi Epsilon](#).

You can follow USFC on instagram: [@sjsu\\_usfc](#)

Complete the [Interest & Eligibility Form](#) (requires SJSU Tower ID Number).

### ***Interfraternity Council Recruitment***

Interfraternity Council (IFC) is the governing organization of general-interest fraternity organizations. SJSU organizations include: [Alpha Epsilon Pi](#), [Alpha Sigma Phi](#), [Alpha Tau Omega](#), [Beta Theta Pi](#), [Delta Sigma Phi](#), [Delta Upsilon](#), [Kappa Sigma](#), [Sigma Alpha Epsilon](#), [Sigma Chi](#), and [Theta Chi](#).

You can follow IFC on Instagram: [@sjsuinterfraternity](#)

Complete the [Interest & Eligibility Form](#) (requires SJSU Tower ID Number).

### ***Panhellenic Council Recruitment***

Panhellenic Council (PHC) is the governing organization of six sorority organizations, including: [Alpha Omicron Pi](#), [Alpha Phi](#), [Alpha Xi Delta](#), [Delta Gamma](#), [Delta Zeta](#), and [Kappa Delta](#). These organizations will recruit new members this fall semester through a virtual recruitment experience.

You can follow PHC on Instagram: [@sjsupanhellenic](#)

The registration link for the primary virtual recruitment experience will go live by July 1st. Panhellenic Virtual Recruitment Registration Link:

<https://enroll.icsrecruiter.com/pan/SJSUNV>



# Spartans Lead

The out-of-the-classroom experience is a vital part in a student's development and we assure you that leadership isn't always about holding a position nor do you have to be on the upper level of some group to be able to practice your leadership skills. Want to build your leadership skills? Check out our [website](#) for more information on what our leadership team can offer you.

---

## UPCOMING LEADERSHIP OPPORTUNITIES

Stay tuned for great opportunities next year, including our Emerging Leaders Program for new students, the National Society for Leadership and Success to get access to a national network of leaders and lifetime benefits, and the Spartan Leadership and Career Conference on October 9th to hear from employers, alumni, and SJSU staff and student leaders! We will also have many leadership workshops throughout the year, so stay tuned for more information

---

## DIGITAL LEADERSHIP RESOURCES

Summer may be here, but that doesn't mean you can't continue to build leadership skills! We have uploaded documents, worksheets, links, and other resources to a Google Classroom hub for you to access at your convenience! If you want to revisit any of the resources from our Spring 2020 workshops and drop-ins, please visit [this website](#) and enter our classroom code: **3iupdiu**. You must **use your SJSU login credentials** to access the page!

If you have questions or want to explore these topics further, reach out via email at [student-leadership@sjsu.edu](mailto:student-leadership@sjsu.edu)!

---

## WE WANT TO GET TO KNOW OUR READERS!

Please share your affiliation with SJSU.

Undergraduate Student

Select

Graduate Student

Select

**Alumni**

**Select**

**Parent or Family Member of SJSU Student**

**Select**

**Faculty**

**Select**

**Staff**

**Select**

**Other**

**Select**

---

What content are you most interested in reading in our newsletter?

**Information about Recognized Student Organizations**

**Select**

**Information about Fraternity & Sorority Life**

**Select**

**Leadership Development Opportunities**

**Select**

**Campus Events**

**Select**

**Weeks of Welcome**

**Select**

**Campus Resources & Student Support**

**Select**

---

## CAMPUS RESOURCES & PROGRAMS

---

**SJSU SAMMY APP**





Download the SJSU App (Sammy App) to your smart phone or tablet for a full list of upcoming events. Explore the student feed, student organizations, and campus events! Download our app on the [Apple Store](#) or [Google Play](#).

---

## **COUNSELING & PSYCHOLOGICAL SERVICES (CAPS)**

CAPS continues to operate all services remotely. CAPS will operate on summer hours from May 25-August 14. Summer business hours are Monday-Friday 8:30am-4:30pm.

For more information, please call (408) 924-6122. Services are being provided either by phone or video conference, utilizing Zoom Health for video sessions - a secure, encrypted, HIPAA compliant service.

After-hour crisis intervention services continue to be available by calling the main line at (408) 924-5910, and selecting option 4.

---

## **SPARTAN FOOD PANTRY SUMMER HOURS**

- Mondays 11:00am-4:00pm
- Tuesdays 11:00am-3:00pm
- Wednesdays 11:00am-3:00pm

Not sure if you're eligible this summer?

- Experiencing Hunger/Food Insecurity
- Must be a continuing student (i.e. were enrolled in Spring 2020 OR Summer 2020 AND enrolled in Fall 2020)
- Must bring Tower ID Card
- Must earn a gross annual income of \$33,348\* or less (no documentation required)



---

## **MOSAIC CROSS-CULTURAL CENTER VIRTUAL OFFICE HOURS**

The MOSAIC Cross-Cultural Center staff will be hosting virtual office hours this summer!





Join them every other Thursday in June and July from 5:00pm-6:00pm, beginning on June 4.

[bit.ly/mosaicofficehours](https://bit.ly/mosaicofficehours)

## WRITING CENTER SUMMER HOURS

The Writing Center will be open for business over the summer from June 1 to August 7! The following services will be offered:

- 45-minute online tutoring sessions (Zoom)
- 15-minute live chat "Ask a Tutor"
- Online downloadable resources

[Learn more at the Writing Center website!](#)



## CAREER CENTER PROGRAMS

### Virtual Career Coaching

In need of quick career tips? Career counselors can provide advice about job/internship search strategies, interviewing tips, grad school, enhancing your resume, and more.

### New Grad Career Bootcamp

- Friday, July 15
- 12:00pm-1:30pm
- [Register via Handshake](#)

## ATHLETICS FEATURES

### Spartan "Interview in Place" Videos:

- [Coach Jamie Craighead](#) (Women's Basketball)
- [Coach Lauren Hanson](#) (Women's Soccer)
- [Coach Brad Sanfilippo](#) (Baseball)
- [Coach Jean Prioleau](#) (Men's Basketball)
- [Coaches Dana Dormann & John Kennaday](#) (Men's and Women's Golf)

- [Coach Bruce Watson](#) (Men's Water Polo)

**Spartan Rewind (broadcast past games with commentary from coaches and players):**

- [2012 Military Bowl](#)
- [Men's Basketball vs Nevada](#)
- [Softball 2017](#)
- [Women's Basketball vs Boise State](#)
- [73rd Western Intercollegiate Golf Tournament](#)
- [2000 College World Series](#)

**Spartan Spotlight Podcast**

- You can find our podcast on the Apple podcast app [here](#) or through listennotes [here](#)!

---

## **HILLEL OF SILICON VALLEY**

We're Hillel of Silicon Valley, the hub for Jewish student life at SJSU! The Jewish Student Union and Students Supporting Israel to bring Jewish and Israel programming to you - cost-free and student-led. If you're looking for a Shabbat dinner, we've got you! Curious about Birthright or other trips to Israel? Looking for a quiet place to study, get a snack, or meet some friends? We host social events and Jewish holiday parties - everyone is welcome! We are proud to foster a pluralistic environment where everyone has a place - we welcome students of all backgrounds, faiths, and abilities. To learn more about us, visit our Instagram (@hillel\_silicon\_valley) and our Facebook page (HillelSV). For more information, please email our Program/Engagement Associate Leanna, at [LParsons@hillelsv.org](mailto:LParsons@hillelsv.org). We look forward to meeting you!

---

Student Involvement | 408.924.5950 | 1400 Student Union |  
[@SJSUgetinvolved@sjsu.edu](mailto:@SJSUgetinvolved@sjsu.edu)



Share



Tweet



Share