



IS 233 Phototable Guide

The phototable is made to shoot objects up to about the size of a watermelon, maybe two watermelons if well-positioned. The three different backgrounds are made of formica and are reasonably tough. That said, they can be scratched, so use care when placing objects that have unfinished bases onto the background material. A soft damp rag, available from the tool room, can be used to wipe dust off the backgrounds.

When you are done with the table, return any items checked out, to the tool room. It is not necessary to change the background back to what was previously in place. If any litter was created during your shoot, please make a point to throw it in the room waste can.

I made this setup to be as simple as possible.

Setup #1

It is daylight outside, but no direct sun is falling on the shooting table.

1. Open the shades to the right of the table
2. Place object on table
3. Using a decent smart phone camera or other device, take the image
4. If you are getting weird color, try shutting off the overhead lights
5. A white reflector card may be needed to bounce light from the windows onto the left side of the work.

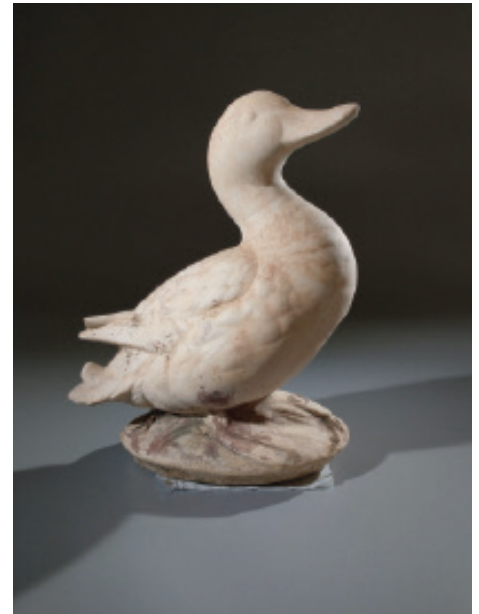


Overhead lights may need to be turned off if color weirdness is occurring.

Setup #2

It is daylight outside, but shades are drawn and the LED light kit is being used.

1. Draw the shades or work in the evening after sunset
2. Checkout the LED light kit front the tool room
3. Use the stands, taking care not to pinch your hands, to hold the lights. There are light stands in the kit as well.
4. Position the lights in such a way as to illuminate the piece in the desired manner, this will take trial and error.
5. Adjust the brightness of the LED lights to provide the modeling you wish. Please note the color temp can be changed as well. For daylight, use 5000K-5500K. This is especially important if you are also using light from the outside.
6. Take your photo and adjust lights as necessary



Setup #3

It is daylight outside with indirect sun coming through the window and the shades are open and you are using the LED light kit.

1. Checkout the LED light kit from the tool room
2. Use the stands, taking care not to pinch your hands, to hold the lights. There are light stands in the kit as well.
3. Position the lights in such a way as to illuminate the piece in the desired manner, this will take trial and error.
4. Adjust the brightness of the LED lights to provide the modeling you wish. Please note the color temp can be changed as well. For daylight, use 5000K-5500K. This is especially important if you are also using light from the outside.
5. Take your photo and adjust lights as necessary.

