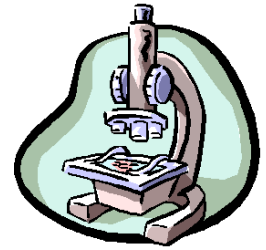


Justice Studies Department
San Jose State University
Spring 2008
Class hours Mon/Wed 1030--1145
Room: MH 520

Instructor: Mary Juno
Office Hrs: M/W 12-1
Email: junos68@yahoo.com
Office: MH 521



Class Website:

http://www.sjsu.edu/faculty_and_staff/faculty_detail.jsp?id=1811

JS 113

Introduction to Forensic Sciences

Course Description:

Scientific concepts, methods, practice and analytical instrumentation utilized by forensic scientists for the recognition, collection, preservation, identification, comparison, analysis and documentation of physical evidence. Topics include evidence interpretation and testimony, professional requirements, standards, training, ethics and quality assurance.

Course Text and Materials

Required Text:

- ***Criminalistics: An Introduction to Forensic Science, 9th Ed. 2007.***
Richard Saferstein. ISBN 0-13-221655-8. Pearson Prentice Hall.

Course Format

The course will include lectures by the instructor, class discussions, powerpoint presentations, films, and lab exercises. Text will be supplemented with documents posted on the class website.

Course Requirements

- **Exams (2x100 pts):** Two exams will be given in this course. Exams will be cumulative and will include all material covered up to the date of the exam. Exams may include multiple choice, matching, true/false, diagrams, drawings and sketches, and short essay.

Midterm Monday March 17
Final Tuesday May 20, 945-12

- **Homework (150 pts):** There will be 15 weekly homework assignments during the term, worth 10 points each. These will consist of the review questions at the back of each chapter of the text. Homework **MUST** be in hardcopy format - *no email submissions will be accepted, and no late homework will be accepted for any reason.*
- **Presentation (25 pts):** Each student will give a brief (5~10 minute) powerpoint presentation on a subtopic of forensic science, approved by the instructor and of particular interest to the student.
- **DNA exercise (25 pts):** Each student will complete a mass disaster DNA exercise/paper determining familial relationships among disarticulated recovered body parts.

- **Laboratory Exercises (100 pts):** There will be 5 lab exercises during the semester. These will include Glass Reconstruction, Hairs & Fibers, Chromatography, Presence of Blood & Semen, & Latent Fingerprint Development. Each of these exercises will be carried out in teams. Project materials will be due for each exercise. Details of format and grading will be provided. Grading in general includes the following considerations:

** Were all directions followed? * Is the work presented neatly or sloppily? * Are team members and team numbers all listed on the team report? * Is the documentation complete? * Are all questions answered? * Do answers show thoughtfulness and a solid grasp of the material? * Are the reports organized and well presented? * Is the writing clear, legible, and understandable? * Are all pages stapled together? * Are data accurate? * Does the data support statements and conclusions in the report? * Are the statements within the report and between team members consistent? If not, are discrepancies explained? * Is the detail provided sufficient and understandable for court?*

A note about writing..

Students have differing writing talents, abilities and skills. At the college level, you should be able to express yourself in writing clearly, concisely, and effectively, without grammar, punctuation or spelling errors. Any job you seek in this field will expect no less of you! The SJSU Writing Center (126 Clark Hall) provides free workshops and tutoring to help writers of all skill levels. Your writing assignments for this class will be graded for content as well as clear and correct expression, so please remember to:

- Spell check
- Proofread
- Be sure your answer fully addresses the question being asked
- Use proper APA citation format when necessary

Grading

Homework (15x10pts)	150 points
Labs (5x20pts)	100 points
Presentation	25 points
DNA paper	25 points
Midterm exam	100 points
<u>Final exam</u>	<u>100 points</u>
Total Possible	500 points

Grades/Points

A=450-500	C=350-399	F=<300
B=400-449	D=300-349	

Extra Credit

Extra credit assignments will be announced in class and posted on the class website.

Make-ups

No late work will be accepted without prior approval from instructor. If you know ahead of time that you will miss a day when an assignment is due, either turn it in early, have a classmate turn it in for you, date-stamp it in the JS office and put it in my box, or make other arrangements with me - *prior* to missing the class. Make up exams will generally not be given except under extraordinary, documented circumstances. Make-ups for the final will not be granted.

Class Participation is encouraged and expected. You will be evaluated based upon your contributions to the class. It is essential that you come prepared to participate so keep up with the reading and plan to speak up! Your participation or lack thereof can augment or diminish your overall grade in the class.

Tips for Success

Here's how to get an A... Come to class, take good notes, do the readings, ask questions when you don't understand, come to office hours for help, take advantage of extra credit, ask a friend to take notes for you if you can't make it to class, participate in discussions, and study for quizzes and tests with a friend or in a group. That's all you gotta do!

Instructor

Mary Juno holds a MS in Forensic Science from the University of Strathclyde (Glasgow, Scotland), and a BA in Forensic Anthropology (San Francisco State University). Juno has worked as a CSI at the Oakland Police Department since 2000, and has processed hundreds of major crime scenes. She has taught in the Oakland Police Academy and substituted at City College SF.