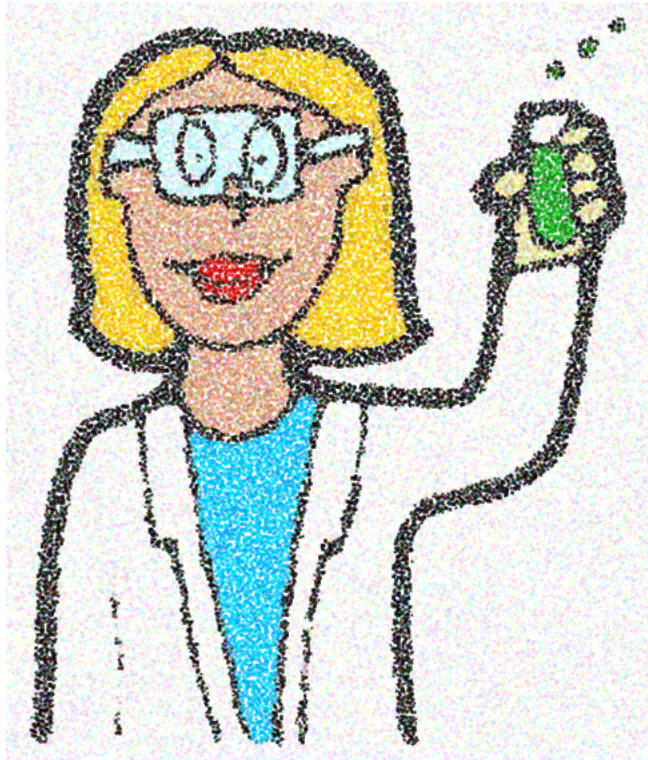


PHIL 133 section 01, “**Ethics in Science**”  
TR 1330-1445 in BBC 222  
Fall 2019

Janet D. Stemwedel  
janet.stemwedel@sjsu.edu



What does it take to be an ethical scientist in a world that includes lots of non-scientists?

How do values play a role in the practice of science?

How do history and culture shape what counts as good scientific practice?

How do matters like choice of research question, experimental design, relationships within lab groups, and strategies for communicating findings reflect the values of the scientific community?

**Prerequisites:** Passage of the Writing Skills Test (WST) or ENGL/LLD 100A with a C or better (C- not accepted), completion of Core General Education and upper division standing. Completion of, or co-registration in, 100W is strongly recommended.

**GE area V**

**Fall 2019 enrollment is “by permission” (email instructor for add code).**