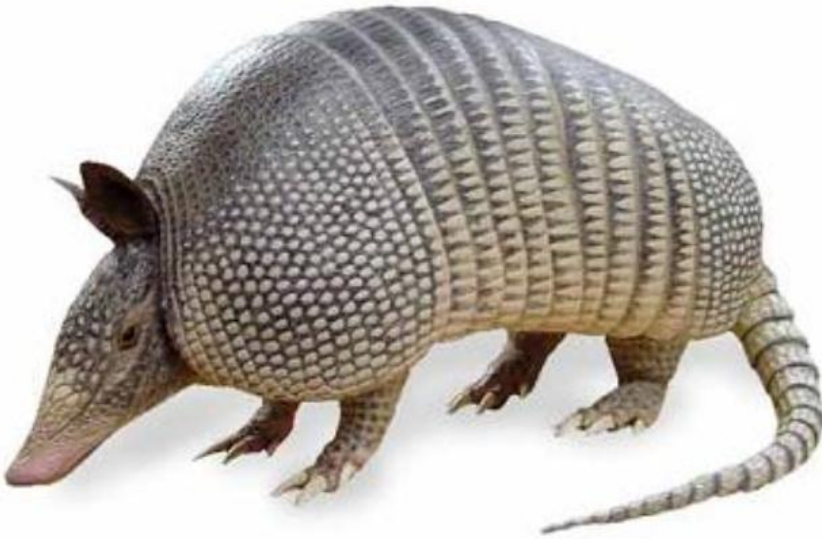


**San Jose State University/Department of Biological Sciences**

**Fall 2011**

**Zoology 160:  
Zoogeography**

**Mondays 5 to 8 p.m. starting August 29  
Duncan Hall 549**



Zoogeography examines the patterns of animal biodiversity over space and through time. We use data and models from a variety of sources including zoology, ecology, evolutionary

biology, paleontology, and geology to examine why, for example, monkeys are so prevalent in Africa but completely absent in Madagascar, or why North America is home to a single species of marsupial while these pouched mammals are more common in South America and especially in Australia. What is responsible for these distributions? Ecology? Geology? Historical accident? Maybe all of the above – and more! This course is an upper division elective for biology majors, but is open to students in other disciplines (geography, geology, environmental studies, anthropology, science education, etc.) who are interested in joining us for this fascinating and often controversial look at animals across time and space.

Instructor: Dr. Elizabeth McGee

For more information, email [elizabeth.mcgee@sjsu.edu](mailto:elizabeth.mcgee@sjsu.edu).