

# 2017/18 Annual Budget Report



## SPARTANS

SAN JOSÉ STATE UNIVERSITY

Charlie Faas

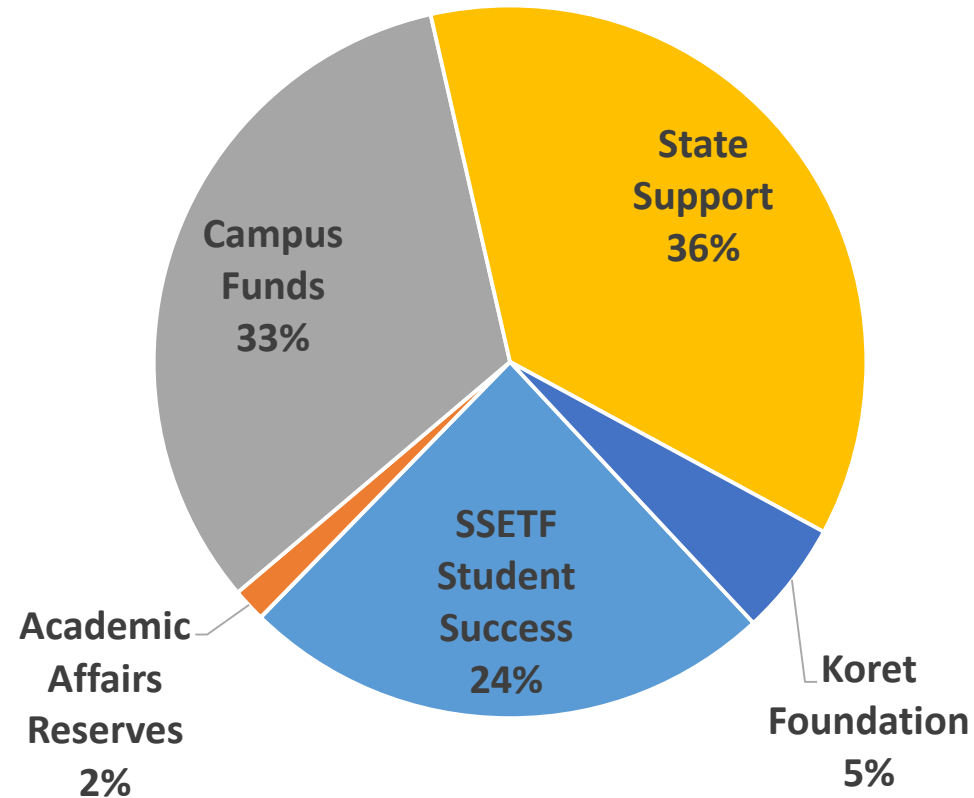
VP Administration & Finance/CFO

- Increase in tuition and General Fund appropriation
  - Tuition rate increase (\$270, 4.9% increase)
  - +240 funded FTES
- CSU Budget Adjustments \$20M
  - Funded enrollment growth \$2.6M
  - GI 2025 \$3.5M
  - Student Aid \$2.2M
  - Mandatory Costs, Compensation, & Benefits \$12.0M
- Operating base budget \$357M
  - +\$22M over FY1617 budget of \$335M
- SJSU Total Operating Budget \$625M
  - +\$25M over FY1617 budget of \$601M
- Internal budget process: base vs. one-time, three-year outlook

## ■ Graduation Initiative 2025 - \$10.8M

- Advising (\$5M)
- Clearing Bottlenecks (\$2M)
- College Readiness (\$2M)
- Student Engagement (\$1M)

GI 2025 Support Sources  
2015/16 -2017/18 (\$25M)



- **Campus Safety and Security Enhancements**
  - University Police Department staffing and operations (\$913K)
  - MLK Library atrium project (\$1.5M)
  - Housing fire life safety projects (\$4.5M)
  - Parking cameras (\$310K)
  - Classroom clocks (\$600K)

- **Planning and Economic Development**
  - New Interdisciplinary Science and Innovation Building (\$1.5M)
  - Space management and planning (\$400K)
  - Campaign staffing and operations (\$600K)
  - Hammer Theatre (\$1.35M)
  - Welcome Center (\$145K)

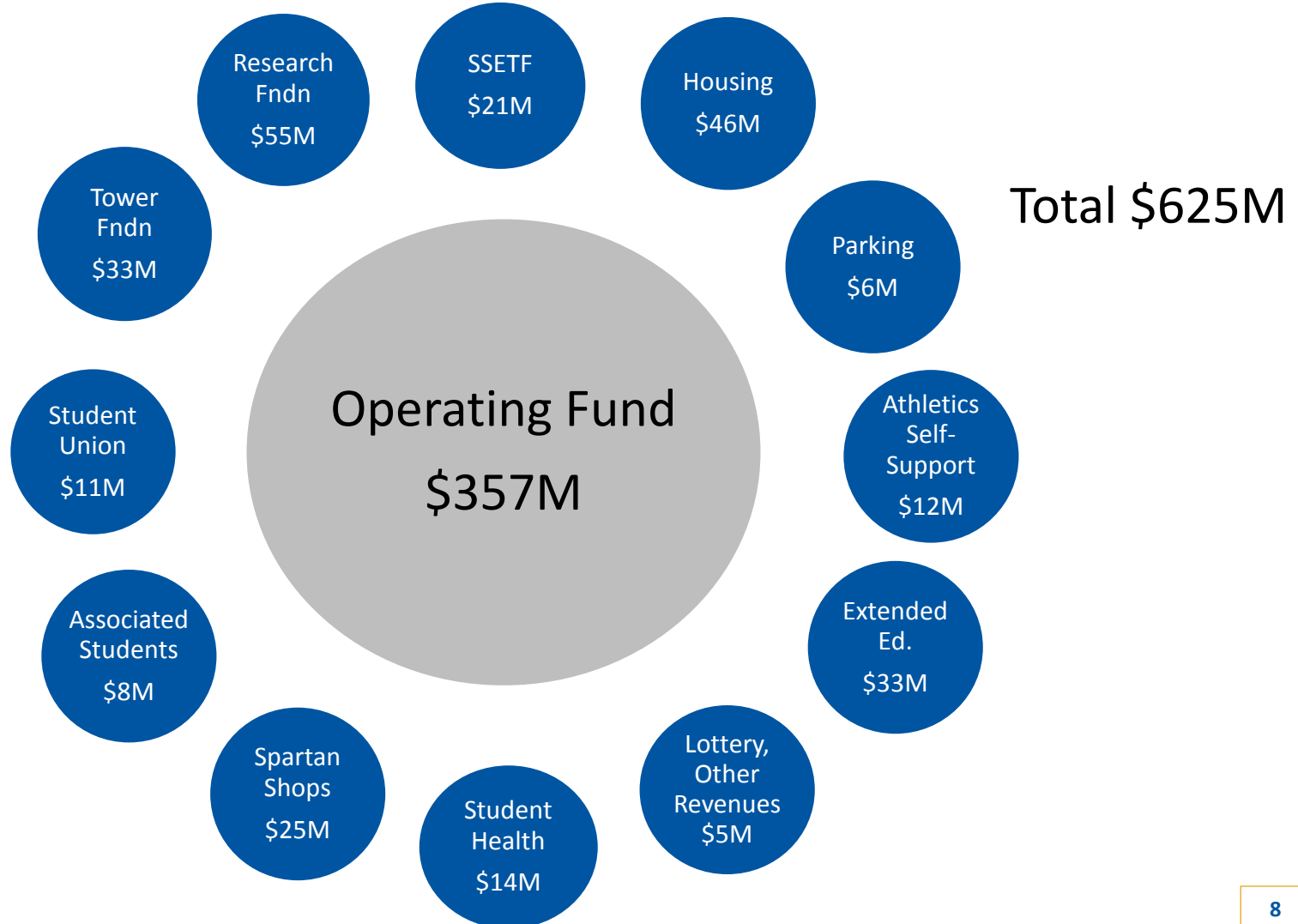
- **Continually Funding Deferred Maintenance and Capital Improvements**
  - Continued focus on aging infrastructure (\$2.3M)
    - DMH
    - HGH restrooms (\$150K)
    - Concrete repairs (\$760K)
  - Engineering Building Restroom, Elevator (\$1.1M)
  - Fire alarm upgrades (\$600K)

- **Externally Funded Projects**

- CIES Space in Student Union
  - Non General Fund
- Spartan Golf Complex
  - Donor funded
- South Campus Plan: Softball, Tennis Complex, Track and Field
  - Donor / Student Union funded

- **Ongoing Major Capital Projects**

- Student Recreation & Aquatic Center (\$132M)
  - Student Union fees
- Interdisciplinary Science and Innovation Building (\$148M)
  - CSU funded with campus contribution required



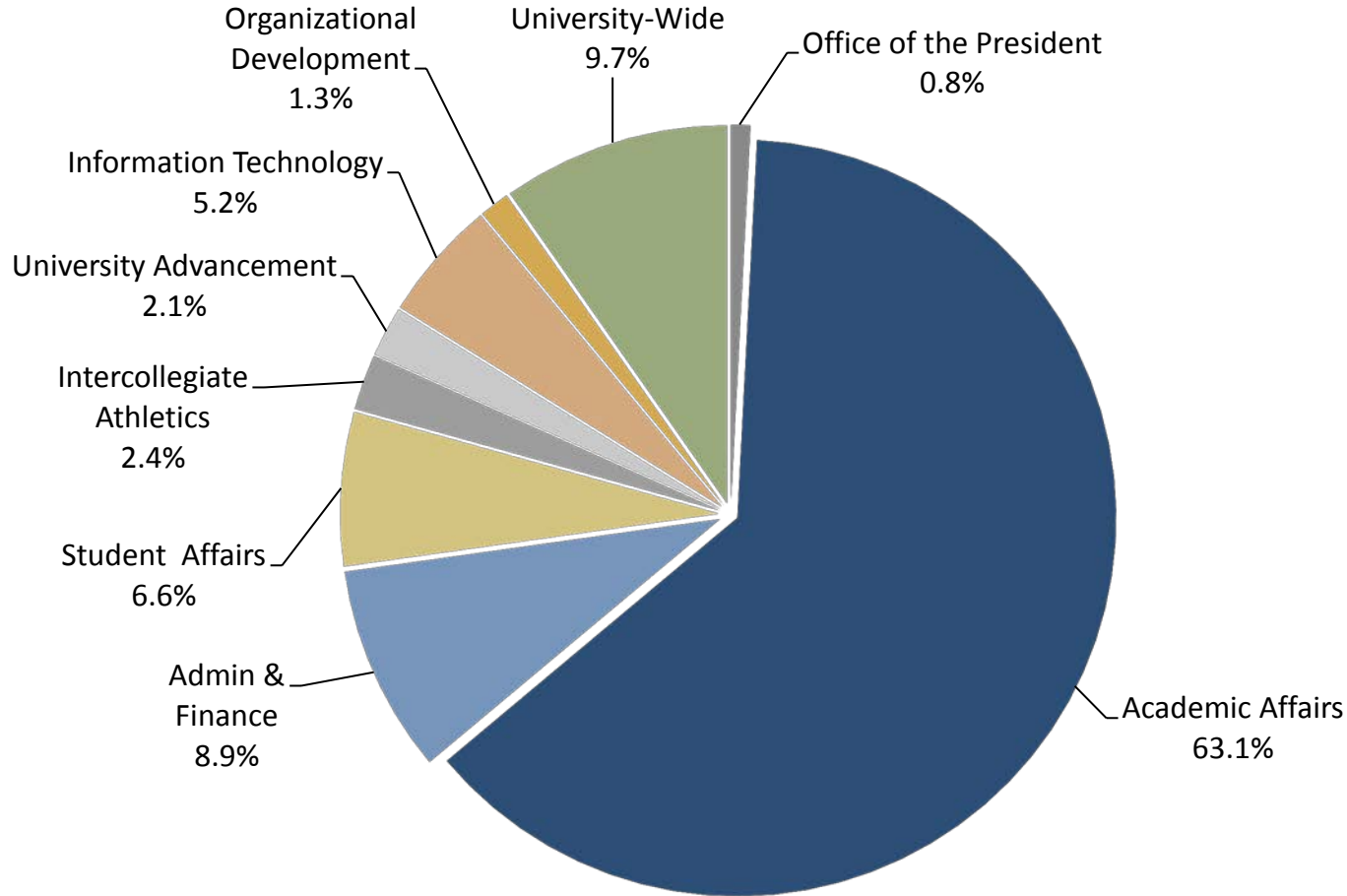
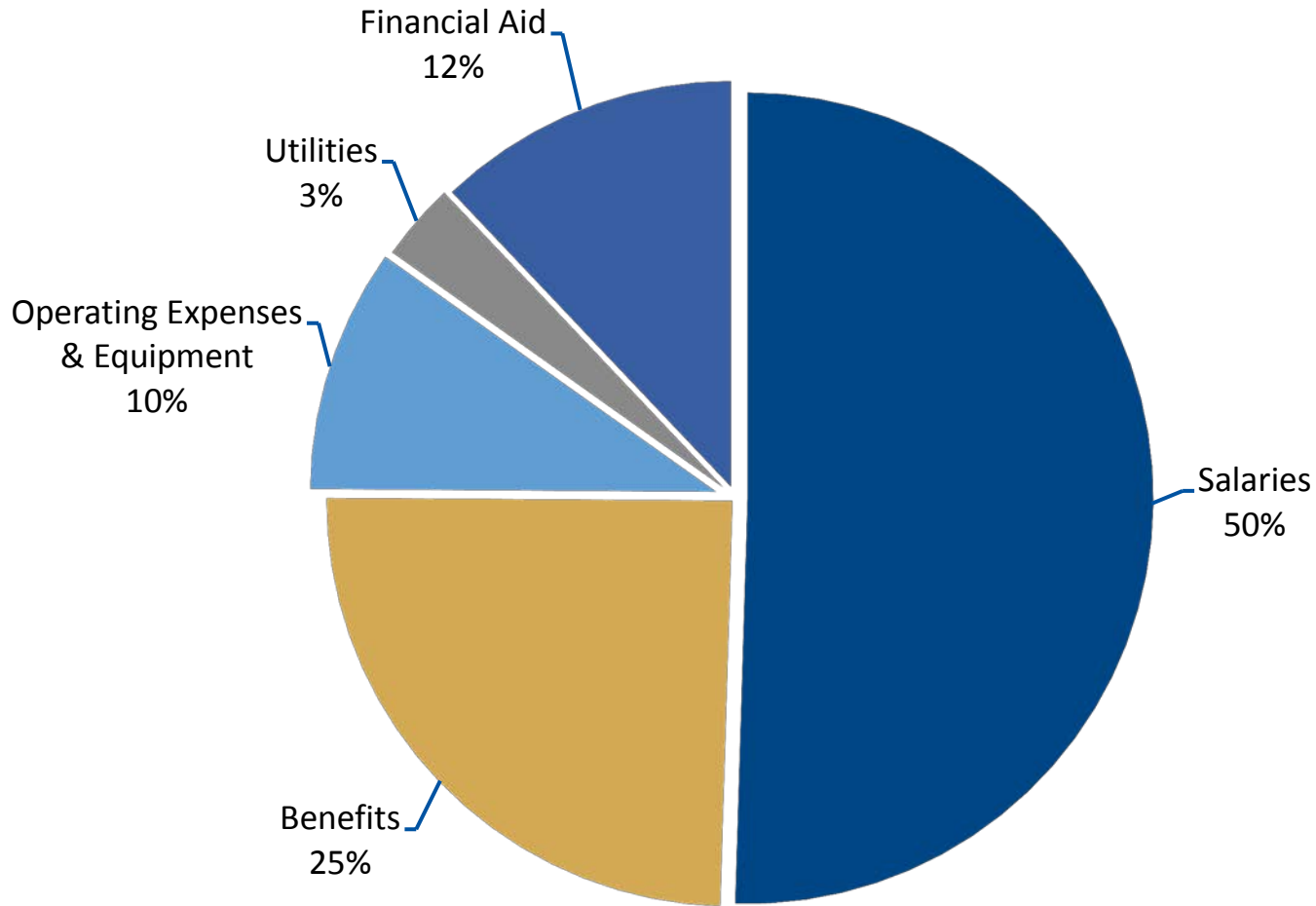


Chart above displays the breakdown of the Operating Fund Base expenditure budget. Budget excludes Restricted Student Aid (primarily a U-Wide tuition discount). Consistent with FY16/17 chart, the benefits are distributed across Divisions. Intercollegiate Athletics does not include one-time funding as reported last year. More details are available in the Annual Budget Report (p. 8).



For more information, visit:

[http://www.sjsu.edu/finance/about\\_us/budget/budget\\_reports/](http://www.sjsu.edu/finance/about_us/budget/budget_reports/)

[http://www.sjsu.edu/adminfinance/about/budget\\_central/](http://www.sjsu.edu/adminfinance/about/budget_central/)

<http://www.sjsu.opengov.com>

SAN JOSÉ STATE UNIVERSITY *powering* SILICON VALLEY



# Appendix



# SPARTANS

SAN JOSÉ STATE UNIVERSITY

## ■ Revenue Sources

- Operating Funds, SSETF-IRA, Ticket sales, conference distribution, game guarantees, NCAA distribution and development

## ■ Functions

- Supports operating and travel costs for all sports
- Grants in Aid for student-athletes

## ■ Highlights / Accomplishments

- Spartan Golf Complex facility on South Campus
- Establish on the University's tradition of academic & athletic excellence
- Recruit and retain top athletes by providing financial incentives through scholarship

### Revenue Sources

- Student Health & Health Facility Fees
- Fee-for-service

### Functions

- Support and provide student health & mental health services
- Promote health and well-being of student community

### Highlights / Accomplishments

- Student Health & Wellness Center
- Increased Counseling & Preventative Health support

## Revenue Sources

- Housing Rent and Fees
- Other Lodging and Conference Fees
- Rent for Dining Commons and Village Market

## Functions

- Support housing operations & programs

## Highlights / Accomplishments

- Over 4,000 residents
- Campus Village II opened in Fall 2016
- Renovations in Washburn Hall, Joe West Hall
- Housing Feasibility Study to be initiated in Fall 2017

## Revenue Sources

- Parking permit sales and parking citation fines

## Functions

- Parking operations and enforcement costs
- Maintenance and repair to existing facilities
- Alternative transportation program

## Highlights / Accomplishments

- Parking garage cameras, security improvements underway
- Parking permits available online
- Provide Park & ride courtesy shuttle
- Updated bus fleet (2 buses in FY16/17, 1 expected FY17/18)

## Revenue Sources

- Tuition and fees from for-credit & noncredit programs

## Functions

- Extended ed. operations and program/curriculum development

## Highlights / Accomplishments

- New Programs: Master of Criminology with Concentration in Global Criminology, Masters in Nursing with Concentration in Family Nurse Practitioner, among others.
- New CIES space in the Student Union - Summer 2017
- Partnership with College of Science to build out part of new Interdisciplinary Science and Innovation Building

## Revenue Sources

- Student Success, Excellence & Technology Fee
- Expenditures reviewed by CFAC & Approved by President

## Functions

- Instructionally Related Activities
- Course Support
- Student Success

## Supported Initiatives

- Spartan Scholars Program
- SASS Programs (Task Forces)
- Academic Technology Improvements

## Revenue Sources

- Fees, program revenues, grants and contracts
- Fee changes must be approved by student referendum

## Student fees support AS programs

- Student Leadership and governance
- Child Care Center
- Campus Life
- Transportation

## Revenue Sources

- Federal and state grants and contracts, fees, investment income, and other revenues

## Restrictions

- Most funding tied to grants or specific programs

## Highlights / Accomplishments

- The Research Foundation also provides employment support to more than 1,800 individuals, including faculty, students, research affiliates, and staff.
- Program sites are located on the SJSU main campus, Moss Landing Marine Laboratories, NASA-Ames Moffett Field, and several other locations.

## Revenue Sources

- Dining, event, retail, and real estate services, commissions, interest and other income

## Division Functions

- Writing Request for Proposal to outsource operations
- Retail Services operates the Barnes & Noble Bookstore; the current contract extends through June 30, 2026
- Event Services division provides concessions and retail to Event Center Arena, Hammer Theatre, and Spartan Stadium
- Real Estate Services to SJSU faculty and staff

### Revenue Sources

- Mandatory Student Union Fee

### Functions

- Supports Student Union Operations
- Capital Construction (SU Expansion & New SRAC)

### Highlights / Accomplishments

- Student Union Spaces booked for entire year
- Construction progress on the new Student Recreation & Aquatic Center (SRAC)

## Revenue Sources

- Gifts, pledges, investment income

## Functions

- As a 501(c)(3) auxiliary organization, Tower Foundation directly manages all financial aspects of funds donated to San Jose State University
- Tower Foundation Board approves the annual endowment distribution rate (4% for FY17/18)

## Highlights / Accomplishments

- \$140+ million endowment comprised of over 600 individual funds
- Tower Foundation supporting the expansion of South Campus