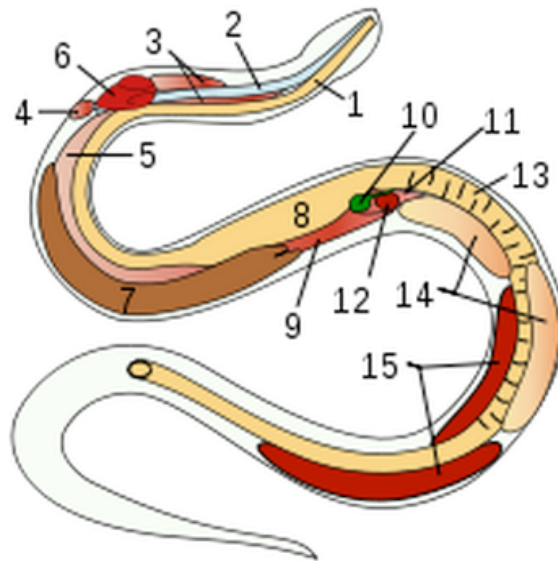
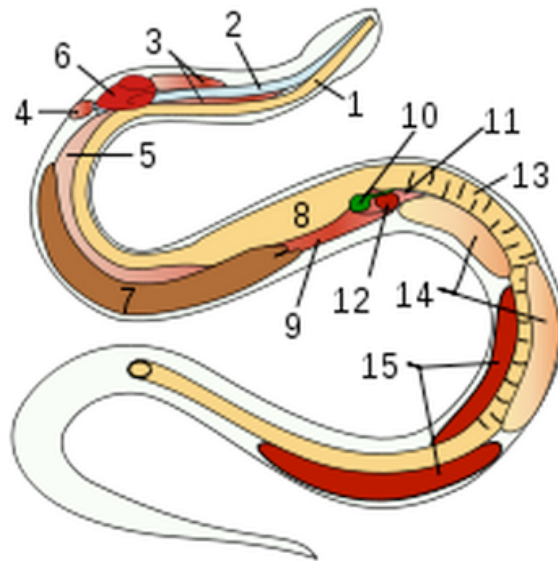


Role of Digestive Organs Worksheet



Location	Digestive Organ	Role in breaking down food
1	Esophagus	
8	Stomach	
13	Small and Large Intestines	
15	Kidneys	
7	Liver	
10	Gall Bladder	
11	Pancreas	

Role of Digestive Organs Worksheet - Answer Key



Location	Digestive Organ	Role in breaking down food
1	Esophagus	pushes food to stomach
8	Stomach	pressure from squeezing muscles and special juices start to break down the food; digestive juices in a snake's stomach are extremely powerful and almost all of the prey is digested – even the bones and teeth
13	Small and Large Intestines	more juices continue to break down the food to extract nutrients, which are absorbed through the walls of the small intestine and flow into the snake's bloodstream; water is removed in large intestine and returned to the body
15	Kidneys	filter waste from the blood and reabsorb water back into the snake's system
7	Liver	produce bile, a digestive enzyme
10	Gall Bladder	Stores bile and releases into small intestine when needed
11	Pancreas	secretes digestive enzymes into the small intestine and produces hormones that regulate blood sugar