

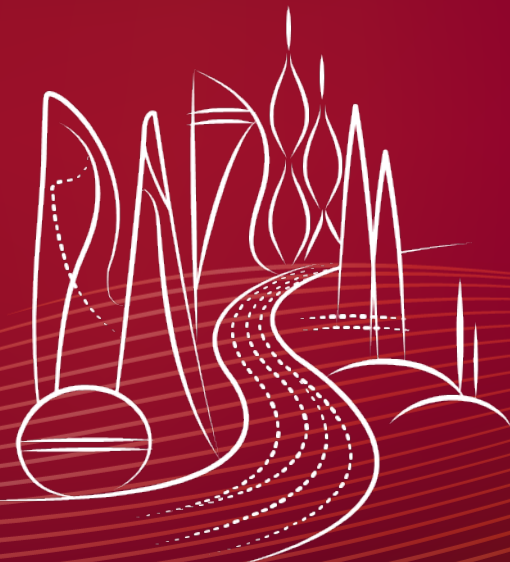
Statistical Finance Analyst - Intern

BROCADE[®]

Brocade Communications
Systems

Ivana Jovicic

San Jose, Spring 2016



Agenda

- How to find an internship?
- About Brocade
- Work in Brocade – Some of the projects I was assigned for
- Coursework
- Advice

How to find an Internship?

- LinkedIn
- Networking
- Job Fairs
- Job portals (such as : Indeed, Dice, Glassdoor...)
- Staffing agencies

About Brocade

- Technology company specialized in data and storage networking products
- Brocade was founded in August 1995
- Headquarters in San Jose
- Portfolios : **Storage Area Network (SAN)** and **Local Area Network (LAN)**

Work in Brocade – Projects I am working on

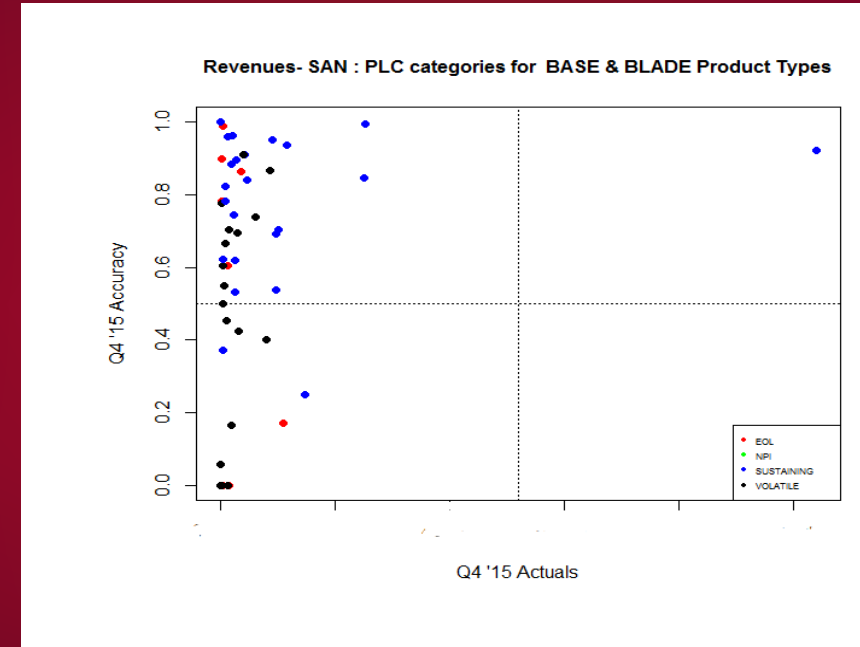
- Assisting on quarterly forecasting products' revenue/units on different company levels
- Data cleaning
- Exploratory Data Analysis
- Predictive Analysis (Linear Regression, Time Series forecasting, Classification trees)

Work in Brocade – Exploratory Data Analysis

- Summarizing and visualization the important characteristics of the data set
- Taking corrective actions
- Graphical techniques used to present efficiency of statistical methods in forecasting revenues/units for a specific categories of Product Types that products belong

Revenues vs Forecast Accuracy Q4 2015

Visualization of efficiency of statistical techniques in forecasting revenues of the specific subsets of products regarding the four PLC categories those products belongs.



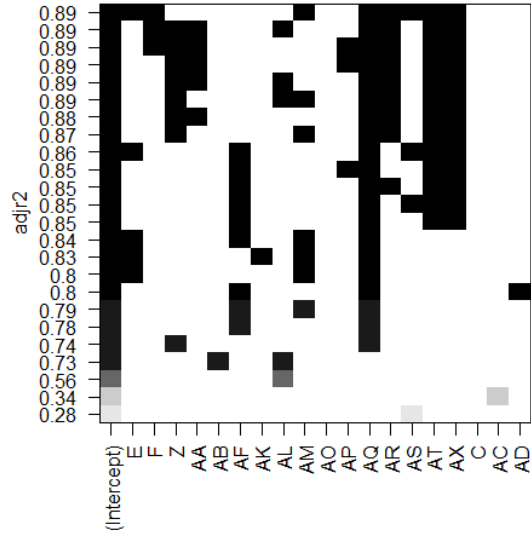
Work in Brocade – PLC classification (ongoing project)

- Decision Tree algorithm to classify product lines in four categories (using rpart and C50 packages in R) :
- 1. SUSTAINING
- 2. VOLATILE
- 3. EOL (end of life)
- 4. NPI (new product lines)

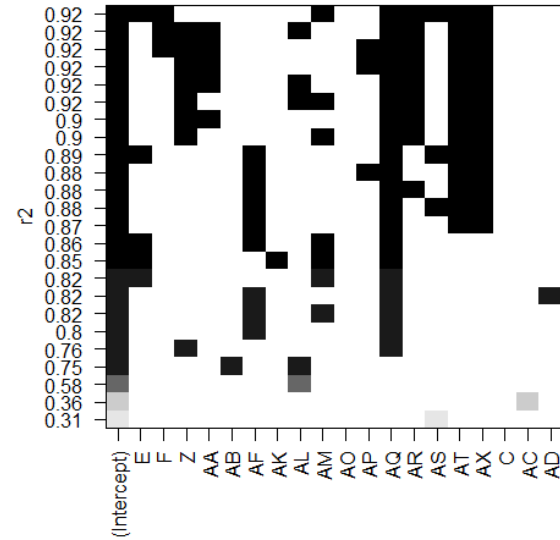
Work in Brocade – Linear regression and model selections

- Revenue of SAN vs numerous predictors
- Variable selection : (packages in R : MASS and leaps)
- Stepwise Procedures
- Criterion-based procedures (AIC, BIC, Adjusted R- squared, Mallows's Cp Statistic)

Best models based on Adj.R- squared



Best model based on R- squared



Coursework

- MATH261A : Regression Theory and Methods
- MATH285 : Multivariate Data Analysis
- MATH 267: Computational Statistics
- MATH 265: Time Series

Advice:

- Be assertive - do not hesitate to contact people directly
- Be active on LinkedIn
- Be patient- sometimes it takes time
- Be confident

Contact that can be of a great help:

- Sarah Lucas – SearchPros Global Program Director
sarah@spstaffing.com

Best of luck in your
job / internship hunting!

Thank You